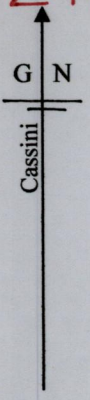


3982-10

1548

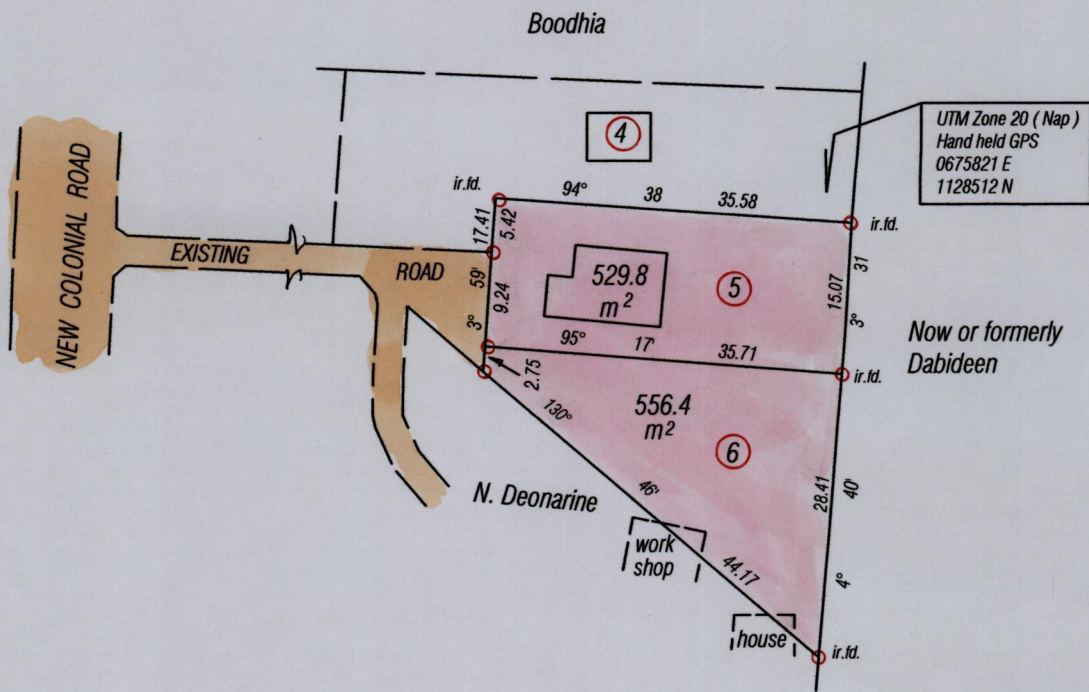
212

Cadastral Sheet G 9 M  $\frac{64 A}{37 d}$   
County of Victoria  
Ward of Naparima



Process ID# 52027

Bk. 1036 Fol. 22



Bearings are Cassini Grid based on Solar Obs.

○ Denotes iron put except otherwise stated  
add

SCALE 1 / 750  
Distances are in Metres

Note: To obtain compass bearing subtract minutes  
PLAN of 2 Parcels of land coloured pink in the Ward of Naparima  
Containing one thousand and eighty six point two square metres  
Surveyed by me, with due authority, in March 2012 For S. Ramsoomair & Ors.  
In accordance with Regulation 25 (1) of the Land Surveyors' Regulations 1998, I certify  
that this plan is correct

Checked by.....  
Entered on.....

*Winston Ramcharan*  
Trinidad & Tobago Land Surveyor... 23rd March 2012

