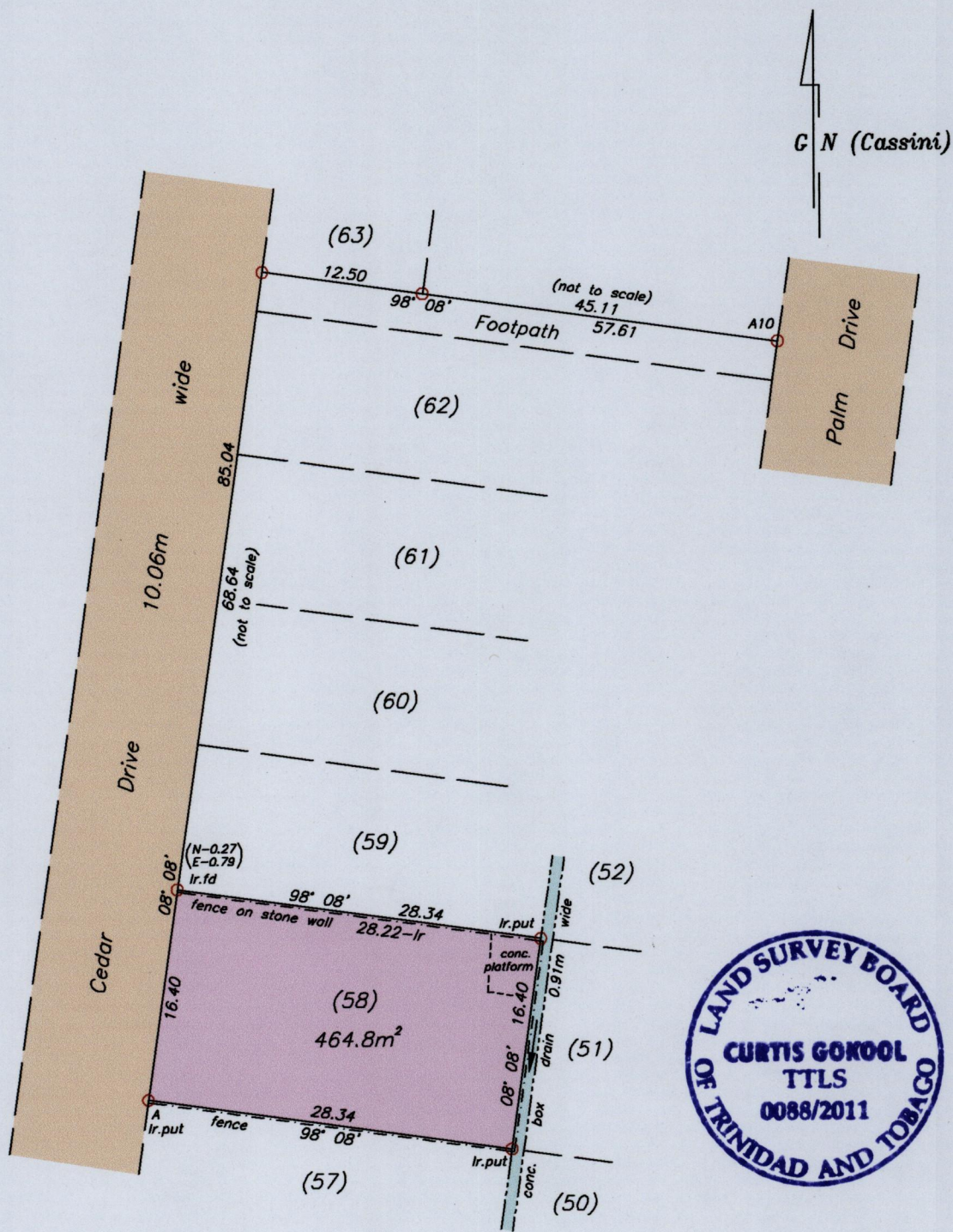


Process ~~SD~~# 42733

Cadastral Sheet $\frac{53E}{4/b}$ (G.3.M)
Ward of Naparima
County of Victoria

Registered Deed # 201002155894



A = N 1134820 (U.T.M)
E 668114

Notes: U.T.M 20 Naparima (GPS +/- 3.0m)

- Denotes Iron found unless otherwise stated
- Bearings are Cassini Grid based on solar observations

Reference
Plan C.J.91

SCALE 1:500
Distances are in METRES

PLAN of a Parcel of land coloured pink in the Ward of Naparima.
Containing four hundred and sixty-four point eight square metres.
Surveyed by me, with due authority, in August 2011 at the request of Roma Jaggernaut.
In accordance with Regulation 25 (1) of the Land Surveyors' Regulations 1998,
I certify that this plan is correct.

Entered on..... Curtis Gokool.....
Trinidad and Tobago Land Surveyor..... August 16.....2011

