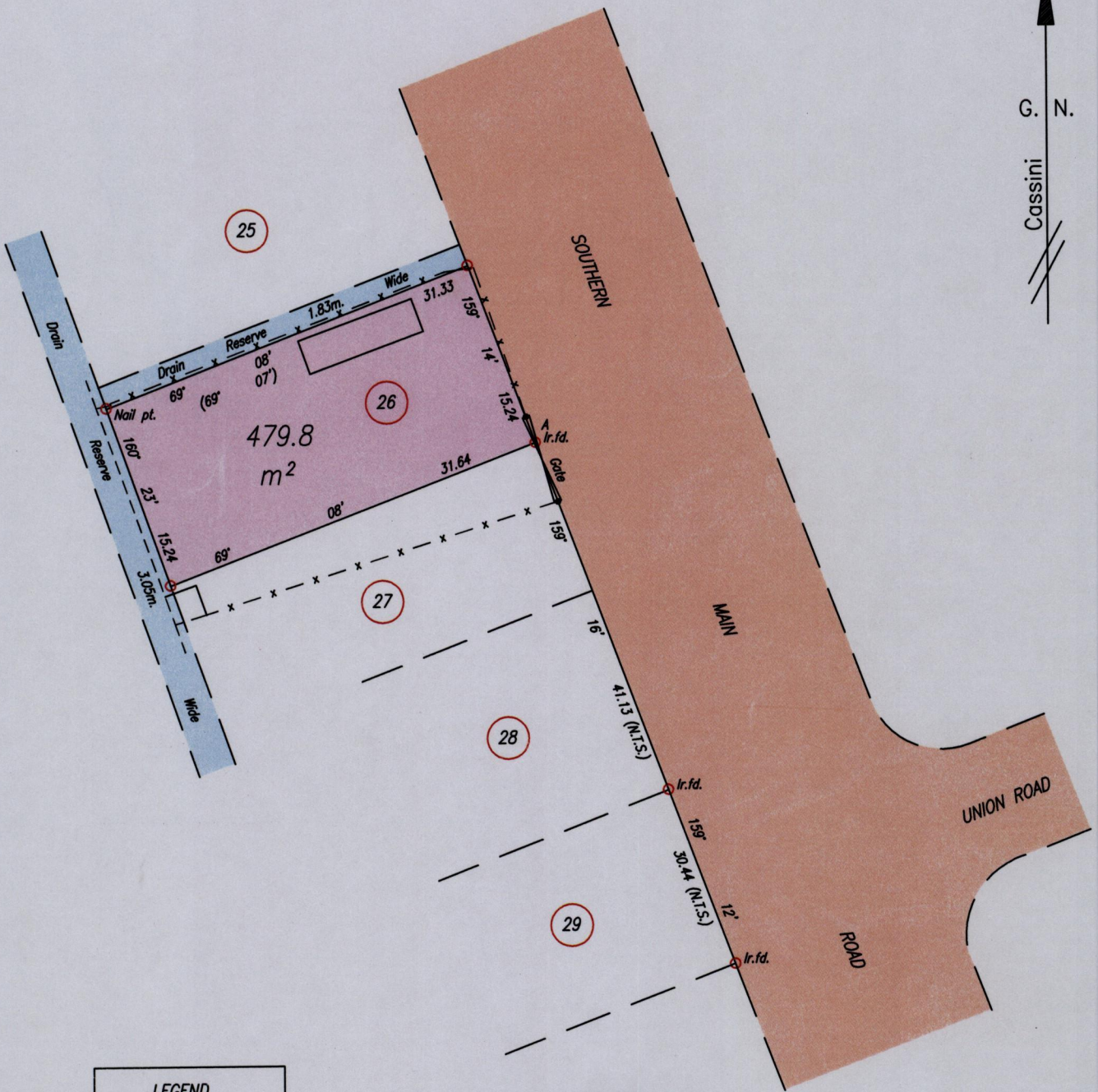
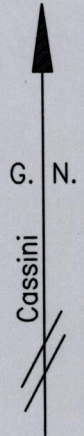


15483

2015

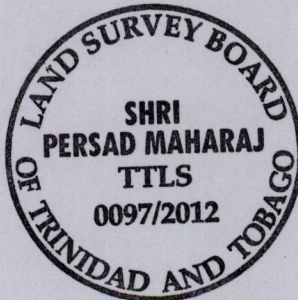
Process ID# 50633

Cadastral Sheet G.3.J 53C
Ward of Naparima 3/c
County of Victoria



LEGEND	
-----	Wall
- x - x -	Fence

Point "A" = N 1139328, E 669462
Coordinates obtained by Hand Held GPS.
U.T.M. 20, NAPARIMA (+/-5.0m.)



Reference
Plan M.G.17
Deed #9341/1956

SCALE 1:500

Distances are in metres

○ Denotes Iron put except where otherwise stated
Bearings are based on Solar Observations
PLAN of a Parcel of land coloured pink in the Ward of Naparima
Containing four hundred and seventy nine point eight square metres
Redefined by me, with due authority, in February 2012 for Rahamut Motor Supplies Limited
In accordance with Regulation 25 (1) of the Land Surveyors' Regulations 1998,
I certify that this plan is correct.

Checked by *Shri Persad Maharaj*

Entered on Trinidad & Tobago Land Surveyor. 24th February 2012.

