

Process ID# 49533

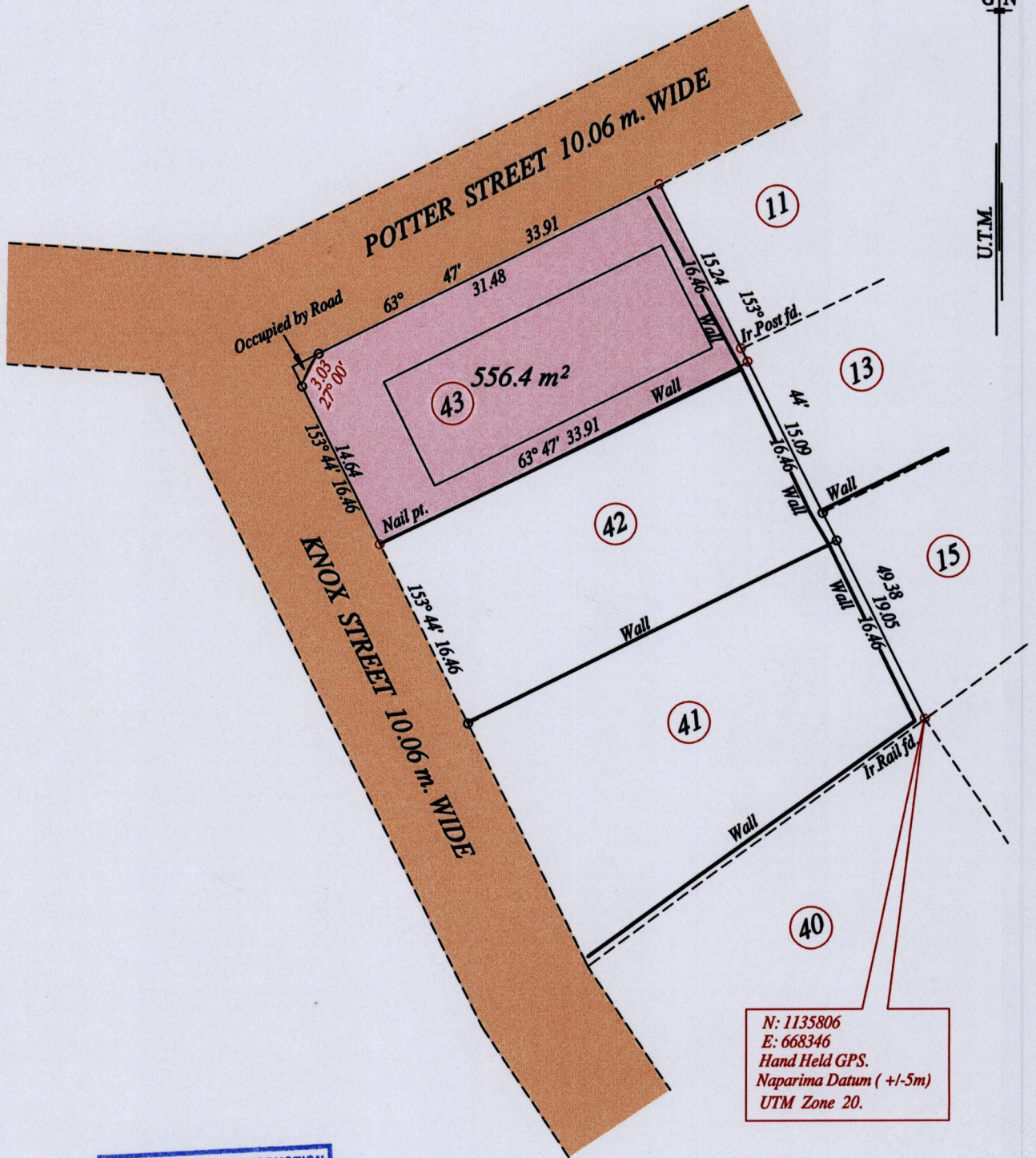
1548 City of San Fernando
County of Victoria
Cadastral Sheet G 3 I,

195

53 E
4/b

G.N

U.T.M.



MINISTRY OF FOOD PRODUCTION
LAND AND MARINE AFFAIRS
FEB 24 2012
240
Lands & Surveys Division

Vide Plan attached to Deed No. 5833 of 1942

o Denotes Iron put except stated otherwise.

SCALE : 1:500

Note: Bearings are U.T.M. grid based on solar observations

Distances are in metres

PLAN of a Parcel of land coloured pink in the City of San Fernando

Containing five hundred and fifty six point four square metres

Surveyed by me, with due authority, in February 2012

In accordance with Regulation 25 (1) of the Land Surveyors' Regulations 1998,

I certify that this plan is correct.

Checked by

Entered on

Trinidad & Tobago Land Surveyor 23rd February 2012

