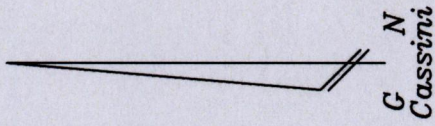


Registered Deed 197100306077

Cadastral Sheet G.3.F  
City of San Fernando  
County of Victoria

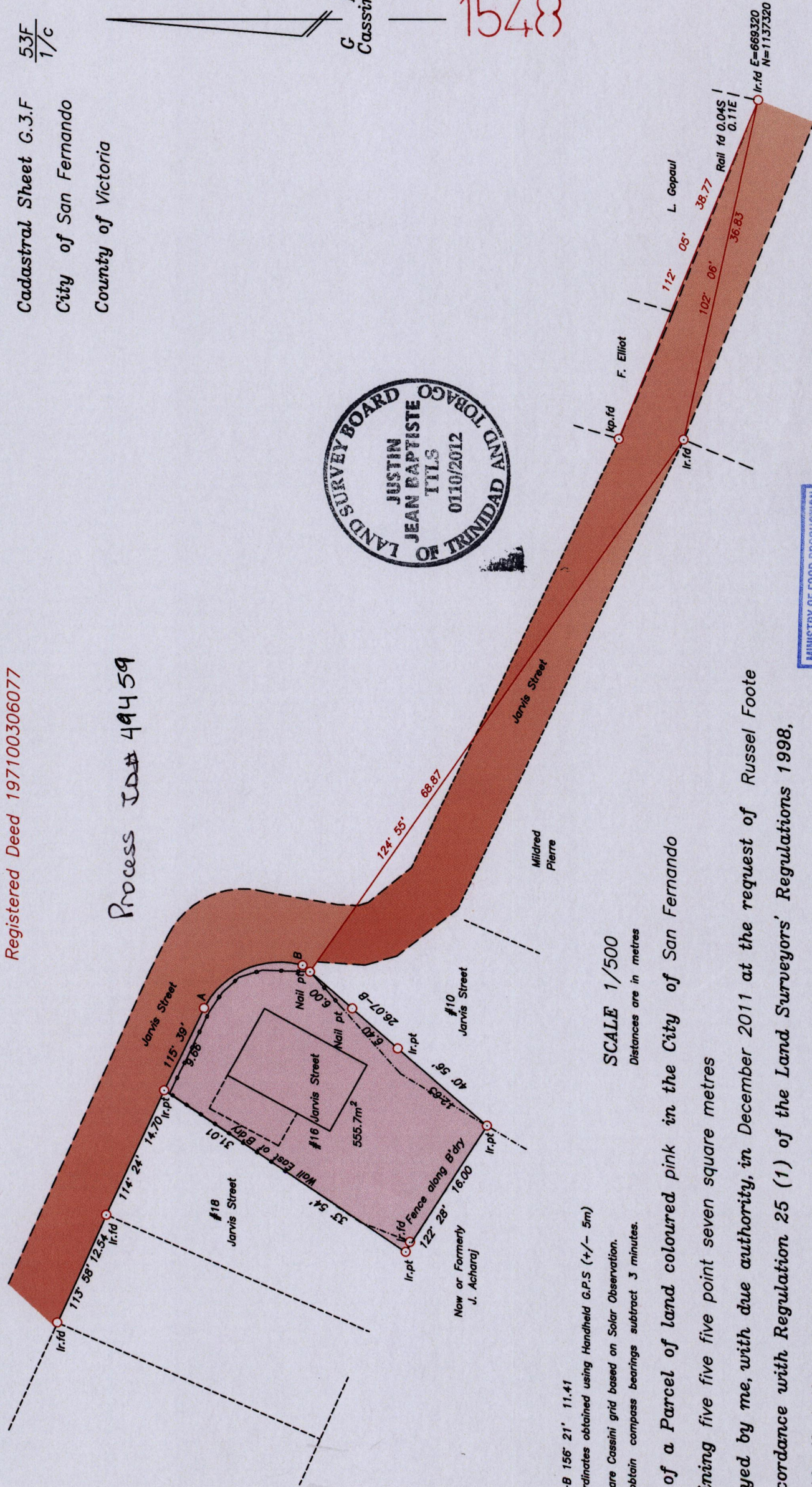
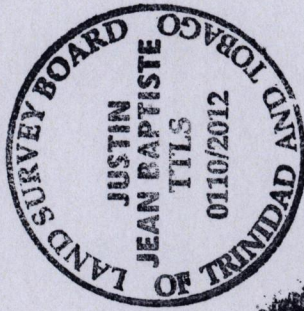
53F  
1/c

Process ID# 49459



15488

194



A-B 156° 21' 11.41

UTM.Co-ordinates obtained using Handheld G.P.S (+/- 5m)

Bearings are Cassini grid based on Solar Observation.

Note: To obtain compass bearings subtract 3 minutes.

SCALE 1/500

Distances are in metres

PLAN of a Parcel of land coloured pink in the City of San Fernando

Containing five five five point seven square metres

Surveyed by me, with due authority, in December 2011 at the request of Russel Foote

In accordance with Regulation 25 (1) of the Land Surveyors' Regulations 1998,

I certify that this plan is correct.

Checked by.....

Entered..... Trinidad & Tobago Land Surveyor..... 17th February 2012

Justin Baptiste