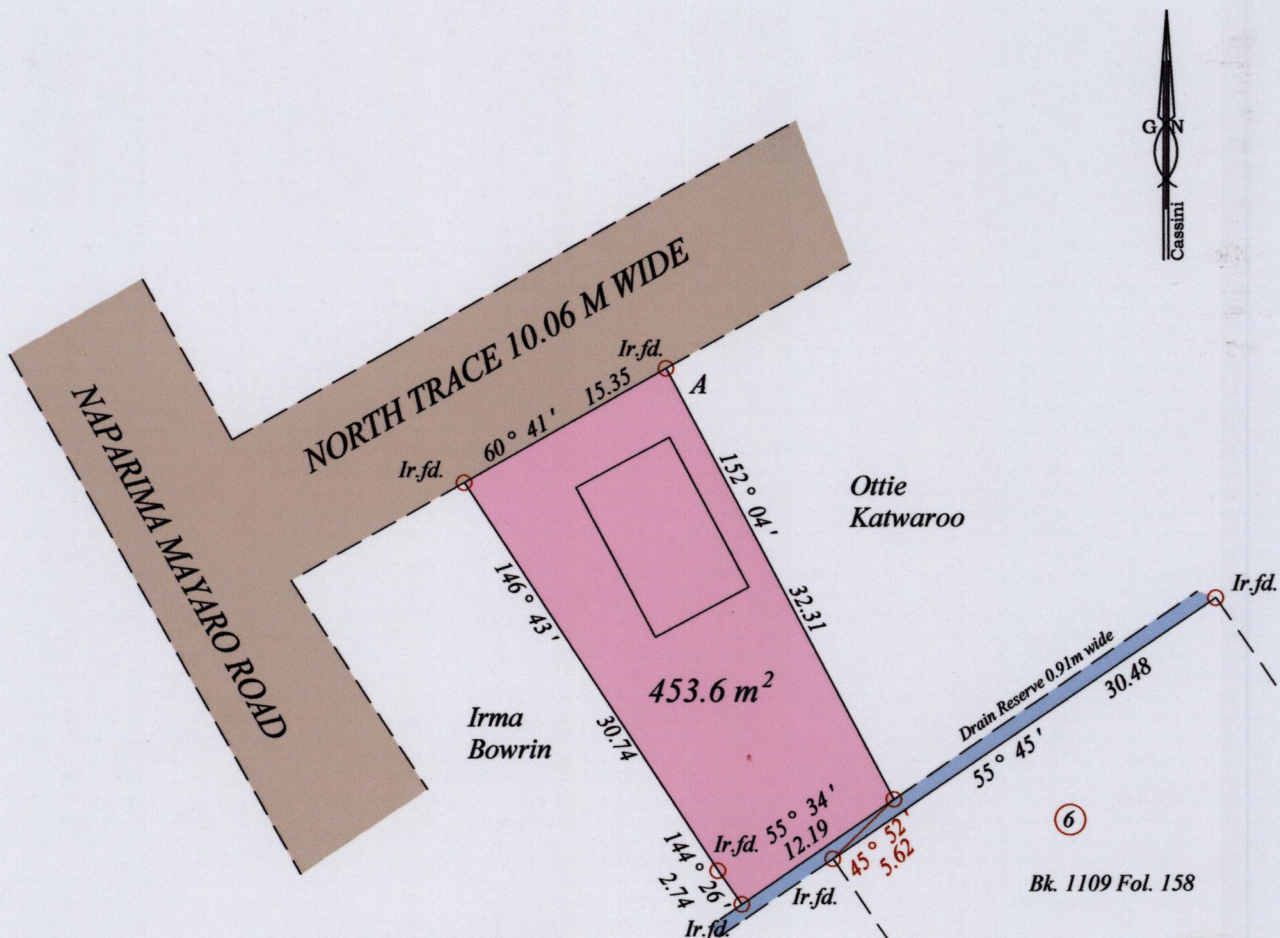


1548

19

Process ID# 42548

County of Victoria  
Ward of Ortoire  
Cadastral Sheet G.5.K., 54F  
1/c



Coordinates are in WGS84, UTM Zone 20 +/- 5m  
At. A- 685686 mE, 1136777 mN

Bearings are Cassini Grid based on solar observations  
○ Denotes Iron put unless otherwise stated

SCALE : 1:500  
Distances are in metres

Plan of a parcel of land coloured PINK in the Ward of Ortoire  
Containing Four hundred and fifty three point six square metres  
Surveyed by me, with due authority, in August 2011 for Mohan Sadal  
In accordance with Regulation 25(1) of the Land Surveyors' Regulations 1998,  
I certify that this plan is correct.

Checked by .....

*Kelvin Ramdass* 12/08/2011  
Trinidad and Tobago Land Surveyor

Entered on .....

