

Process ID# 49958

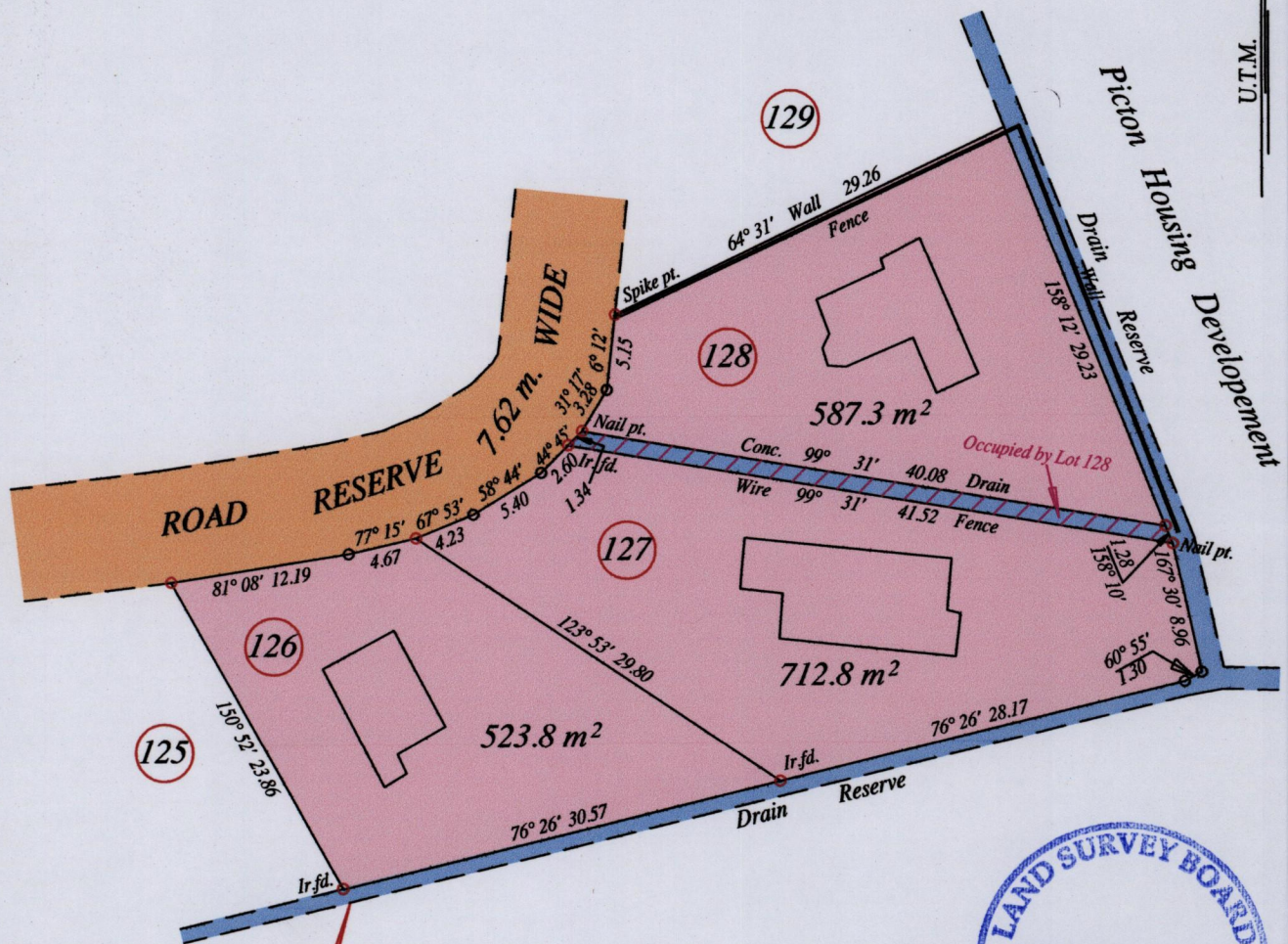
1548 Ward of Naparima

County of Victoria

Cadastral Sheet (G 8 B) 63 C
1/b

1888

G N
U.T.M.



N: 1131368
 E: 670809
 Hand Held GPS.
 Naparima Datum (+/-5m)
 UTM Zone 20.

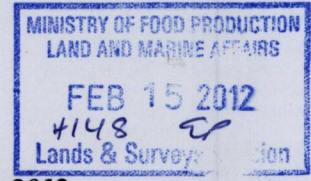


- Denotes no mark put.
- Denotes Iron put except stated otherwise.

SCALE : 1:500

Note: Bearings are U.T.M. grid based on solar observations Distances are in metres
 PLAN of 3 Parcels of land coloured pink in the Ward of Naparima
 Containing together one thousand eight hundred and twenty three point nine square metres
 Re- Defined by me, with due authority, in February 2012 for the Sugar Industry Labour Welfare Committee
 In accordance with Regulation 25 (1) of the Land Surveyors' Regulations 1998,
 I certify that this plan is correct.

Winston Ramcharan



Entered on Trinidad & Tobago Land Surveyor 14th February 2012