

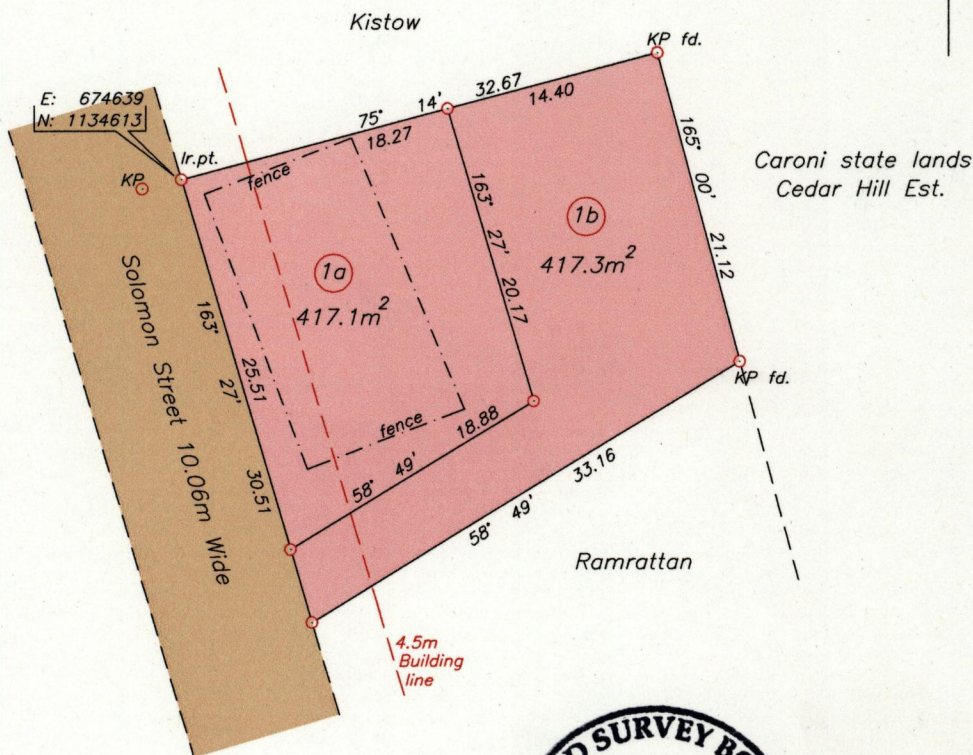
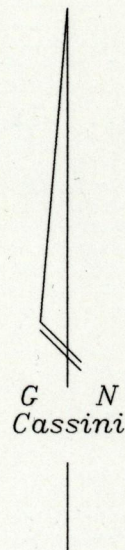
Registered Deed 14951 of 1972

Cadastral Sheet G.4.M  $\frac{54D}{3/a}$

Ward of Naparima

County of Victoria

Process ID# 49180

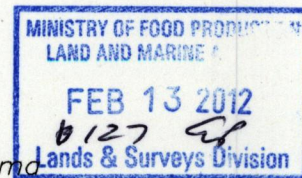


KP - Ir.pt. 2.67 76° 48'

○ Denotes Ir.pt. except stated otherwise  
 Co-ordinates are UTM zone 20N Naparima Datum +/-5m scaled from L.&S. 1/10000 sheet.  
 Bearings are Cassini grid based on solar observations  
 Note: To obtain compass bearings add 0 minutes.

SCALE 1:500

Distances are in metres



PLAN of 2 Parcels of land coloured pink in the Ward of Naparima  
 Containing together eight three four point four square metres  
 Surveyed by me, with due authority, in February 2012 for Beharrylal Ramjattan  
 In accordance with Regulation 25 (1) of the Land Surveyors' Regulations 1998,  
 I certify that this plan is correct.

Checked by.....

*Rishi Mohan Mahabir*

Entered..... Trinidad & Tobago Land Surveyor  $\frac{13}{th}$  February 2012