

Process J^o# 48945

1548

1832

U.P.R.N.

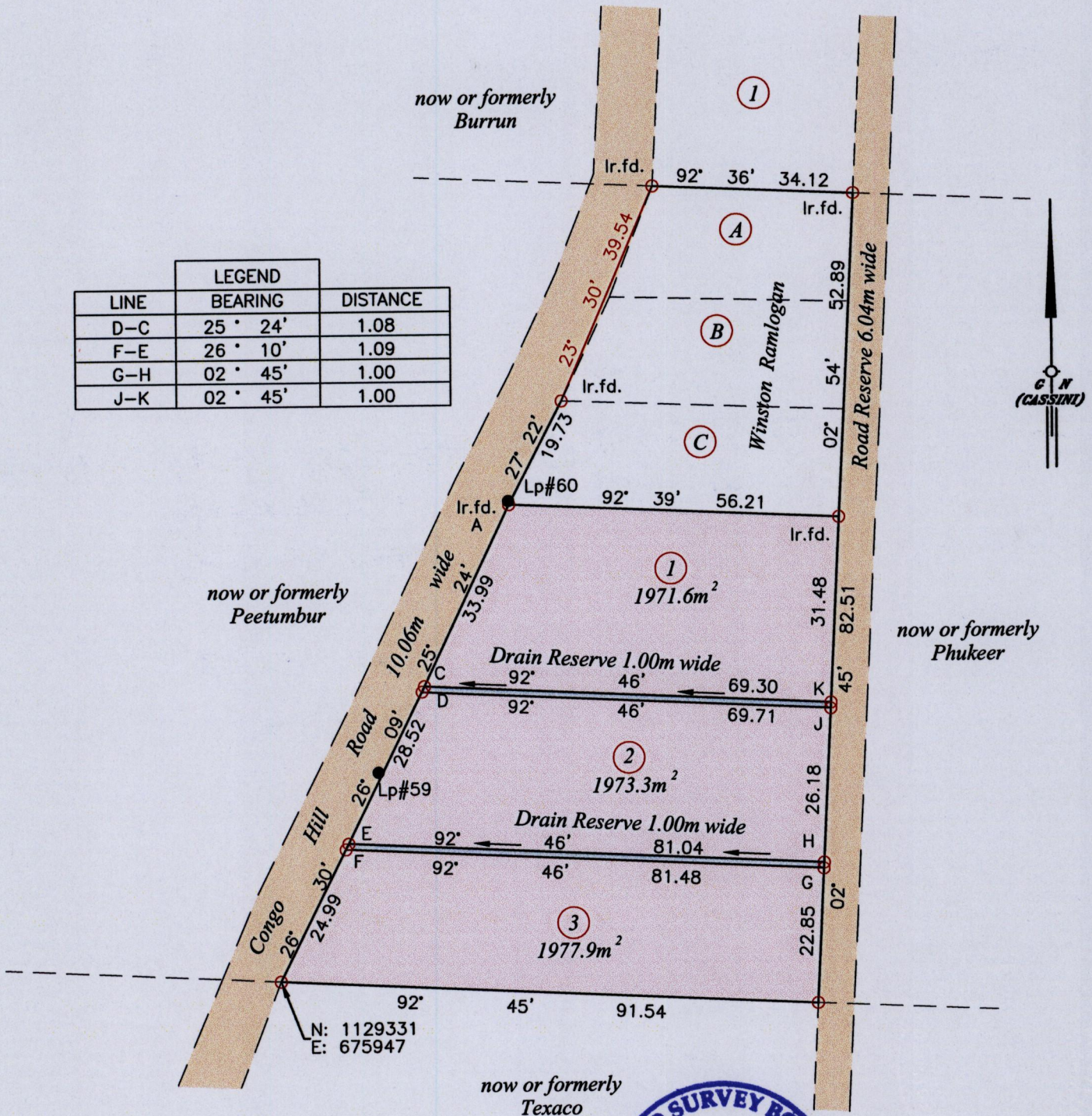
Ward of Naparima

County of Victoria

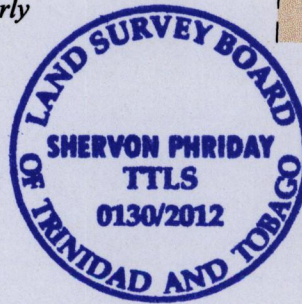
Deed No. - DE200402296500

Cadastral Sheet (G.9.J.) $\frac{64A}{3/b}$

LEGEND		
LINE	BEARING	DISTANCE
D-C	25° 24'	1.08
F-E	26° 10'	1.09
G-H	02° 45'	1.00
J-K	02° 45'	1.00



Coordinate was obtained by Hand Held GPS.
 Naparima Datum (+/-5m)
 UTM Zone 20



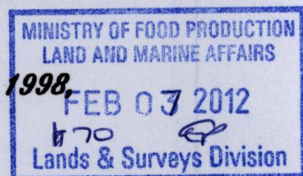
Vide Plan L.C. 12
 Vide Plan A.E. 71

SCALE 1:1000

Distances are in metres

○ Denotes Iron put except stated otherwise.
 Bearings are Cassini Grid based on Solar Observations
 Plan of three (3) Parcels of land coloured pink in the Ward of Naparima.
 Containing together five thousand nine hundred and twenty two point eight square metres.
 Surveyed by me, with due authority, in February 2012, at the request of Kert & Rita Gobin,
 Wesley & Wendy Mohan and Murti Wilfred Mohan.

In accordance with Regulation 25 (1) of the Land Surveyors' Regulations 1998
 I certify that this plan is correct.



Checked by.....

.....
Shervon Phriday

Entered on Trinidad & Tobago Land Surveyor.....*6th February*.....2012