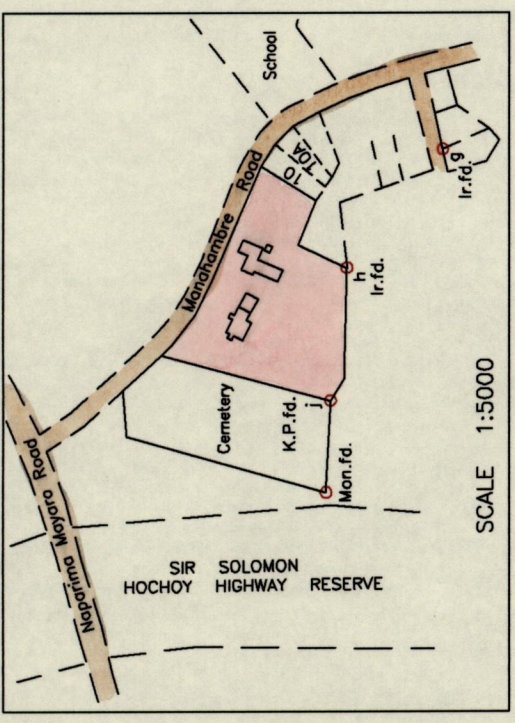


1548

174

Location Diagram



Process ID # 48178

From	To	Bearing	Distance
a	b	135° 18'	9.84
h	g	128° 45'	101.67
j	h	96° 59'	89.60
Mon.f.d.	j	93° 00'	61.17

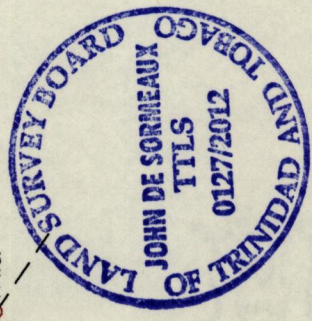
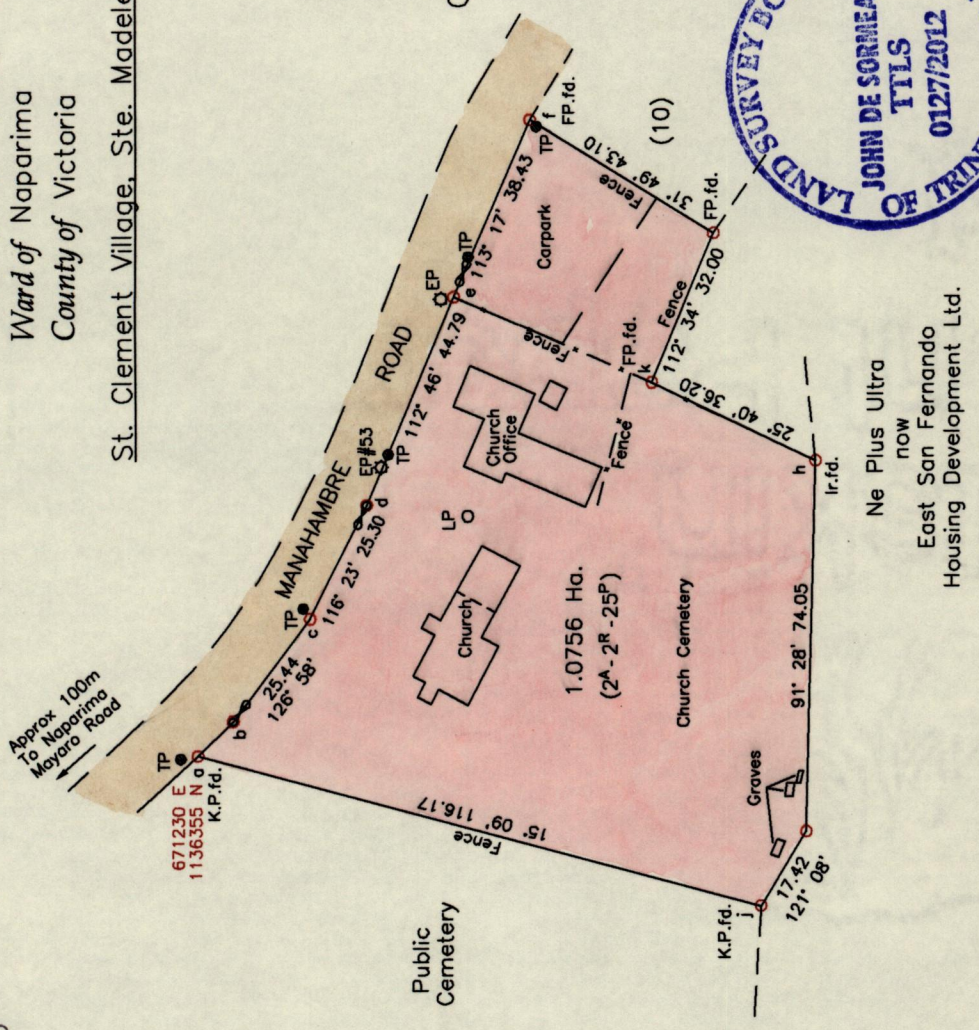
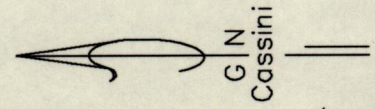
Legend

- Electricity Pole ○ EP
- Telephone Pole ● TP
- Lightpole ○ LP
- Gate ○

References:  
 Bk.995 Fol.189  
 Bk.955 Fol.150  
 Bk.1182 Fol.121  
 1994 Digital Mapping

53F  
 Cadastral Sheet 1/d (G.3.)  
 Ward of Naparima  
 County of Victoria

St. Clement Village, Ste. Madeleine



Ne Plus Ultra  
 now  
 East San Fernando  
 Housing Development Ltd.

SCALE 1:1500  
 Distances are in METRES



Notes: ○ Denotes Boundary Corner unless otherwise indicated  
 a-b-c-d-e-f = Fence Along Boundary  
 Line j-h-k from previous survey by Winston Ramcharan in 2010  
 Bearings are Cassini Grid based on Solar Observations  
 Coordinates obtained using handheld GPS (UTM Zone 20, Naparima ± 5.0m)

PLAN of a parcel of land coloured pink in the Ward of Naparima  
 Containing one point zero seven five six hectares  
 Surveyed by me, with due authority, in August 2011 at the request of the St. Clement Anglican Church  
 In accordance with Regulation 25(1) of the Land Surveyors Regulations' 1998,  
 I certify that this plan is correct

Checked by .....  
 Entered on .....  
 ...*John de Sormeaux*...  
 Trinidad and Tobago Land Surveyor, 12 January 2012