

Process IDA 48258

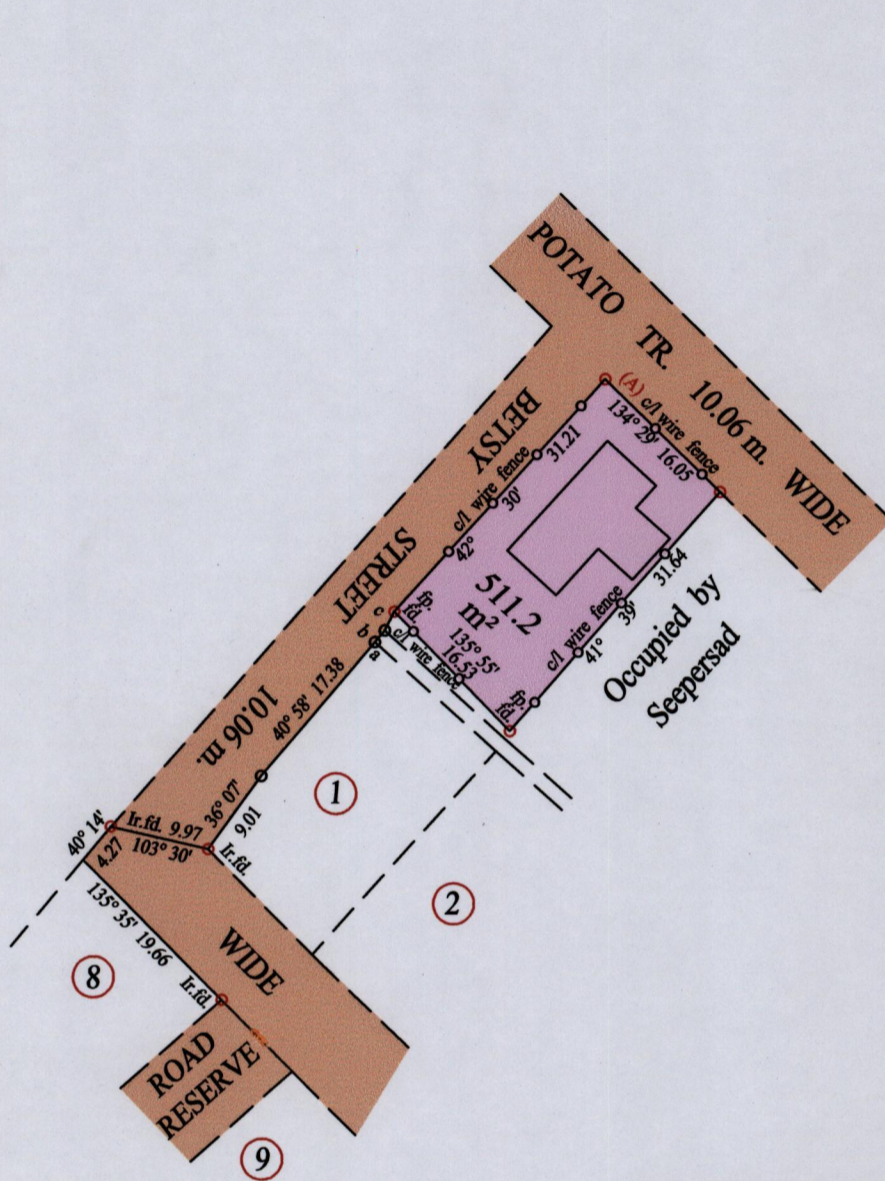
1548

172

Ward of Naparima

County of Victoria

Cadastral Sheet G.7.C 63.B.  
1/b



a - b	40° 58'	1.52
b - c	26° 46'	2.09

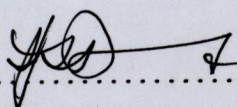
At Station (A)
E 0665470
N 1133156
Reading taken with
Handheld G.P.S.
U.T.M. Zone 20
Naparima
± 5 m.

- Denotes no marks
- Denotes Iron put except stated otherwise.

SCALE : 1:750

Note: Bearings are cassini grid based on solar observations Distances are in metres

PLAN of a Parcel of land coloured pink in the Ward of Naparima  
 Containing five hundred and eleven point two square metres  
 Surveyed by me, with due authority, in January 2012 at the request of Mr. Gopeesingh  
 In accordance with Regulation 25 (1) of the Land Surveyors' Regulations 1998,  
 I certify that this plan is correct.

Checked by .....  .....

Entered on ..... Trinidad & Tobago Land Surveyor ..... 13. 01 ..... 2012

