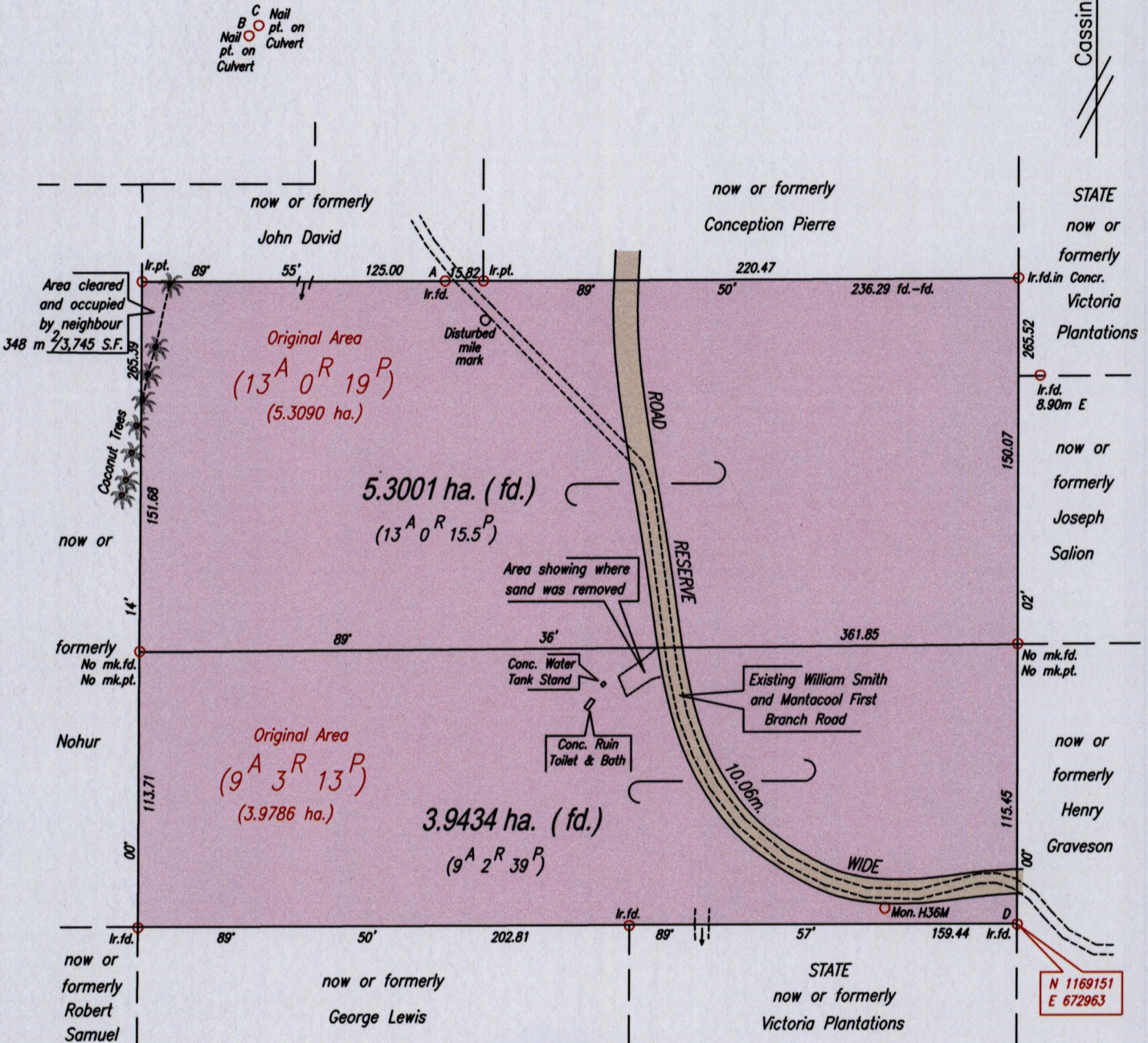
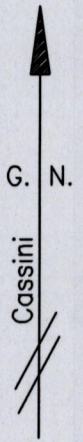


TABLELAND

Vide : Bk.322 Fol.29
Bk.322 Fol.40



Coordinates obtained by Hand Held GPS
U.T.M. Naparima +/- 5m

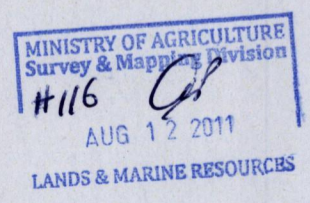


LEGEND

A - B	321° 07'	129.57
B - C	43° 44'	5.85
A - mile mark	133° 53'	23.18
D - Mon.H36M	277° 03'	54.60

SCALE 1:2500
Distances are in metres

Bearings are based on solar Observations
PLAN of 2 Parcels of land coloured pink in the Ward of Ortoire
Containing together nine point two four three five hectares
Surveyed by me, with due authority, in June & July 2011 for Dr. Aleem Mohammed.
In accordance with Regulation 25 (1) of The Land Surveyors Regulations 1998,
I certify that this plan is correct.



Bhaghirathi Maharaj

Entered on. Trinidad & Tobago Land Surveyor. 30th July, 2011.