

Process ID# 48037

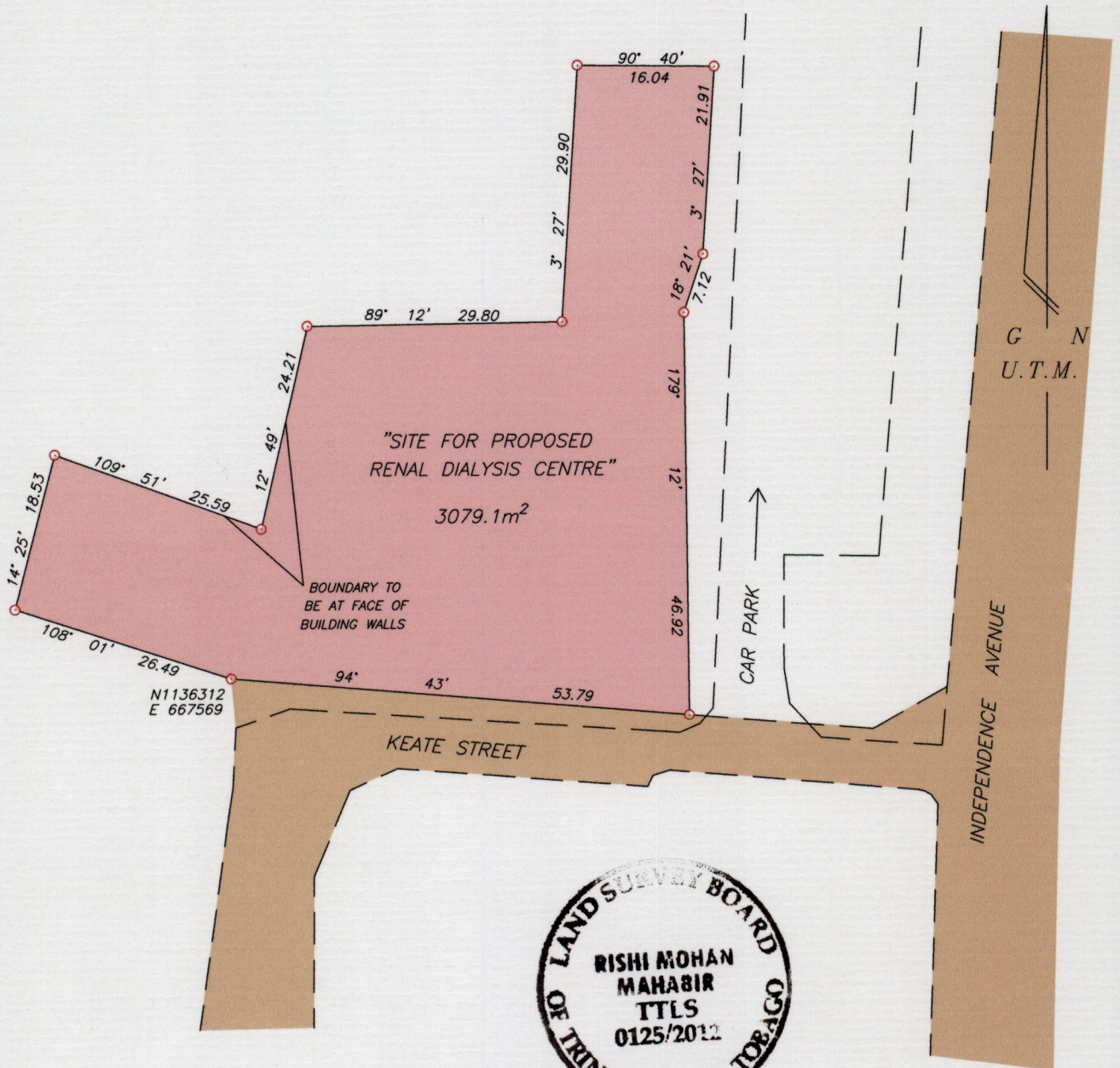
1548

169

Cadastral Sheet G.3.1 53E
2/d

Ward of Naparima

County of Victoria



○ Denotes Iron put unless otherwise stated

Co-ordinates are UTM zone 20N Naparima Datum +/-5m scaled from a 1/10000 ward sheet

Bearings are U.T.M. grid based on solar observations

SCALE 1/1000

Distances are in metres

PLAN of a Parcel of land coloured pink in the Ward of Naparima
Containing three thousand and seventy nine point one square metres
Prepared by me, with due authority, in January 2012 from a survey done by
Mr. Lawrence Clarke in November 2010 for Comprehensive Nephrology Services Limited,
Signed 19th November 2010.

In accordance with Regulation 25 (1) of the Land Surveyors' Regulations 1998,
I certify that this plan is correct.

Checked by.....

Rishi M. Mahabir

Entered..... Trinidad & Tobago Land Surveyor... 18th January 2012.....

MINISTRY OF FOOD PRODUCTION
LAND AND MARINE AFFAIRS
JAN 18 2012
#107 ER
Lands & Surveys Division