

1548

168

Process ID# 47983

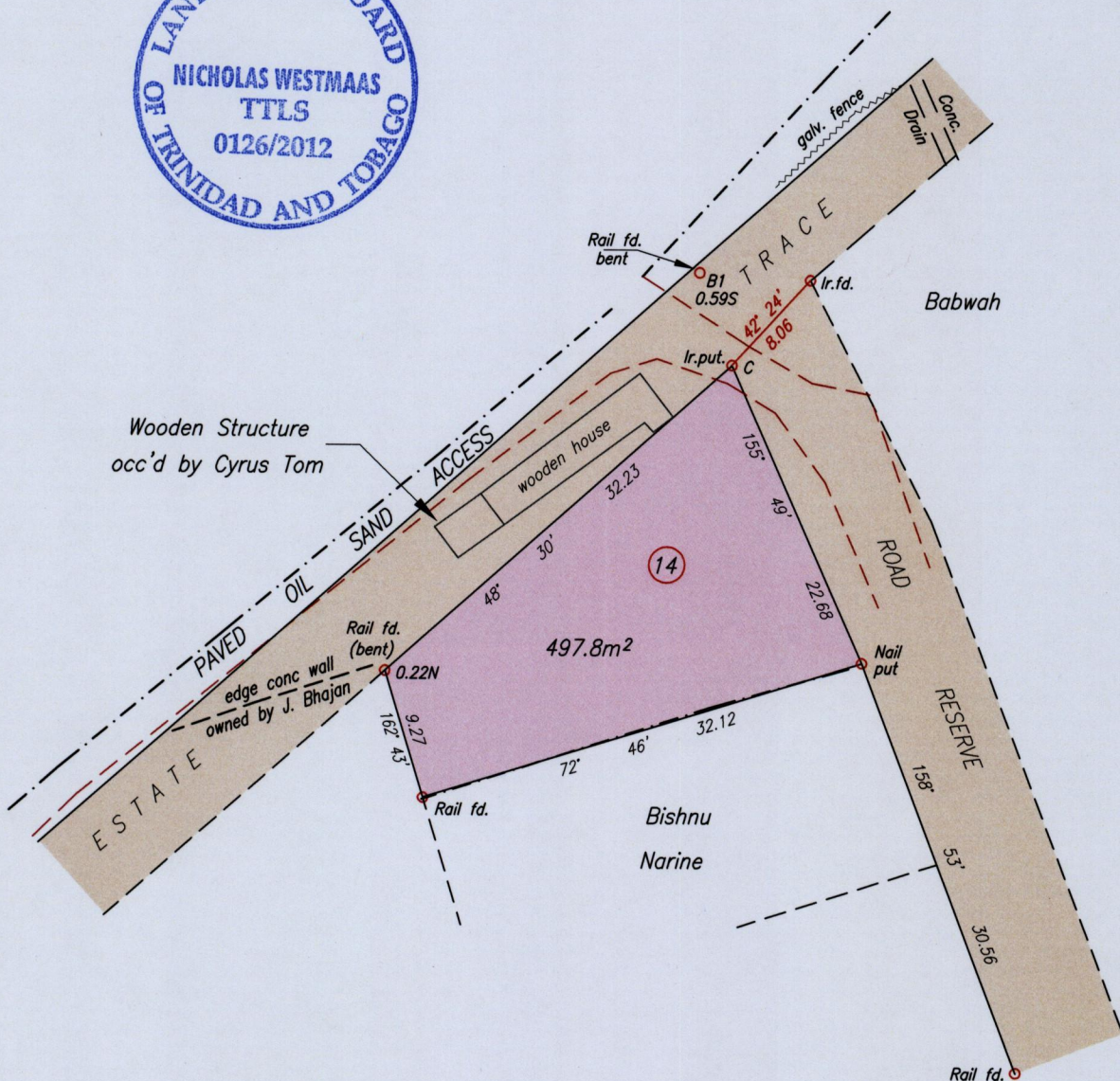
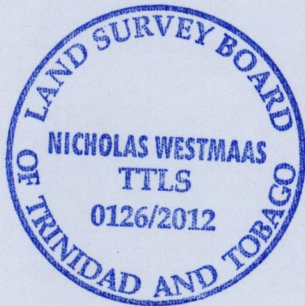
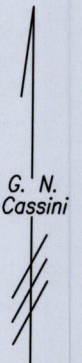
Ref. PLAN AK 26

R.D. 13483/1998

Cadastral Sheet G.8.E. 63B

Ward of Naparima

County of Victoria



- Wall
- - - Wire fence
- - - Edge of Oil Sand Access

C Ir.put N 1131678 hand held G.P.S. +- 6.0m  
 E 667662 UTM proj. nap. 1955 datum

SCALE 1/500  
 Distances are in metres

Bearings are Cassini based on Solar Observations

PLAN of a parcel of land coloured pink in the Ward of Naparima  
 Containing four hundred and ninety seven point eight square metres  
 Redefined by me with due authority in December 2011 for Hamza Abdool  
 In accordance with Regulation 25 (1) of the Land Surveyors' Regulations 1998,  
 I certify that this plan is correct.

*Nicholas Westmaas*

Entered on .....

Trinidad & Tobago Land Surveyor. January.../16<sup>th</sup> 2012

