

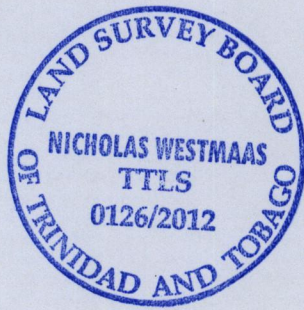
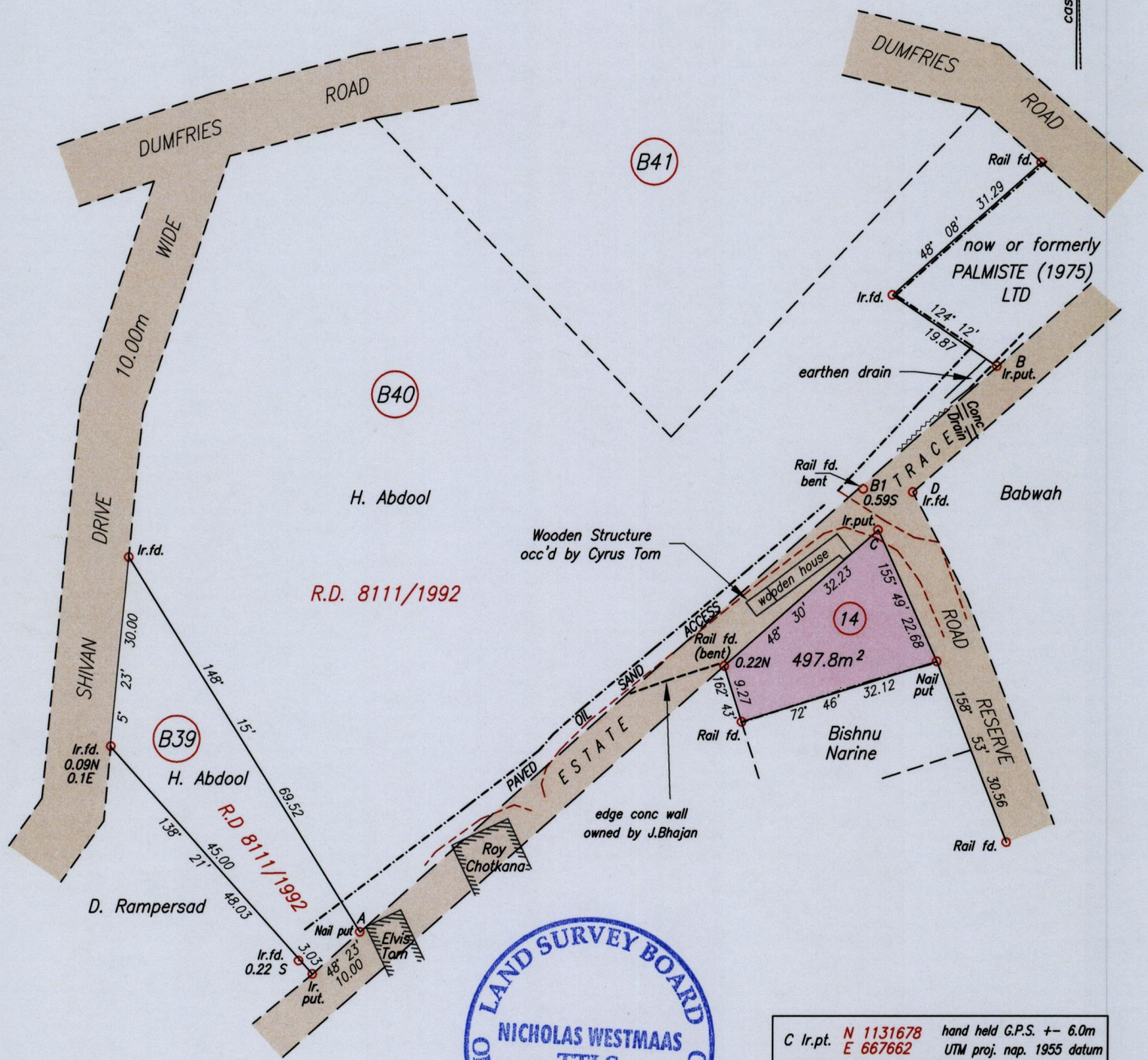
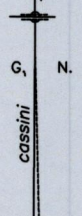
15483

167

Process ID# 47982

Cadastral Sheet G.8.E. 63B
2/d
Ward of Naparima
County of Victoria

Ref. PLAN AK 26



C Ir.pt. N 1131678 hand held G.P.S. +/- 6.0m
E 667662 UTM proj. nap. 1955 datum

Station	Bearing	Distance	Station
A	48° 23'	134.15	B
B	215° 46'	31.8	C
B1	48° 23'	28.49	B
C	42° 24'	8.06	D

SCALE 1:1000
Distances are in metres

Bearings are Cassini Grid based on Solar Observations
PLAN of the Southern Boundary line of parcels B40 and B39
Redefined by me, with due authority, in December, 2011
and showing the extent of occupation of an Paved Oil Sand Access, Fence Lines
and several Structures, at the request of Mr. Hamza Abdool
In accordance with Regulation 25 (1) of the Land Surveyors' Regulations 1998,
I certify that this plan is correct.

Nicholas Westmaas

Entered on..... MINISTRY OF FOOD PRODUCTION
LAND AND MARINE AFFAIRS
Trinidad & Tobago Land Surveyor..... *January 16th*.....2012

