

Process ID# 47980

U.P.R.N.

Reg.Deed No. 8038 of 1974

1548

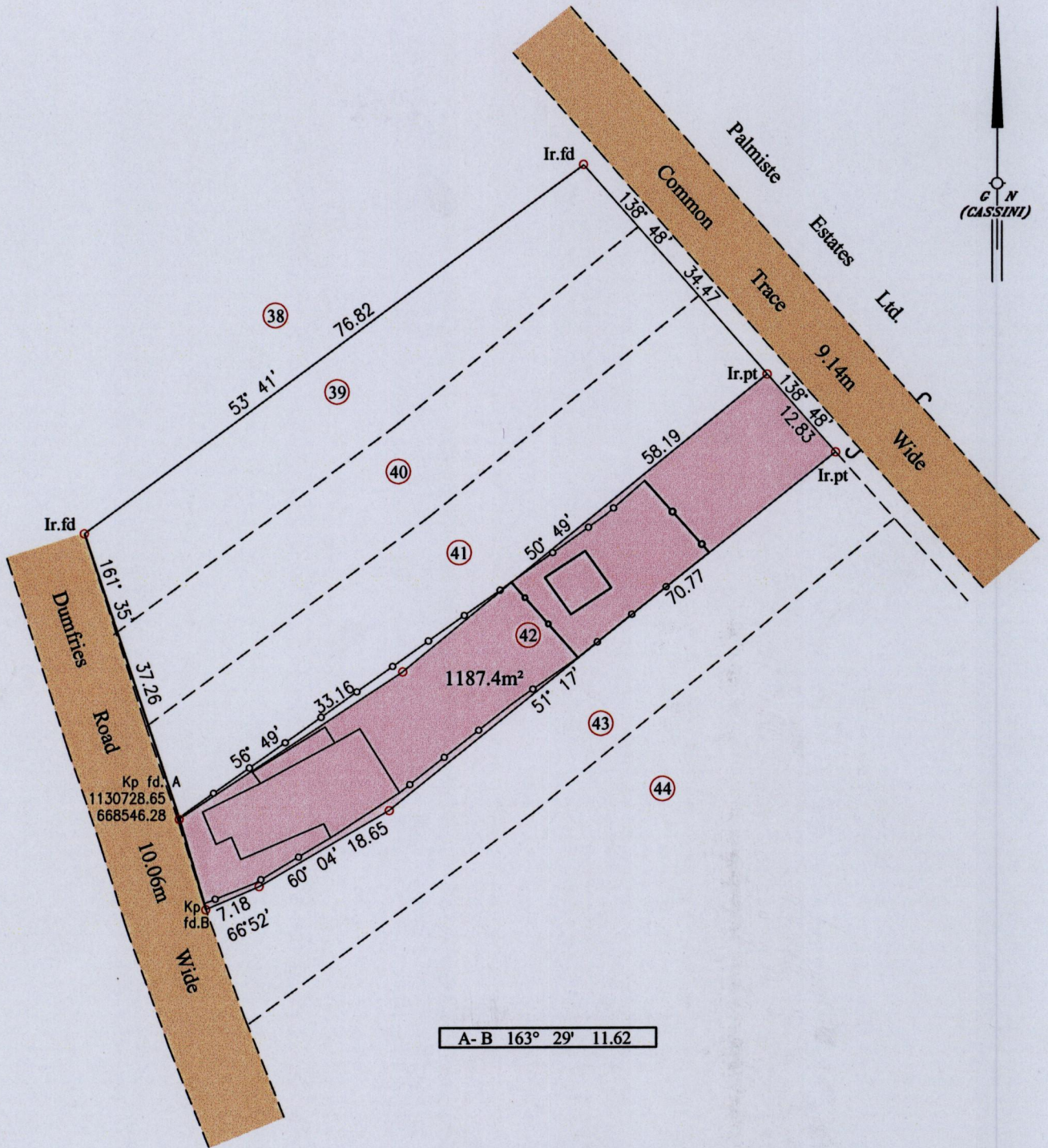
166

Ward of Naparima

County of Victoria

Cadastral Sheet (G.8.F), 63B/2/d

Hermitage Village



Coordinate was obtained from Handheld GPS.
 Naparima Datum (+/-5m)
 UTM Zone 20.



—○— Denotes existing chain link fence

○ Denotes Nail put except stated otherwise.

Bearings are Cassini Grid based on Solar Observations

Plan of a Parcel of land coloured pink in the Ward of Naparima.

Containing one thousand one hundred and eighty seven point four square metres

Surveyed by me, with due authority, in January 2012 for Richi Mattai

In accordance with Regulation 25 (1) of the Land Surveyors' Regulations 1998,

I certify that this plan is correct.

Checked by.....

Entered on

..... *Shervon Phriday*

Trinidad & Tobago Land Surveyor..... *13th January*2012

SCALE 1:750

Distances are in metres

