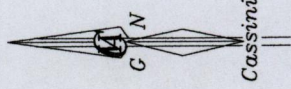


Cadastral Sheet G.3.F. 53F
1/a/2

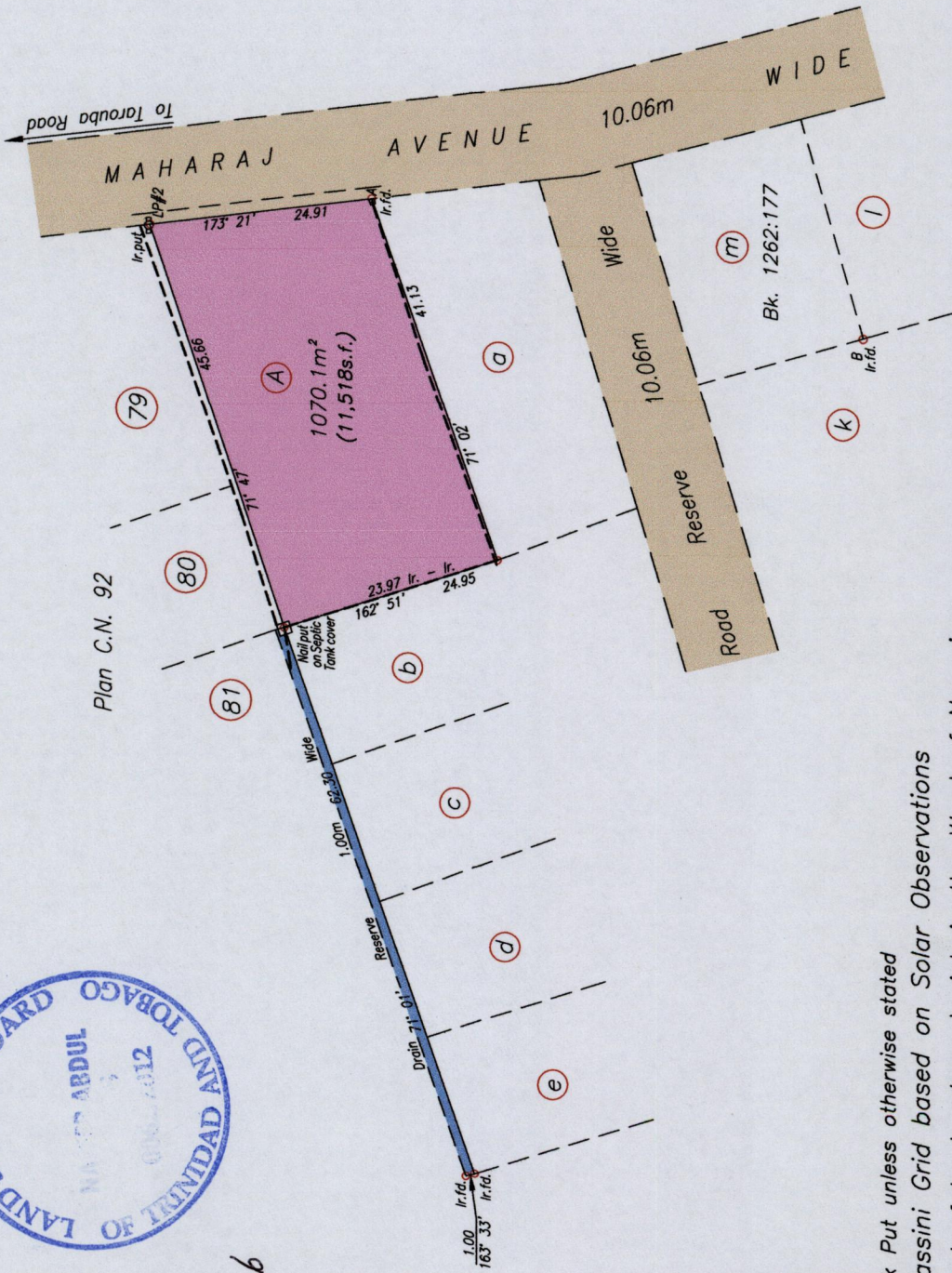
Ward of Naparima
County of Victoria

Maraj Lands, Marabella



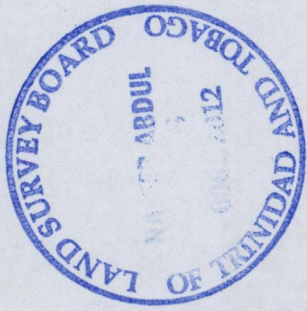
1548

162



| Station | Bearing | Distance | Station |
|---------|----------|----------|---------|
| A | 353° 37' | 24.05 | LP#2 |
| A | 196° 26' | 54.84 | B |

--- Wall
SCALE 1/750
Distances are in metres



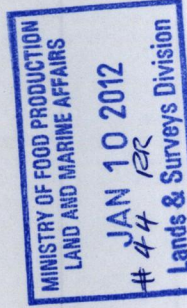
Process ID# 47926

| U.T.M. | |
|--------|----------|
| N. | 1138 571 |
| E. | 0669 715 |

Nap. Datum ± 5.0 m
Hand held G.P.S.

○ Denotes No Mark Put unless otherwise stated
Bearings are Cassini Grid based on Solar Observations
PLAN of a Parcel of land coloured pink in the Ward of Naparima
Containing one zero seven zero point one square metres
Surveyed by me, with due authority, in October 2010 for H. J. Stauble
In accordance with Regulation 25 (1) of the Land Surveyors' Regulations 1998,
I certify that this plan is correct.

.....
Staver Abdul
10.11.2011
Trinidad & Tobago Land Surveyor



Entered On.....

.....2011