

Process ID# 42523

1548

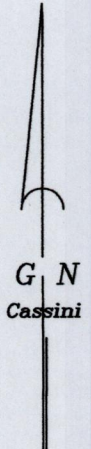
16

Cadastral Sheet G.8.E 63E
Ward of Naparima 2/b
County of Victoria

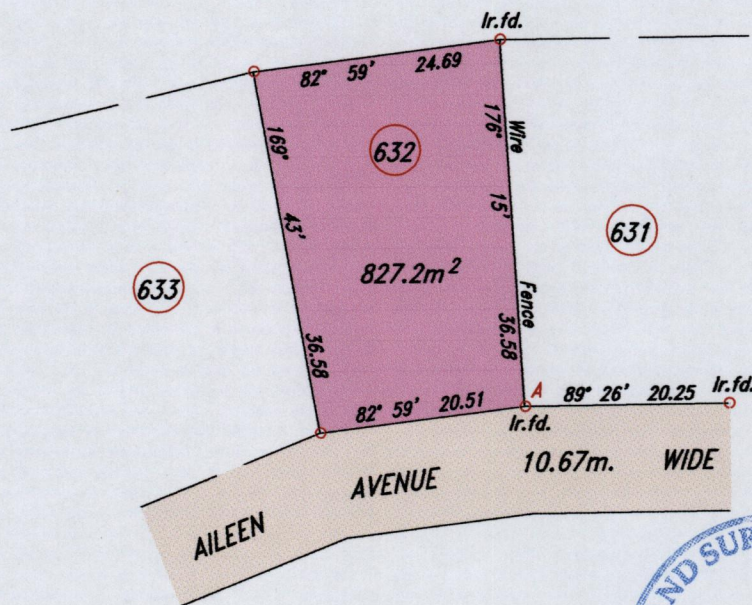
"Palmiste, San Fernando"

"Block 4"

See Plan X.E.75



Reserved
Recreation Area



At A	
N	1132405
E	0668122

U.T.M.

Hand-held GPS Receiver
Nap. Datum +/- 5m.

SCALE: 1/750

Distances are in Metres.

○ Denotes Iron put unless otherwise stated

Bearings are Cassini Grid based on Solar Observations

PLAN of a parcel of land coloured pink in the Ward of Naparima
Containing eight hundred and twenty-seven point two square metres (8904 S.F.)
Surveyed by me, with due authority, in August 2011 for Donald Webster.
In accordance with Regulation 25 (1) of the Land Surveyors' Regulations 1998,
I certify that this plan is correct.

.....*S. Reemaul*.....T.T.L.S.

Entered on.....

.....11th August.....

