

1548

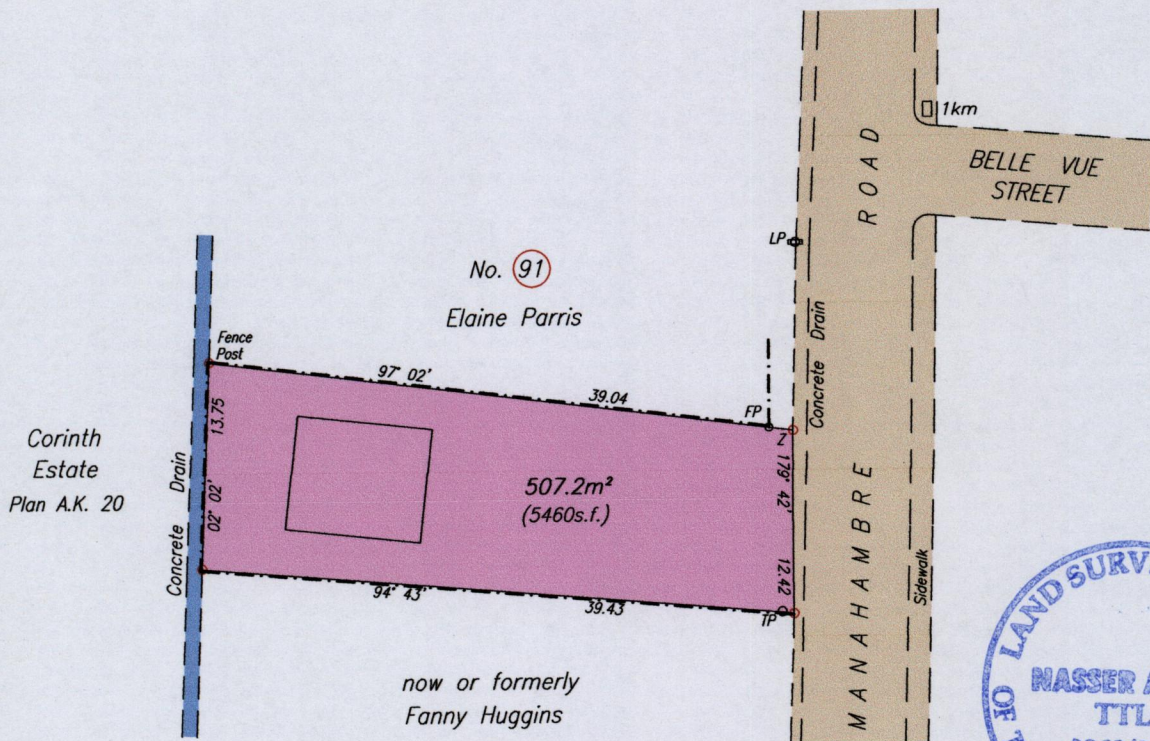
158

R.D. 200500183766

Cadastral Sheet G.3.K. $\frac{53F}{4/a}$
Ward of Naparima
County of Victoria

Process ID# 447811

No. 93 Manahambre Road
St. Madeleine Village



MINISTRY OF FOOD PRODUCTION
LAND AND MARINE AFFAIRS
Avs 219
DEC 28 2011
Lands & Surveys Division

Station	Bearing	Distance	Station
Z	01° 02'	12.42	LP
Z	10° 28'	60.00 (n.t.s)	1km

---Wire Fence

SCALE 1/500

Distances are in metres

Z N. 1135 910 Hand Held GPS +/- 5m
E. 0671 775 UTM proj. Nap 1955

o Denotes Iron Put unless otherwise stated
 Bearings are Cassini Grid based on Solar Observations
 Plan of a Parcel of land coloured pink in the County of Victoria
 Containing five zero seven point two square metres
 Surveyed by me, with due authority, in December 2011 for Joy Chipudhla & Others
 In accordance with Regulation 25 (1) of the Land Surveyors' Regulations 1998,
 I certify that this plan is correct.

Entered On.....

.....
Nasser Abdul Tils
Trinidad & Tobago Land Surveyor.....2011