

Survey to Amend a Previous Survey

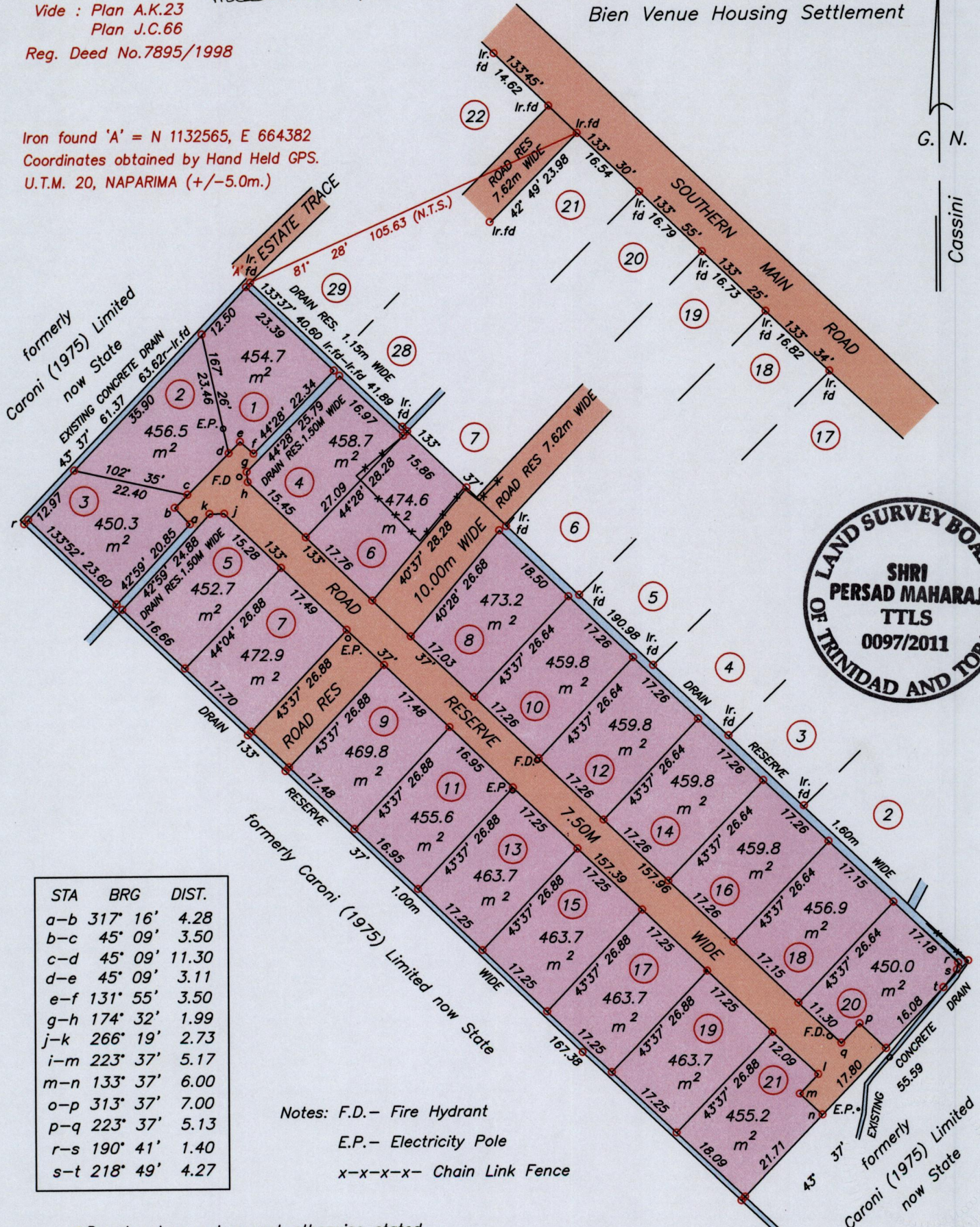
Process ID # 47765

Vide : Plan A.K.23
Plan J.C.66
Reg. Deed No.7895/1998

Iron found 'A' = N 1132565, E 664382
Coordinates obtained by Hand Held GPS.
U.T.M. 20, NAPARIMA (+/-5.0m.)

1548

151



STA	BRG	DIST.
a-b	317° 16'	4.28
b-c	45° 09'	3.50
c-d	45° 09'	11.30
d-e	45° 09'	3.11
e-f	131° 55'	3.50
g-h	174° 32'	1.99
j-k	266° 19'	2.73
i-m	223° 37'	5.17
m-n	133° 37'	6.00
o-p	313° 37'	7.00
p-q	223° 37'	5.13
r-s	190° 41'	1.40
s-t	218° 49'	4.27

Notes: F.D.- Fire Hydrant
E.P.- Electricity Pole
x-x-x-x- Chain Link Fence

o Denotes Iron put except otherwise stated.
Bearings are Cassini Grid based on solar observations.
To obtain compass bearings subtract 5 minutes.

SCALE 1/1000
Distances are in metres

Plan of 21 parcels of Land coloured pink in the Ward of Naparima
Containing together nine thousand six hundred and seventy five point one square metres
Surveyed by me with due authority in December 2002 for Sugar Industry Labour Welfare Committee
In accordance with Regulation 25 (1) of the Land Surveyors' Regulations 1998,
I certify that this plan is correct.

Checked by *Shri Persad Maharaj*
Entered on Trinidad & Tobago Land Surveyor. 15th December 2011.