

Process ~~SDA~~ 47716

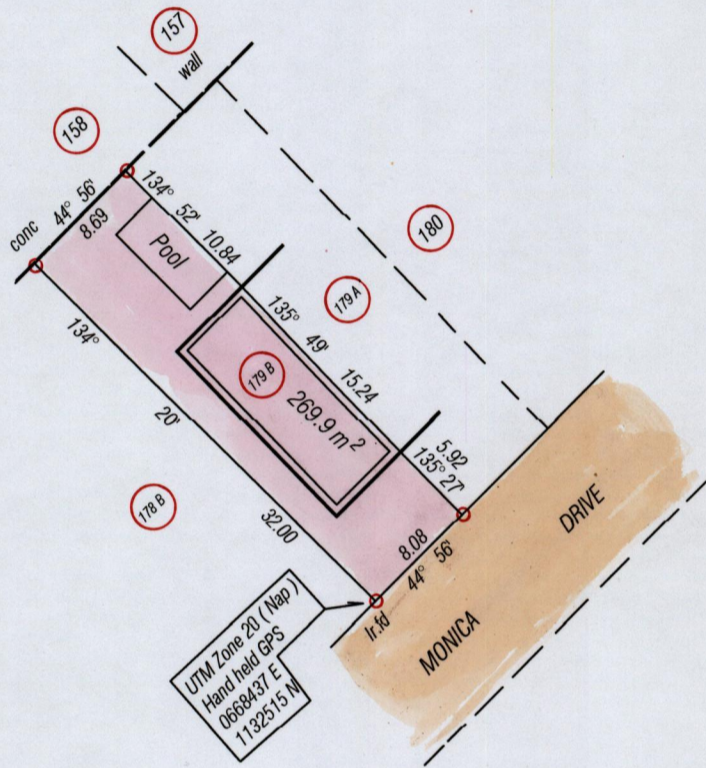
15483

Cadastral Sheet G 8 F 63 B
County of Victoria 2/ B
Ward of Naparima

147

G N
Cassini

R.D No DE 200703254609



Bearings are Cassini Grid based on Solar Obs.

o Denotes iron put except otherwise stated
add

SCALE 1 / 500

Distances are in Metres

Note: To obtain compass bearing subtract minutes

PLAN of a Parcel of land coloured pink in the Ward of Naparima

Containing two hundred and sixty nine point nine square metres

Surveyed by me, with due authority, in May 2011

In accordance with Regulation 25 (1) of the Land Surveyors' Regulations 1998, I certify that this plan is correct

Checked by.....

Entered on.....

Winston Ramcharan
Trinidad & Tobago Land Surveyor... 15th Decemb 2011

