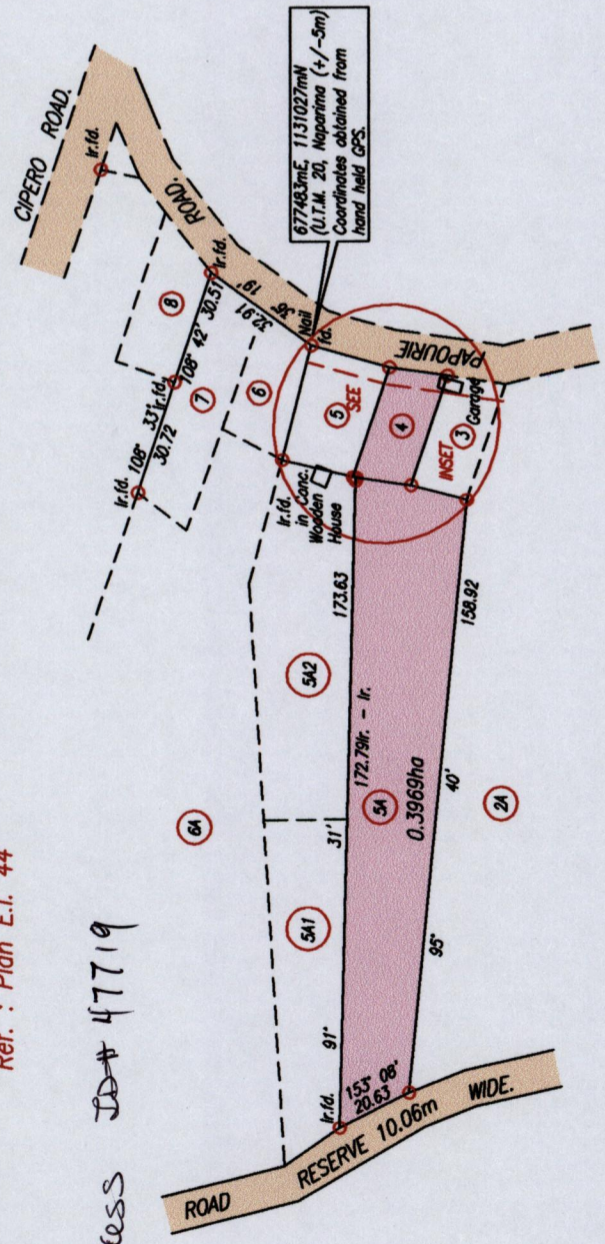


Ref. : Plan E.I. 44

Process ID# 47719



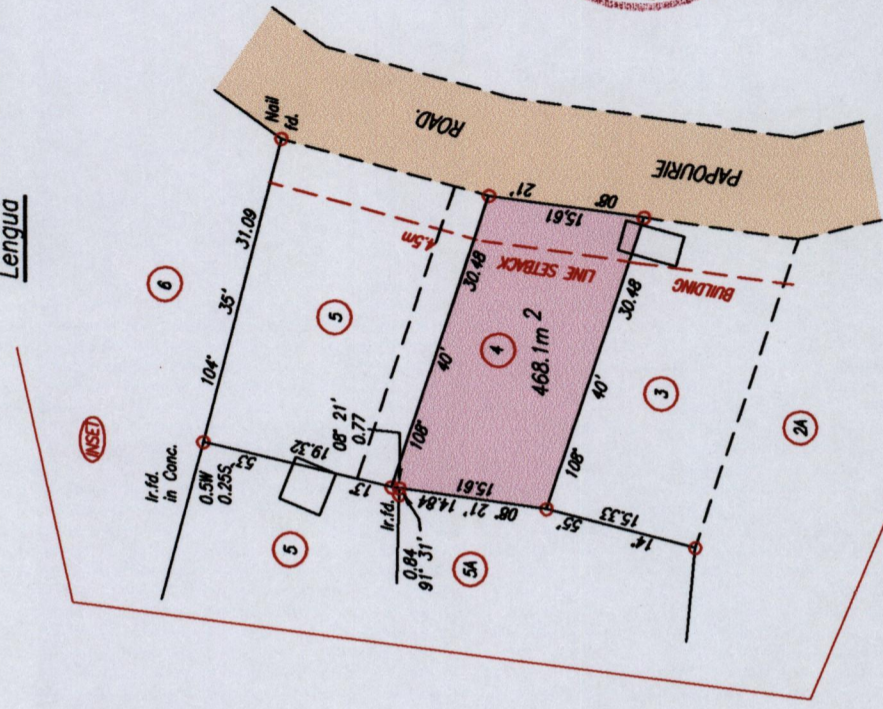
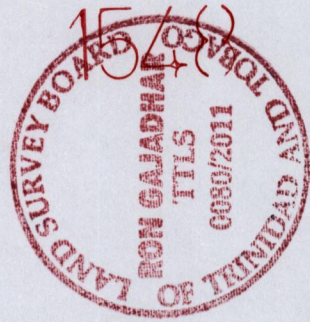
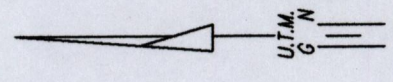
SCALE 1 : 2000
Distances are in metres

○ Denotes Iron put except otherwise stated
Bearings are Cassini Grid based on Solar Observations
PLAN of 2 Parcels of land coloured pink in the Ward of Naparima
Containing together zero point four three seven hectare
Surveyed by me, with due authority, in October, 2011 at the request of Gemma Nurse.
In accordance with Regulation 25 (1) of the Land Surveyors' Regulations 1998,
I certify that this plan is correct.

[Signature]

Entered on..... Trinidad & Tobago Land Surveyor. 7/12/11

Cadastral Sheet G.9.G. 64A
2/c
Ward of Naparima
County of Victoria
Lot No.5A, Papourie Road,
Lengua



SCALE 1 : 750



145