

1548

143

Process ID# 41634

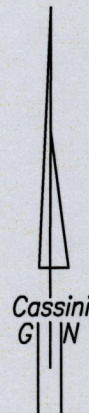
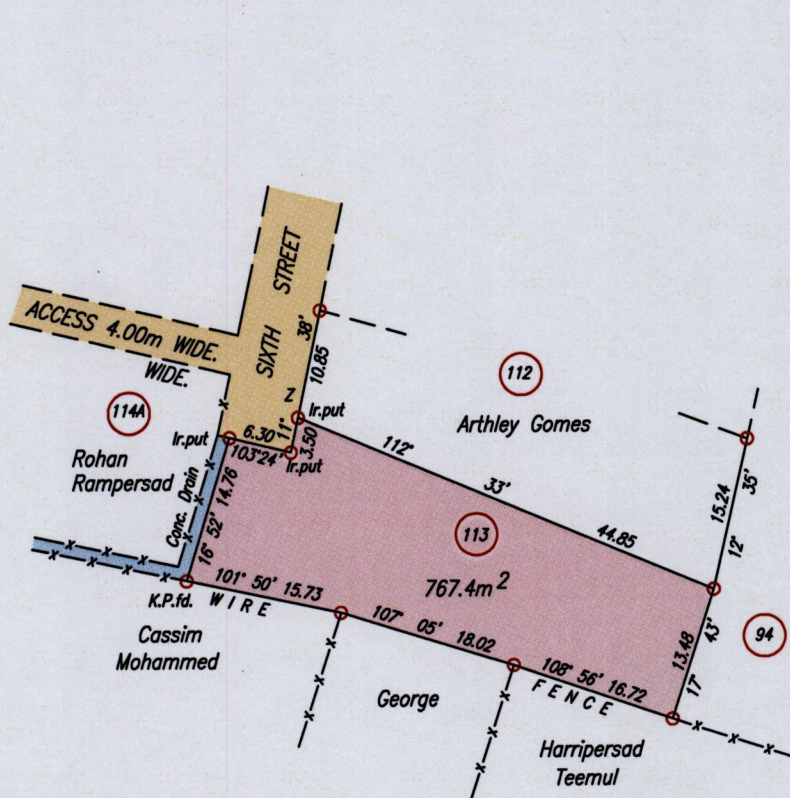
Cadastral Sheet G.4.J. 54D  
3/b

Reg. Deed No. 1756/1991

Ward of Naparima

County of Victoria

Malgretoute



Point Z : 676294mE, 1135612mN  
 (U.T.M. 20, WGS 84 (+/-5m))  
 Coordinates obtained from  
 hand held GPS.



SCALE 1:750

Distances are in metres

- x-x-x- Denotes Wire Fence
- o Denotes Iron found except otherwise stated
- Bearings are Cassini Grid based on Solar Observations
- PLAN of a Parcel of land coloured pink in the Ward of Naparima
- Containing seven hundred and sixty seven point four square metres
- Surveyed by me, with due authority, in November, 2011 for Ramsaran Moonan
- In accordance with Regulation 25 (1) of the Land Surveyors' Regulations 1998,
- I certify that this plan is correct.

*Winston Ramcharan* .....

Entered on.....

Trinidad & Tobago Land Surveyor. 12<sup>th</sup>. December . . . 2011.

