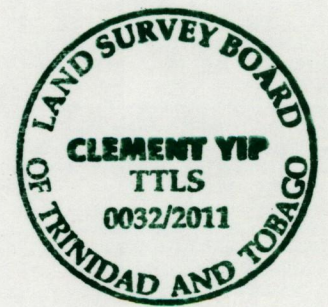
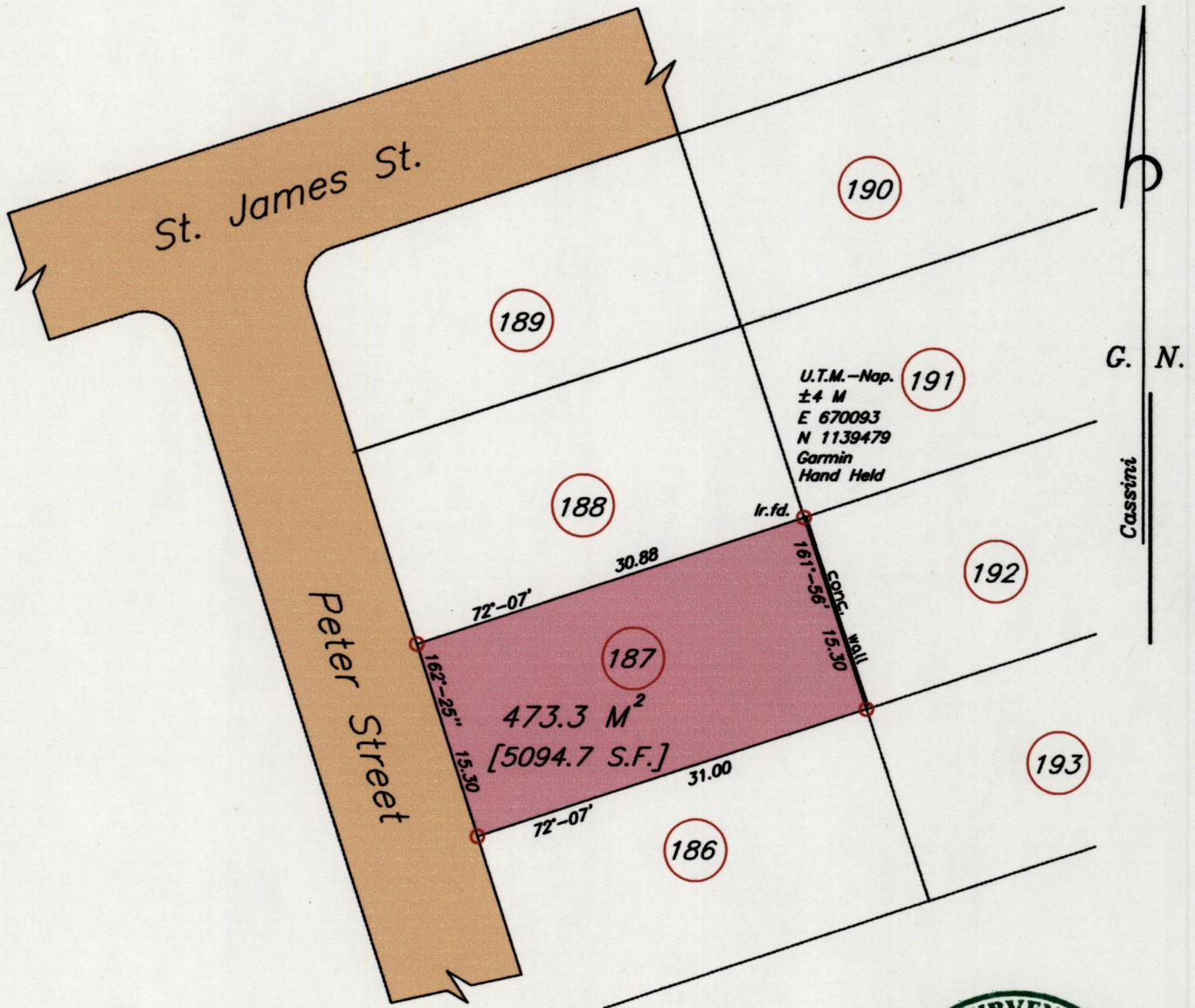


Process ID# 41575
U.P.I.N. No.

1548} Ward of Naparima 140
County of Victoria
Cadastral Sheet G.3.B.

ORIG. DEED .2332/1963
VIDE; A.M.41

53.C.
3/c/2



Scale: 1/500

○ Denotes Ir. pt. unless stated otherwise. Bearings are based on Solar Observations. Distances are in Metres.

PLAN of a parcel of land coloured pink in the Ward of Naparima
Containing Four Hundred and seventy three point three sq. Metres.
Surveyed by me with due authority, in Dec. 2011

For Simon Baldeo

In accordance with Regulation 25[1] of the Land Surveyors Regulations 1998,
I certify that this plan is correct.

Entered
Entry Checked
Battoo-Av.

Clement Yip
Trinidad & Tobago Land Surveyor 2011

MINISTRY OF FOOD PRODUCTION
LAND AND MARINE AFFAIRS
DEC 08 2011
#29
Lands & Surveys Division