

49P

1548

138

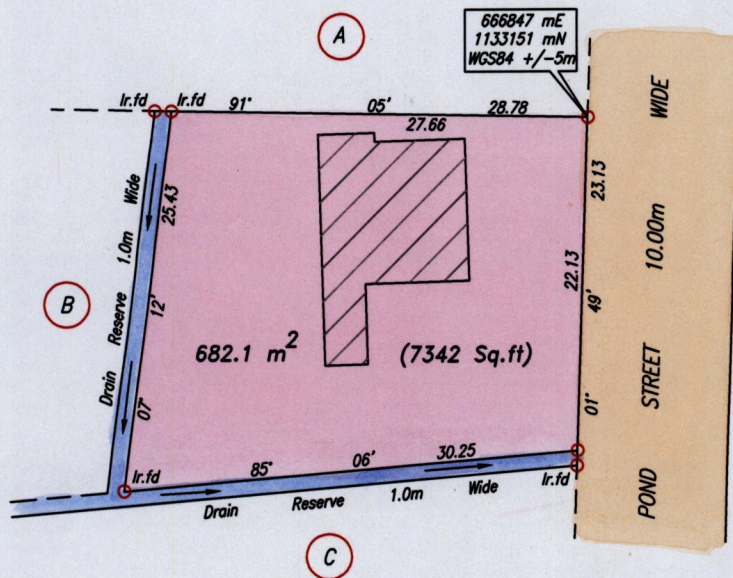
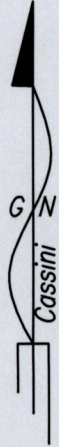
Process ~~ID#~~ 47585

Cadastral Sheet G.8.B $\frac{63C}{1/a}$

Ward of Naparima

County of Victoria

ESPERANCE

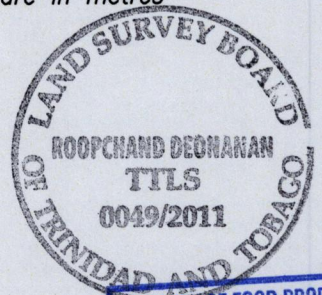


Coordinates obtained from hand held G.P.S.

SCALE 1:500

Distances are in metres

○ Denotes Iron put except where otherwise stated
 Bearings are Casini Grid based on Solar Observations
 PLAN of a Parcel of land coloured pink in the Ward of Naparima
 Containing six hundred and eighty two point one square metres
 Surveyed by me, with due authority, in November 2011 for Dolly Ramoutar
 In accordance with Regulation 25 (1) of the Land Surveyors' Regulations 1998,
 I certify that this plan is correct.



Checked by

Deonanan

Entered on

Trinidad & Tobago Land Surveyor.
PATH = ADA004 C:/DEO/DOLLY RAMOUTAR DWG.

5th December, 2011

