

49P

1548

137

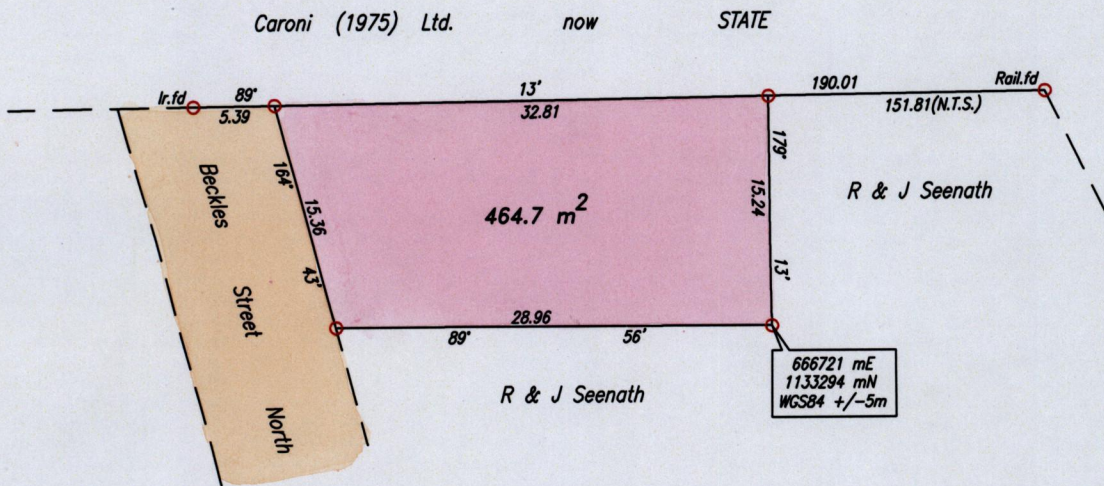
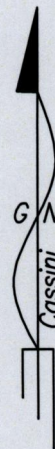
Process ID# 47583

Cadastral Sheet G.8.B $\frac{63C}{1/a}$

Ward of Naparima

County of Victoria

ESPERANCE



SCALE 1:500

Distances are in metres

Coordinates obtained from hand held G.P.S.

○ Denotes Iron put except where otherwise stated
 Bearings are Cassini Grid based on Solar Observations
 PLAN of a Parcel of land coloured pink in the Ward of Naparima
 Containing four hundred and sixty four point seven square metres
 Surveyed by me, with due authority, in November 2011 for Rukhiya Bhagwandeem
 In accordance with Regulation 25 (1) of the Land Surveyors' Regulations 1998,
 I certify that this plan is correct.

Checked by

Roopchand Deonanan

Entered on

Trinidad & Tobago Land Surveyor.
PATH = ADA004 C:/DEO/RUKHIYA BHAGWANDEEN DWG.

5th December 2011.

