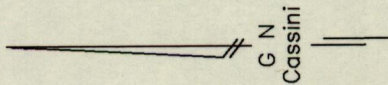
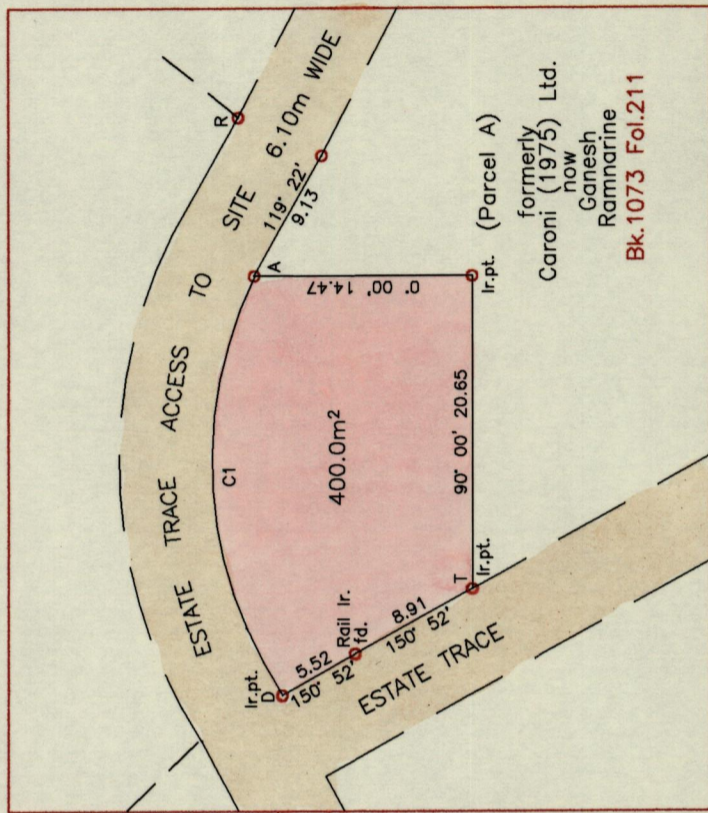


63F
Cadastral Sheet 2/c (G.13.C.)
Ward of Naparima
County of Victoria

Site T099D Barrackpore
Transfer Village, Picton Section, Debe

From	To	Bearing	Distance
A	R	84° 14'	10.52
R	B	38° 52'	16.75
P	Q	179° 56'	9.16
T	S	119° 03'	119.10
D	A	86° 09'	27.74

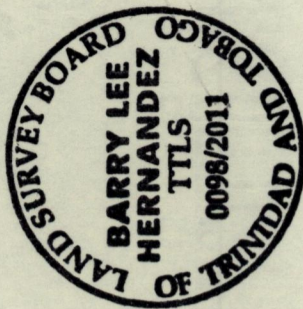
INSET



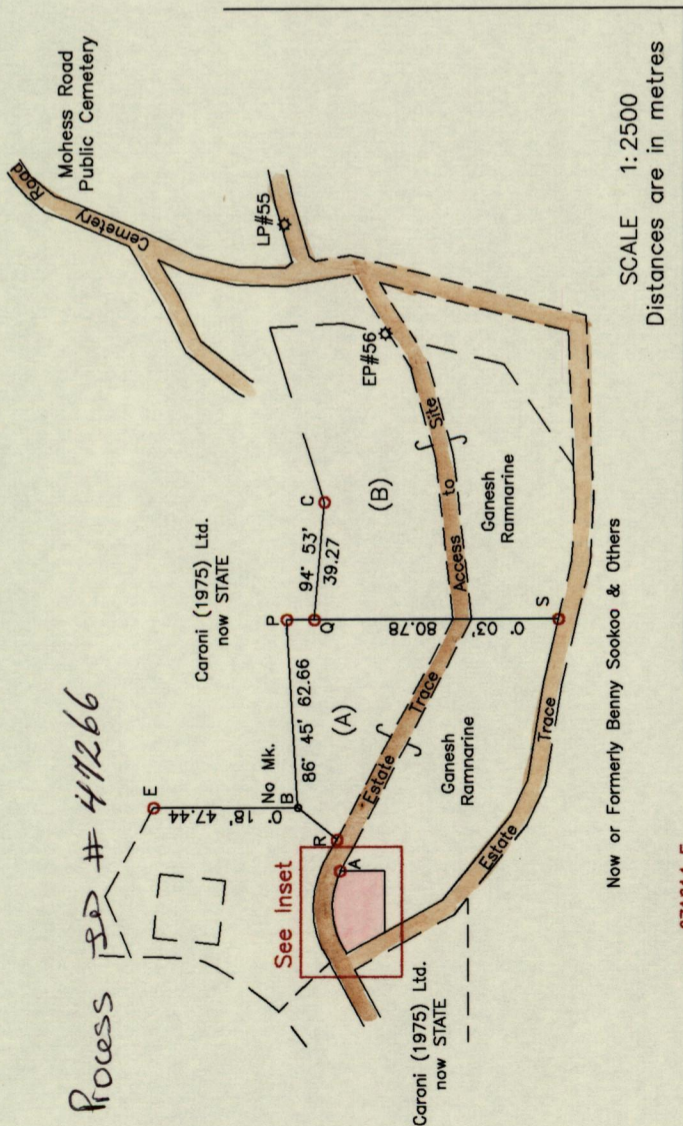
1548

132

SCALE 1:500
Distances are in metres



G412010.L.DWG



SCALE 1:2500
Distances are in metres

Curve	C1
Delta	60° 08'
Radius	27.68
Chord	27.74

A = 671614 E
1126145 N

Reference:
R.D. #DE200401628366
PLAN J.E.55

Notes: ○ Denotes Ir.f.d. unless otherwise stated

Bearings are Cassini Grid based on Solar Observations

Previous survey by Roopchand Deonanan in July 2003

Previous survey by Hollis Eversley in Sept. 2007 for Ganesh Ramnarine

Coordinates obtained by handheld GPS (UTM Zone 20, Naparima ± 5.0m)

PLAN of a parcel of land coloured pink in the Ward of Naparima

Containing four hundred point zero square metres

Surveyed by me, with due authority, in November 2011 for Digicel (Trinidad & Tobago) Ltd.

In accordance with regulation 25(1) of the Land Surveyors Regulations 1998, I certify that this plan is correct

Checked by

Entered on

Barry Hernandez

..... 25th November 2011.

150