

U.P.R.N.....

Process ID # 42439

Coordinates

Ir.pt. E : N 1114876
E 685192

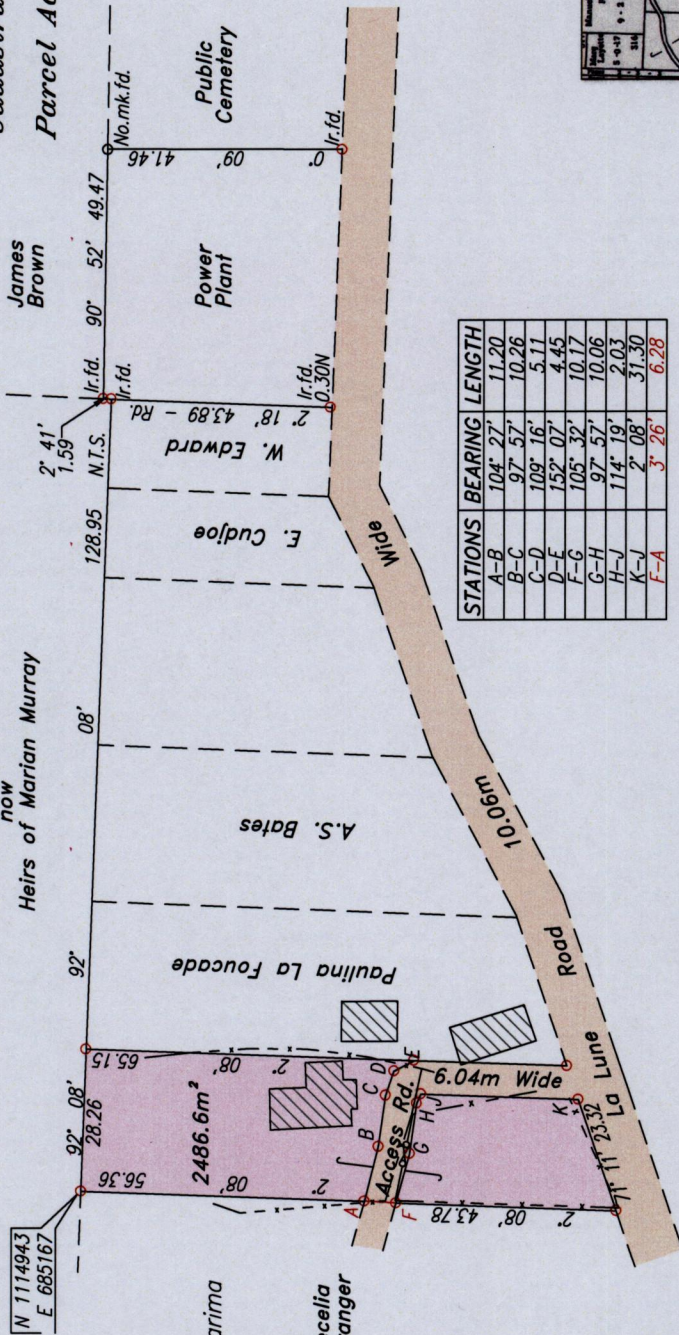
Error Statement : ±4m

Datum Definition : U.T.M. Zone 20 Naparima

Source : Magellan Hand Held GPS



Ward of Moruga
County of Victoria
Cadastral Sheet (G.20.0. & G.25.C), 74E
Parcel Address: #298A La Lune,
Road Moruga.



STATIONS	BEARING	LENGTH
A-B	104° 27'	11.20
B-C	97° 57'	10.26
C-D	109° 16'	5.11
D-E	152° 07'	4.45
E-G	105° 32'	10.17
G-H	97° 57'	10.06
H-J	114° 19'	2.03
K-J	2° 08'	31.30
F-A	3° 26'	6.28

SCALE: 1:1500

Distances are in metres.

Plan of a Parcel of land coloured pink in the Ward of Moruga

Containing two thousand four hundred and eighty six point six square metres.

Surveyed by me, with due authority, in April 2011 at the request of Bruno Placide.

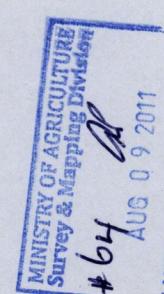
In accordance with Regulation 25(1) of the Land Surveyors' Regulations 1998,

I certify that this plan is correct.

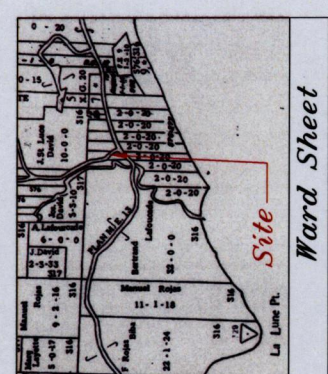
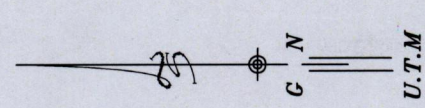
Entered Trinidad & Tobago Land Surveyor 2 Aug 2011

SARDO

Ref. plan: X.G.20
F.E.9
S.O.No. 106/47
Bk. 576 Fol. 277
Bk. 1065 Fol. 219



LANDS & MARINE RESOURCES



1548

13