

15483

128

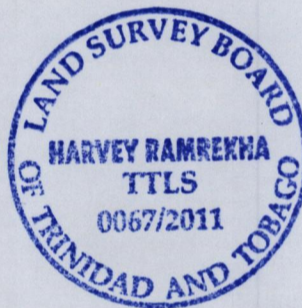
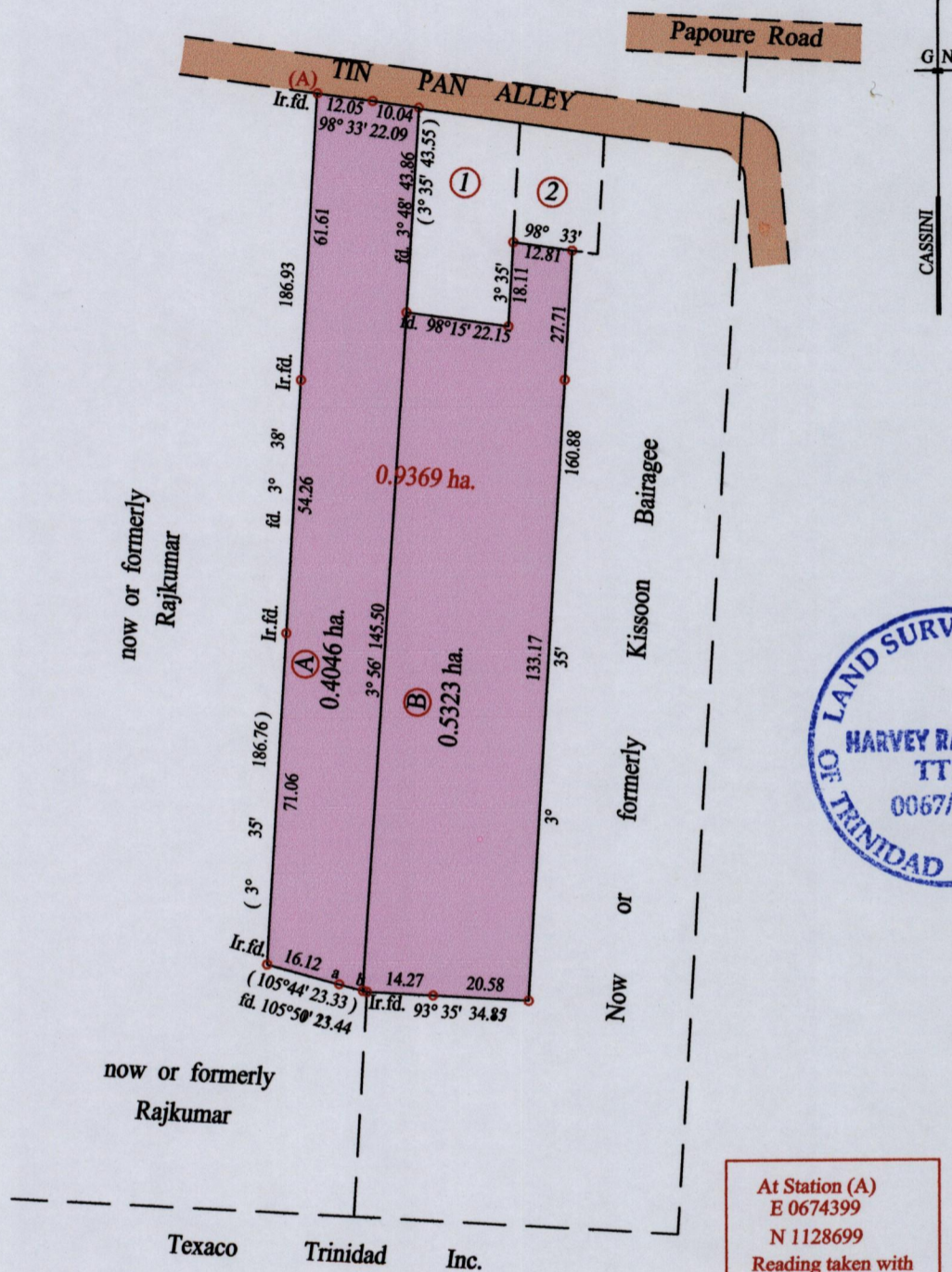
Reg. Deed No. DE201001763833

Ward of Naparima

County of Victoria

Cadastral Sheet (G 9 M) 64. A.
3/c

Process ~~SD~~ 47219



At Station (A)
E 0674399
N 1128699
Reading taken with
Handheld G.P.S.
U.T.M. 20 Naparima
± 5m

Line	Bearing	Distance
a-b	105° 44'	5.30
b-Ir.f.d.	105° 44'	0.91

○ Denotes Iron put except stated otherwise.

SCALE : 1:1500

Note: Bearings are cassini grid based on solar observations Distances are in metres

PLAN of 2 Parcels of land coloured pink in the Ward of Naparima

Containing together zero point nine three six nine hectares

Surveyed by me, with due authority, in May 2010 for Ms. Chandrawatee Dawson

In accordance with Regulation 25 (1) of the Land Surveyors' Regulations 1998,

I certify that this plan is correct.

Checked by

Entered on

Trinidad & Tobago Land Surveyor 12.11.2011

