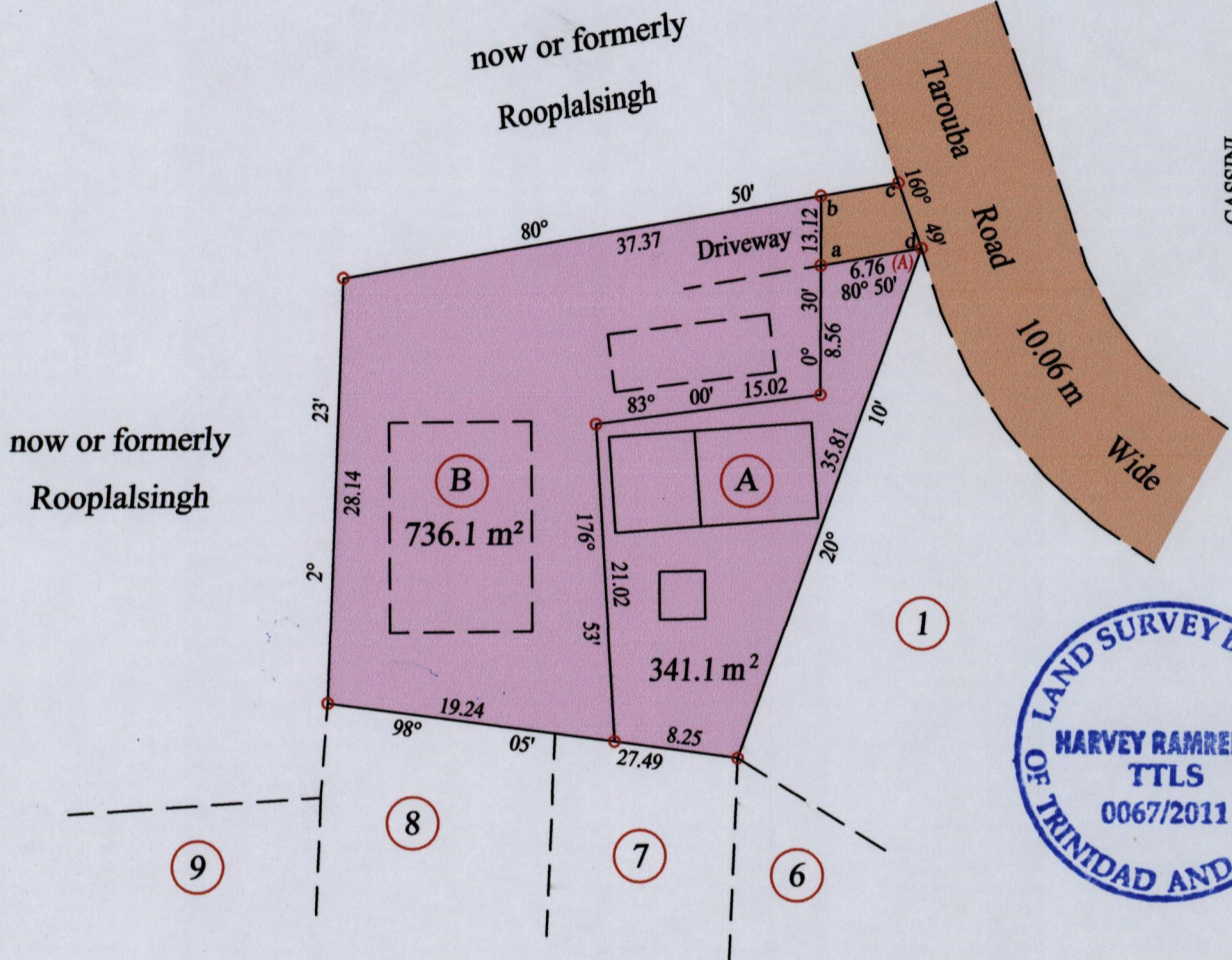
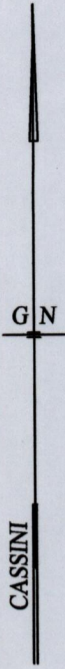


Process ~~IDA~~ 47197

1548

127

Ward of Naparima
County of Victoria
Cadastral Sheet (G.3) 53.F.
1/b



Station (A)
E 0670232
N 1138003
Reading taken with
Handheld G.P.S.
U.T.M. Zone 20
Naparima
± 5 m.

Shared Driveway Area 27.0 m²

a - b	0°	30'	4.57
b - c	80°	50'	5.20
c - d	160°	49'	4.57
d - a	80°	50'	6.76

○ Denotes Iron put except stated otherwise.

SCALE : 1:500

Note: Bearings are cassini grid based on solar observations Distances are in metres

PLAN of 2 Parcels of land coloured pink in the Ward of Naparima
Containing together one thousand and seventy seven point two square metres
Surveyed by me, with due authority, in September 2009 for Mr. Sheldon Boodoo
In accordance with Regulation 25 (1) of the Land Surveyors' Regulations 1998,
I certify that this plan is correct.

Checked by

Entered on Trinidad & Tobago Land Surveyor 14. 11. 2011

