

Process ~~SA~~ 47189

1548

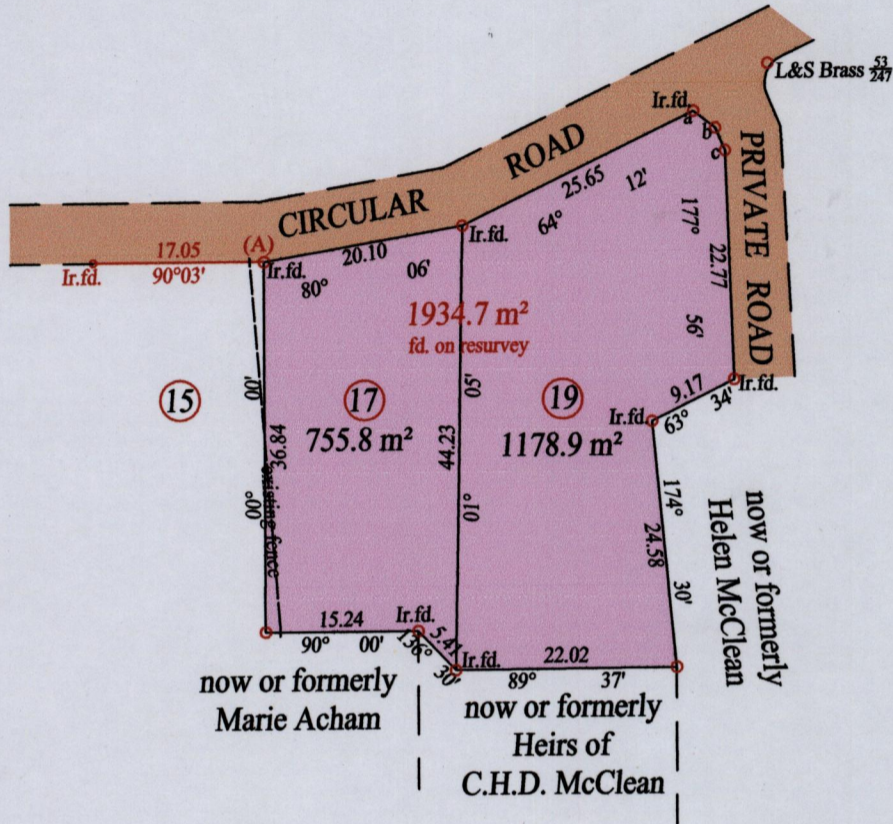
City of San Fernando

126

County of Victoria

Cadastral Sheet ( G.3.F. ) 53.E.

2/d



At Station (A)  
E 0668709  
N 1137080  
Reading taken with  
Handheld G.P.S.  
U.T.M. Zone 20  
Naparima  
± 5 m.

Line	Bearing	Distance
a - b	127° 41'	2.75
b - c	157° 08'	2.45

Vide Plan E.H. 125

○ Denotes Iron put except stated otherwise.

SCALE : 1:750

Note: Bearings are cassini grid based on solar observations

Distances are in metres

PLAN of 2 Parcels of land coloured pink in the City of San Fernando

Containing together one thousand nine hundred and thirty four point seven square metres

Surveyed by me, with due authority, in November 2011 for Larry Gocool

In accordance with Regulation 25 (1) of the Land Surveyors' Regulations 1998,

I certify that this plan is correct.

Checked by .....

Entered on ..... Trinidad & Tobago Land Surveyor ..... 21.11.2011

