

Process ID# 47184

See Bk. 720 fol. 110

See Bk. 1014 fol. 221

15418

1548

Cadastral Sheet H.1.N. 55D

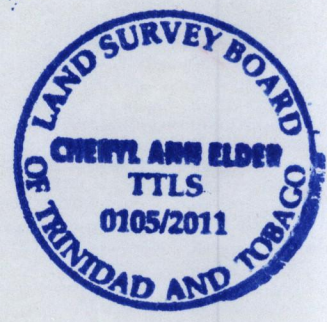
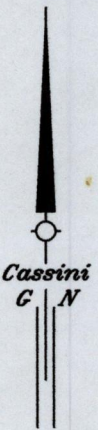
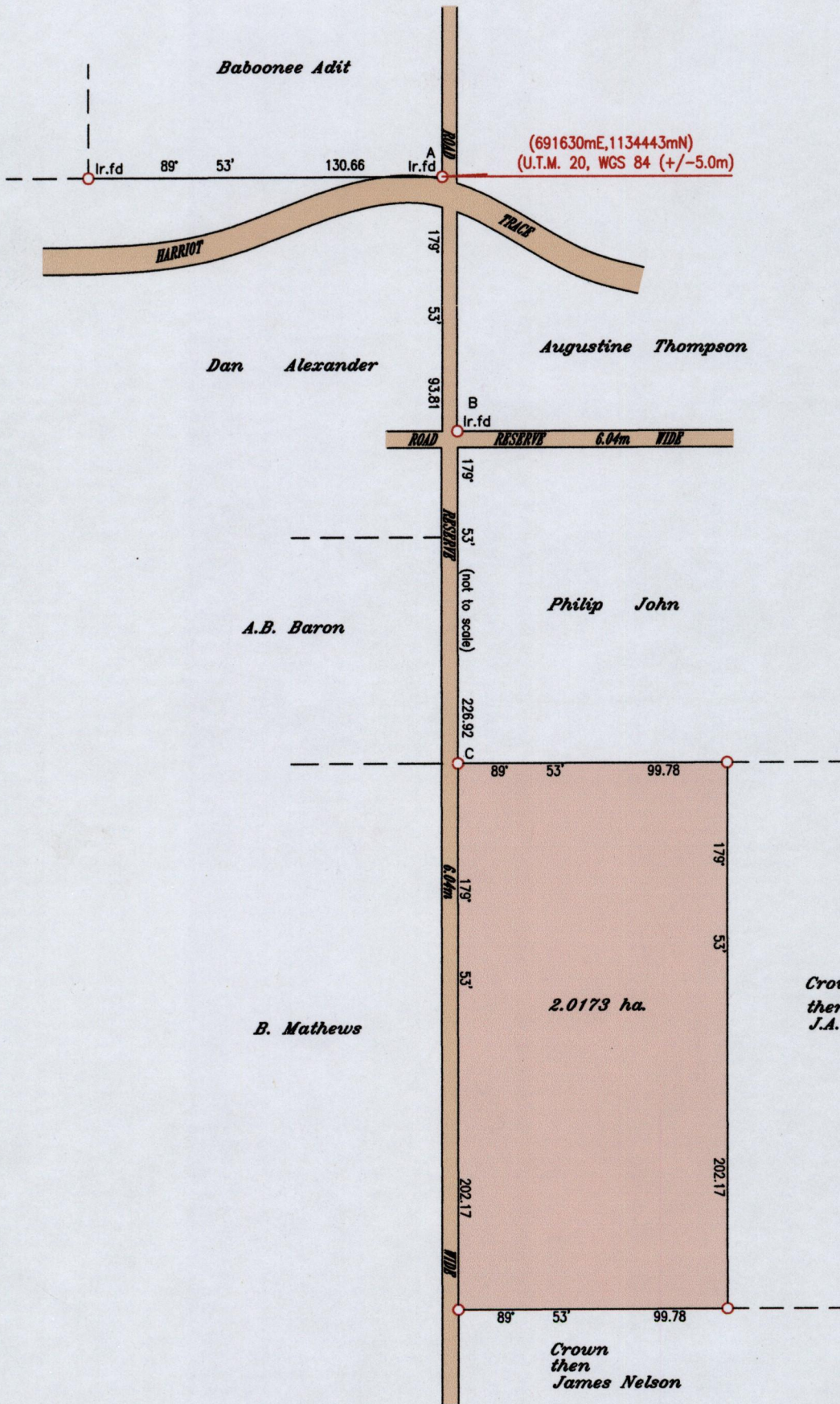
Ward of Ortoire

County of Victoria

124

124

Redefinition Plan



A-B	176° 31'	93.97
B-C	179° 53'	232.35

SCALE 1:1500

Distances are in Metres

○ Denotes Iron put except otherwise stated

Bearings are Cassini Grid based on Solar Observations

Plan of a Parcel of land coloured pink in the Ward of Ortoire

Containing two point zero one seven three hectares

Surveyed by me with due authority, in October 2011 for Arnold Ransome

In accordance with Regulation 25 (1) of the Land Surveyors' Regulations 1998,

I certify that this plan is correct.

Checked by..... *Cheryl Ann Elder*.....

Entered..... *Trinidad & Tobago Land Surveyor* 18th Nov. 2011.....

