

Process ID#42175

1548

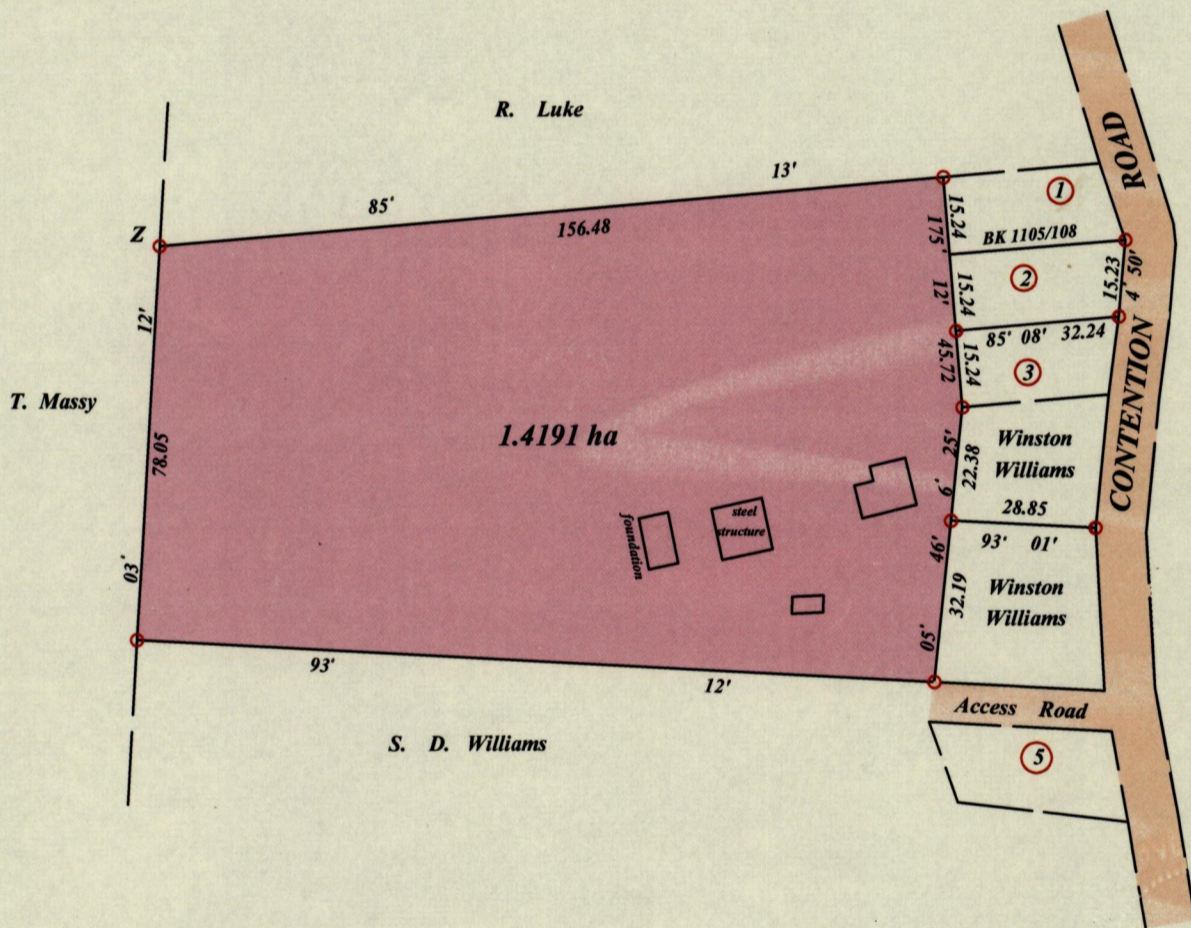
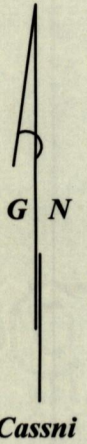
123

Cadastral Sheet G. 5. M. 54E
3/d

Ward of Ortoire

County of Victoria

R. D. 9697 of 1981



Z - N1134509, E681781

SCALE 1 : 1500

Distances are in metres

Coordinates on hand held Magellan GPS Receiver WGS 84 +/- 5 metres point Z

- Denotes iron found except otherwise stated
- Bearings are Cassini Grid based on Solar Observations

PLAN of a parcel of land coloured pink in the Ward of Ortoire
 Containing one point four one nine one hectares
 Surveyed by me, with due authority, in June 2010 for Winston Williams
 In accordance with Regulation 25 (1) of the Land Surveyors Regulations 1998,
 I certify that this plan is correct.

Checked by Murchison Pierre

Entered on Trinidad & Tobago Land Surveyor 28th July, 2011

