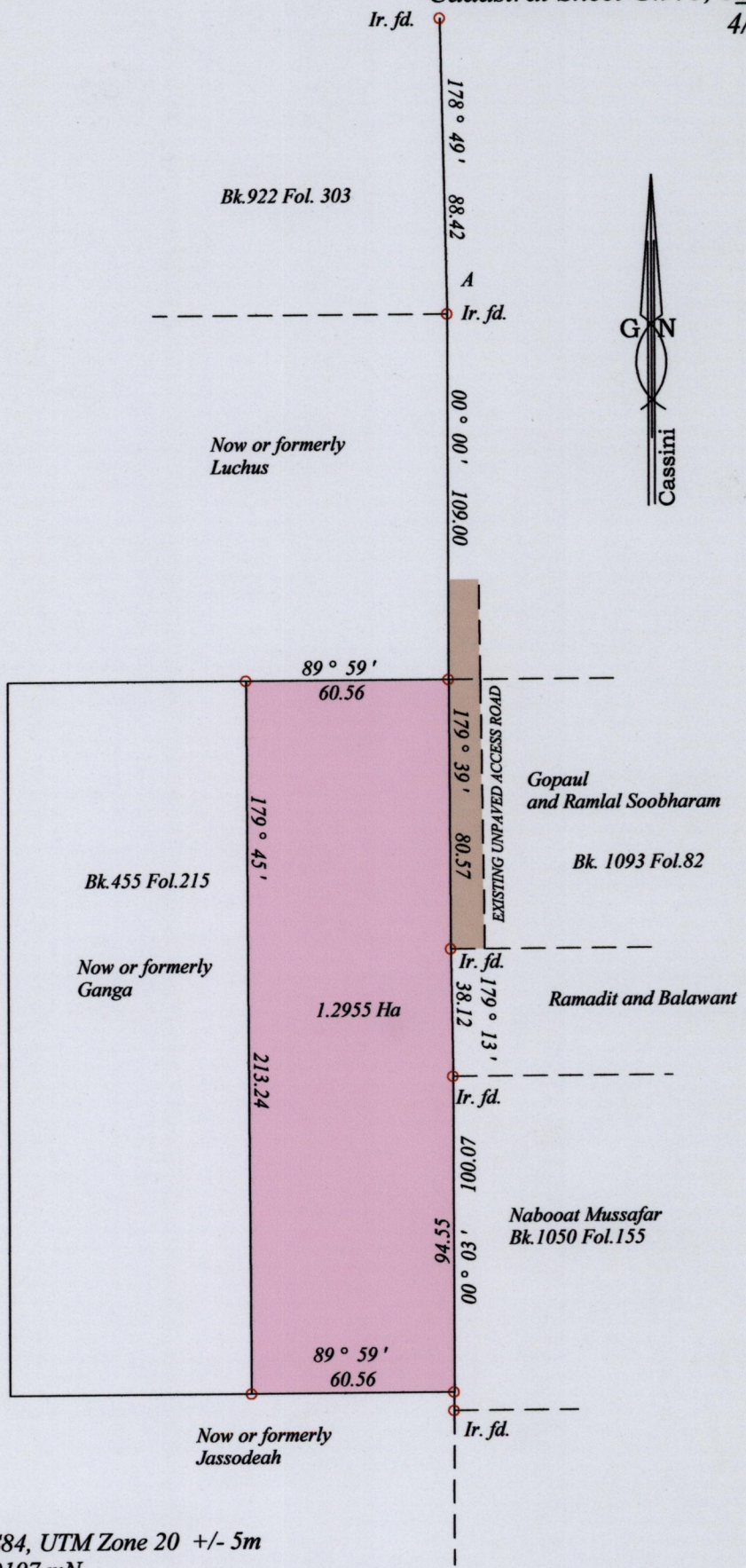


Procen ID# 46741

1548

County of Victoria
Ward of Naparima
Cadastral Sheet G.9. J, 64D
121
4/a



Coordinates are in WGS84, UTM Zone 20 +/- 5m
At. A- 677525 mE, 1130197 mN

○ Denotes Iron put unless otherwise stated
Bearings are Cassini Grid based on solar observations

SCALE : 1:2000
Distances are in metres

Plan of a parcel of land coloured PINK in the Ward of Naparima
Containing One pointtwo nine five five hectares
Surveyed by me, with due authority, in November 2011 for Maureen Maturasingh
In accordance with Regulation 25(1) of the Land Surveyors' Regulations 1998,
I certify that this plan is correct.

Checked by *Kelvin Rambass* 11/11/2011
Trinidad and Tobago Land Surveyor
Entered on

