

15483

120

Vistabella Estate

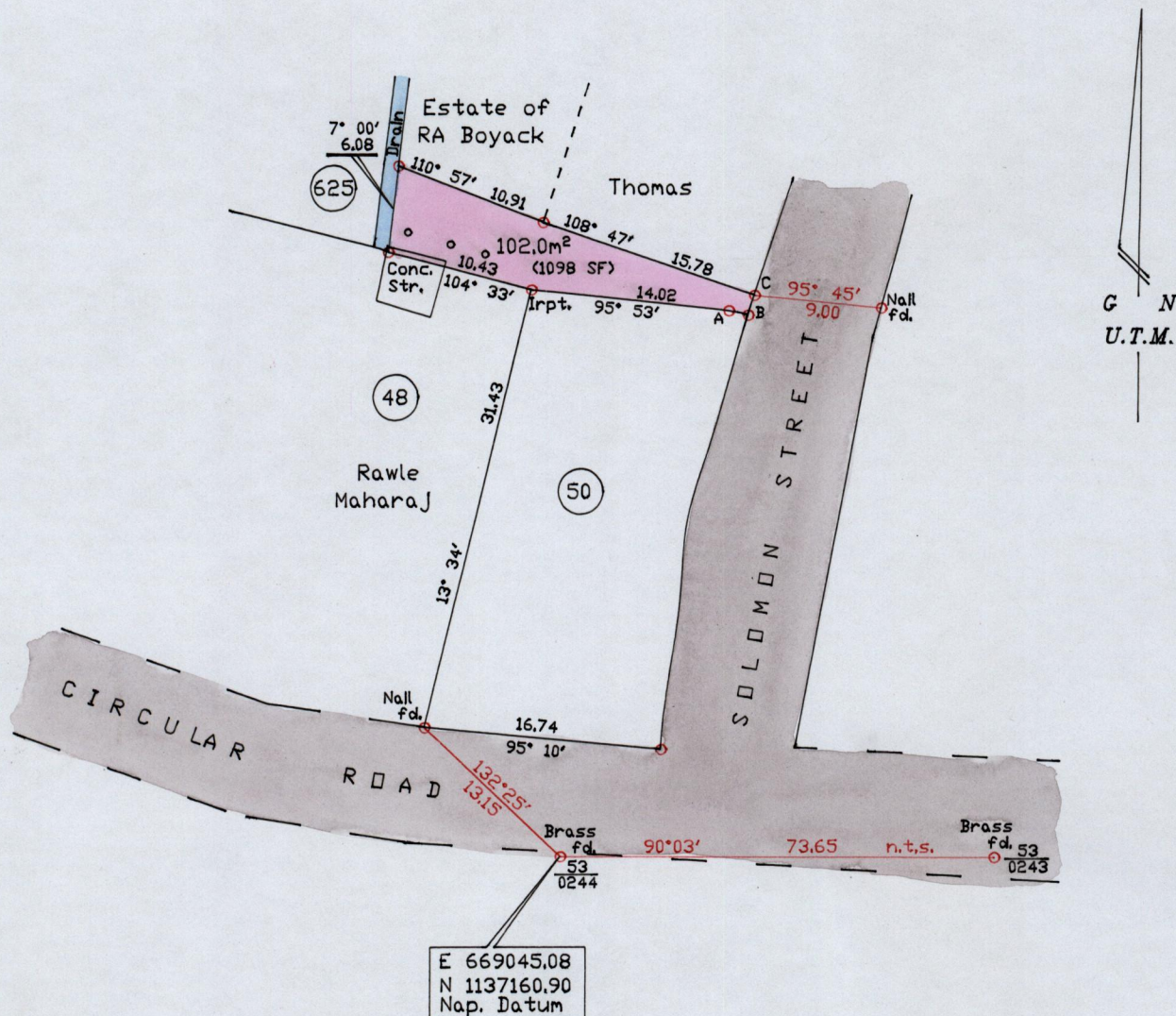
City of San Fernando

County of Victoria

Cadastral Sheet G.3.F.

53F  
1/a

PROCESS ID # 46987



A - B = 101° 13' 1.39  
B - C = 18° 26' 1.46

o - Old Iron Posts  
o denotes irons found except where otherwise indicated  
Note: To obtain Cassini Grid +18 minutes

SCALE 1/500  
Distances are in metres



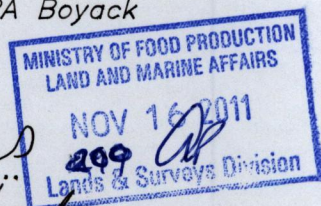
PLAN of a Parcel of land coloured pink in the City of San Fernando  
Containing one hundred and two point zero square metres

Surveyed by me with due authority in Nov. 2011 for Estate of RA Boyack  
In accordance with Reg. 25(1) of the Land Surveyors' Regulations 1998,  
I certify that this plan is correct.

Checked by.....

Entered.....

Trinidad & Tobago Land Surveyor.....2011



4