

1548

116

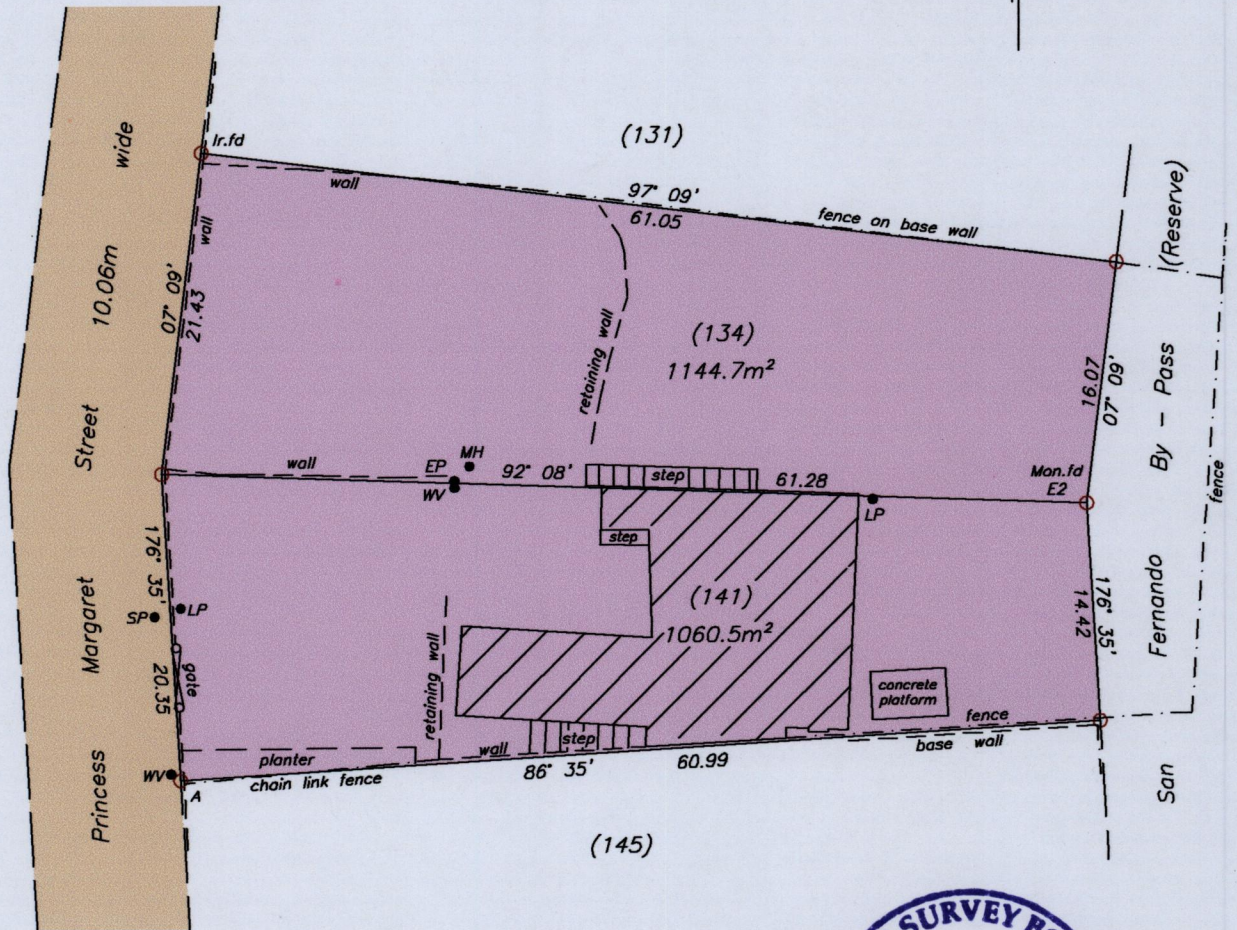
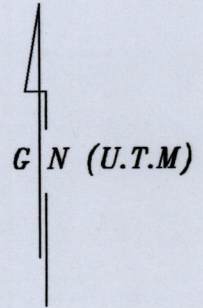
Process ID# 46881

Cadastral Sheet 53E (G.3.J)
4/d

Ward of Naparima

County of Victoria

Ref: Plan C.F.43



A = N 1135138
E 668771

- SP..... Sign Post
- MH..... Man Hole
- LP..... Light Pole
- WV..... Water Valve
- EP..... Electricity Pole

Notes: U.T.M 20 Naparima (GPS +/- 3.0m)

○ Denotes Iron put unless otherwise stated

Bearings are U.T.M Grid based on solar observations



SCALE 1:500

Distances are in METRES

PLAN of 2 Parcels of land coloured pink in the Ward of Naparima.

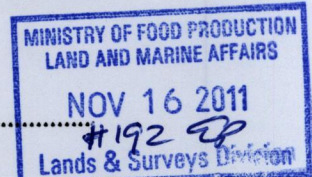
Containing together two thousand two hundred and five point two square metres.

Surveyed by me, with due authority, in November 2011 for Lab Medica Services Limited.

In accordance with Regulation 25 (1) of the Land Surveyors Regulations 1998,

I certify that this plan is correct.

Entered on..... Curtis Gokool



Trinidad and Tobago Land Surveyor... November 162011