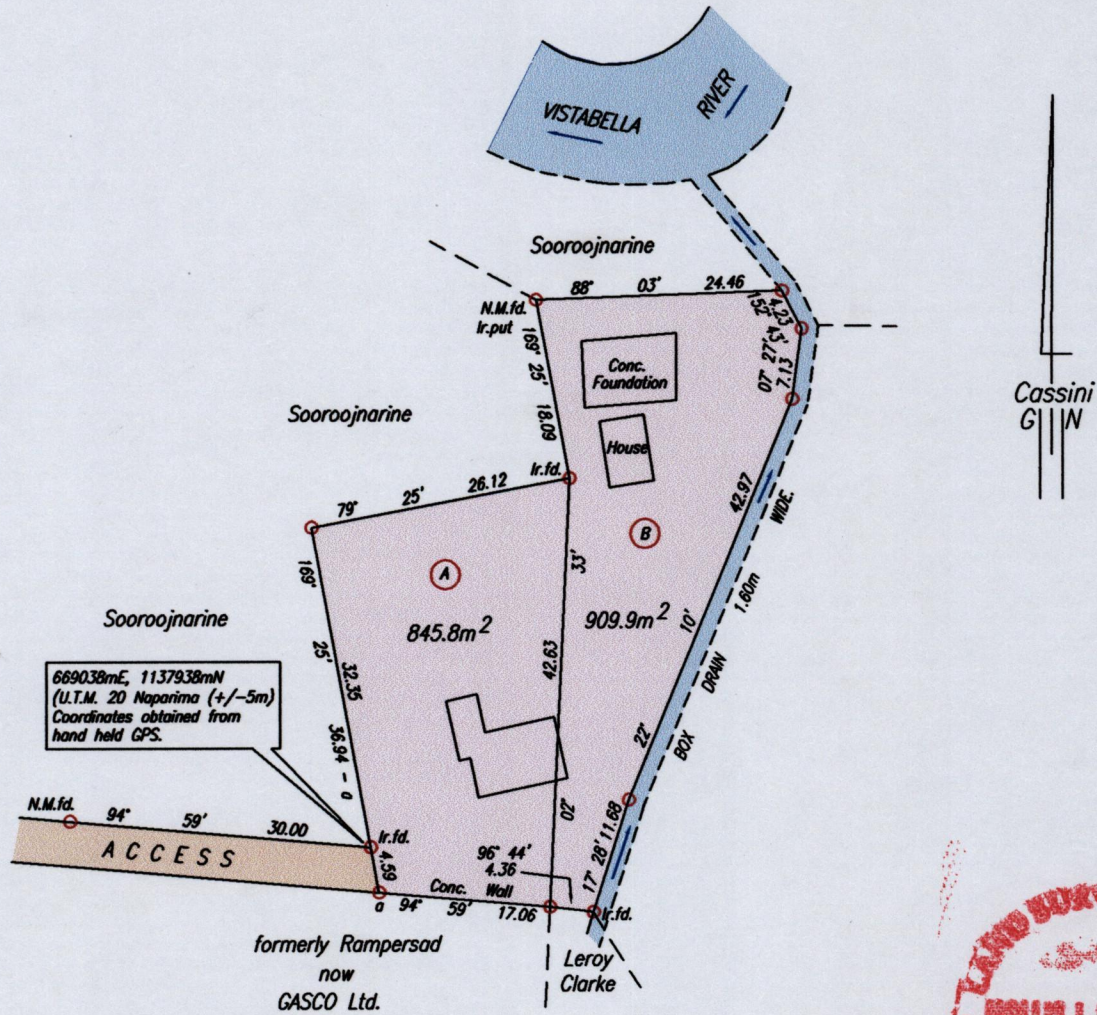


Ref. : Bk. 1016 Fol. 192

Cadastral Sheet G.3.F. 53F
1/a/3
City of San Fernando
County of Victoria
Vistabella

Process ID# 46836



SCALE 1:750

Distances are in metres

○ Denotes Iron put except otherwise stated
 Bearings are Cassini Grid based on Solar Observations
 PLAN of 2 Parcels of land coloured pink in the City of San Fernando
 Containing together one thousand, seven hundred and fifty five point seven square metres.
 Surveyed by me, with due authority, on 8th. July, 2011 for Bala Goolcharan.
 In accordance with Regulation 25 (1) of the Land Surveyors' Regulations 1998,
 I certify that this plan is correct.

Hollis J. Eversley
 30th September 2011.

Entered on..... Trinidad & Tobago Land Surveyor. 2011.

