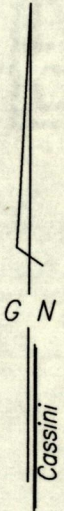
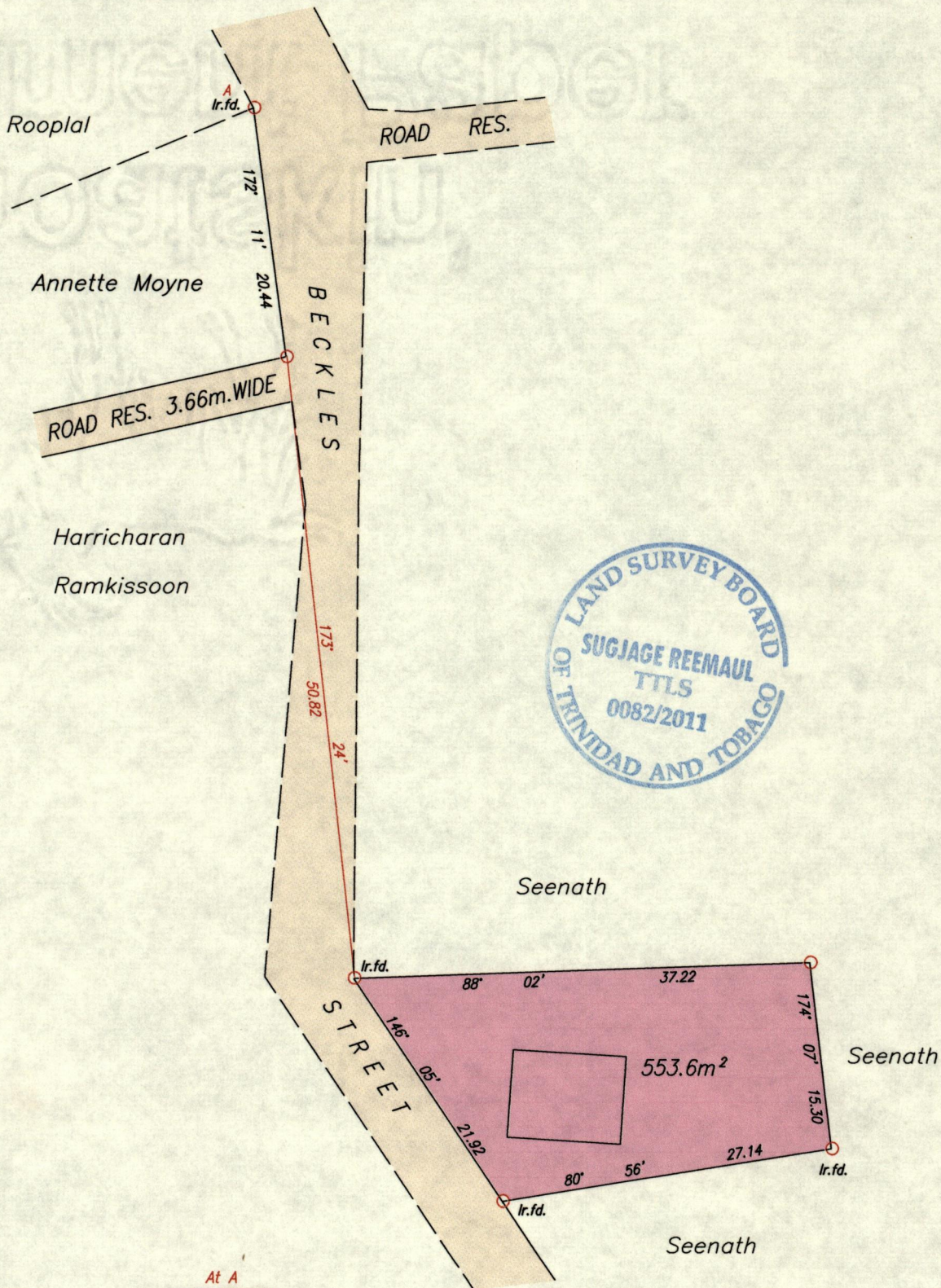


1548

109

Process ~~Int~~ 46752

Ward of Naparima  
County of Victoria  
Cadastral Sheet G.8.B.  $\frac{63C}{1/a}$



At A

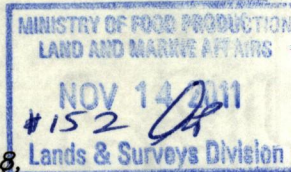
N	1132479	U.T.M.
E	0669729	

obtained from Hand-held  
GPS receiver  
( + / - 5.0m. )

See fol 90  
SCALE 1 / 500  
Distances are in metres

○ Denotes Iron put unless otherwise stated  
Bearings are Cassini Grid based on Solar Observations

Plan of a Parcel of land coloured pink in the Ward of Naparima  
Containing five hundred and fifty-three point six square metres  
Surveyed by me, with due authority, in October 2011 for P. Goonai,  
In accordance with Regulation 25 (1) of the Land Surveyors' Regulations 1998,  
I certify that this plan is correct.



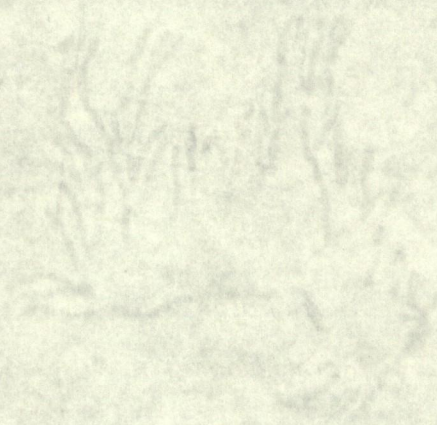
Entered on .....  
S. Reemaul ..... T.T.L.S.  
14<sup>th</sup> Nov, ..... 2011



11

THE UNIVERSITY OF CHICAGO

GOETTSCHIN



11

THE UNIVERSITY OF CHICAGO

GOETTSCHIN