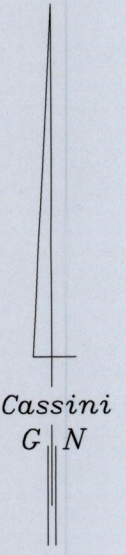
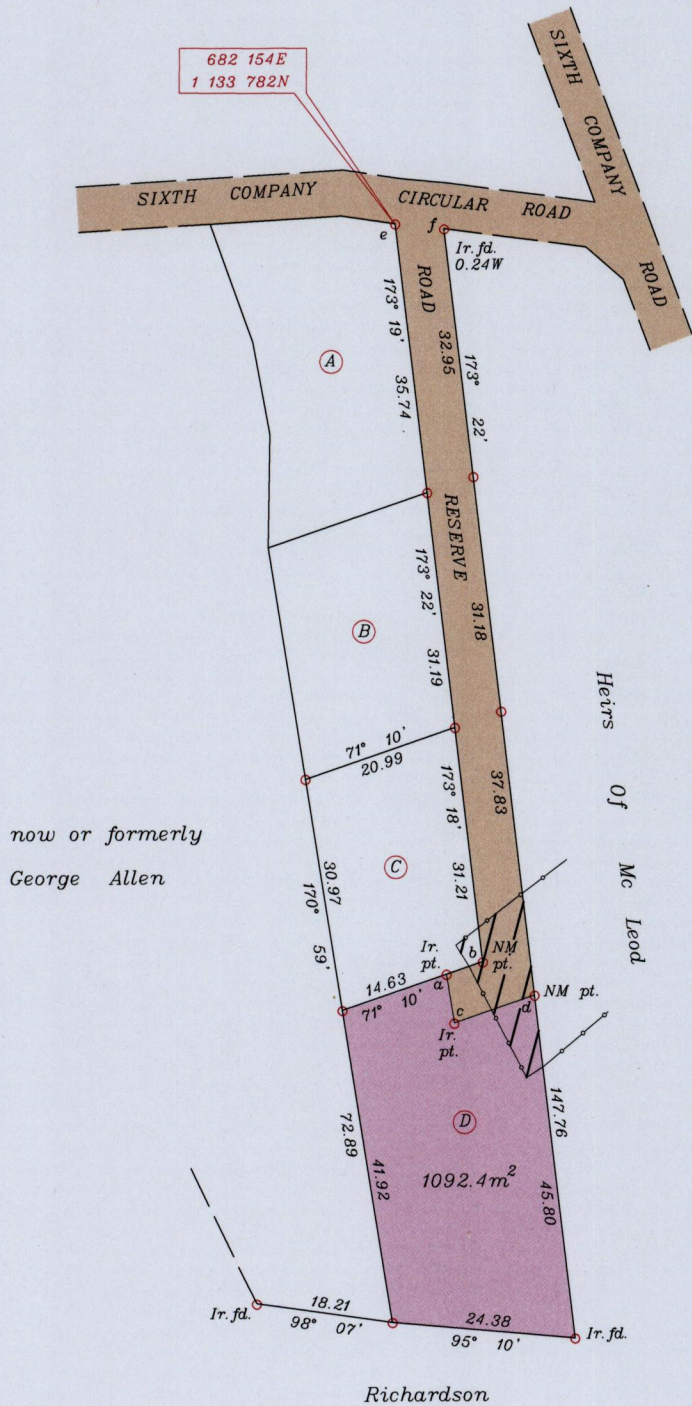


Process ID 45654

Cadastral Sheet G.5.M. 54E
Ward of Ortoire 3/d
County of Victoria

References
Bk.1176 fol.135
R.D.# 2917/67



Line	Bearing	Distance
ab	71° 10'	5.09
ac	171° 00'	6.55
cd	71° 10'	11.29
ef	96° 56'	6.53

—•—•—•— fence
 occupied by Heirs of McLeod



Co-ordinates are U.T.M. Zone 20 Naparima Datum +/-5m obtained from handheld G.P.S.

SCALE 1:1000

o denotes Ir. fd. unless otherwise stated

Bearings are Cassini Grid based on Solar Observations Distances are in metres

PLAN of a Parcel of land coloured pink in the Ward of Ortoire

Containing one thousand and ninety two point four square metres

Surveyed by me, with due authority, in October 2011 for Leslie-Ann Clifford

In accordance with Regulation 25(1) of the Land Surveyors Regulations 1998,

I certify that this plan is correct.

Checked by

Lizbeth Ann Hamilton

Entered

Trinidad & Tobago Land Surveyor November 03 2011

