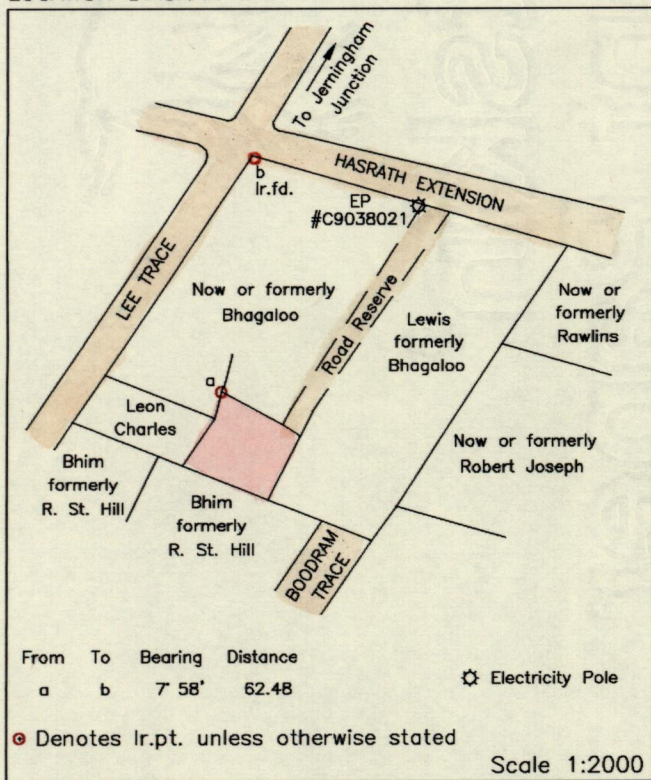
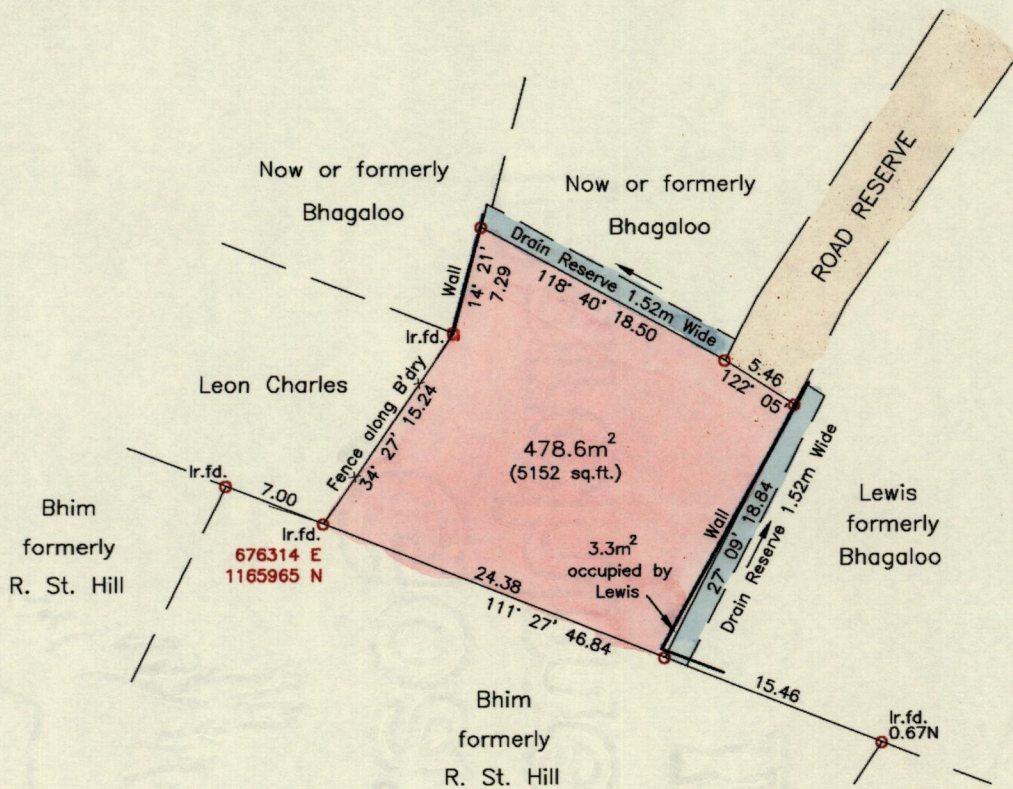
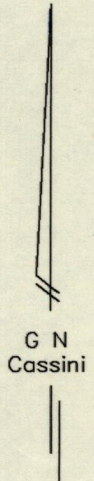


LOCATION DIAGRAM



LEE TRACE, CUNUPIA



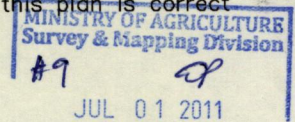
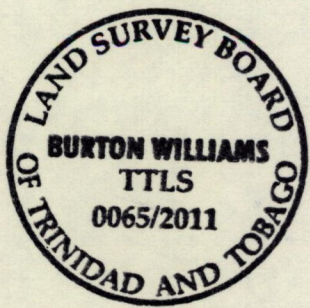
REFERENCES
 Bk.1091 Fol.145
 Bk.1093 Fol.53
 RD#14191/1975

Notes: • Denotes lr.pt. unless otherwise stated
 Bearings are Cassini Grid based on Solar Observations
 Coordinates obtained by handheld GPS (UTM Zone 20, Naparima ± 5.0m)
 Previous survey by Winston Sylvester for Ramlal Bhagaloo
 Previous survey by Ganeshdath Ramcharitar for Kadar Bhim and Shantie Bhim

SCALE 1:500
 Distances are in metres

PLAN of a parcel of land coloured pink in the Ward of Chaguanas
 Containing four hundred and seventy eight point six square metres
 Surveyed by me, with due authority, in June 2011 for Aldwyn Reece

In accordance with regulation 25(1) of the Land Surveyors Regulations 1998, I certify that this plan is correct.



Checked by
 Entered on

Burton Williams

 Trinidad and Tobago Land Surveyor,.....

LANDS & MARINE RESOURCES
 30/6/2011...