

Process JDA 44411

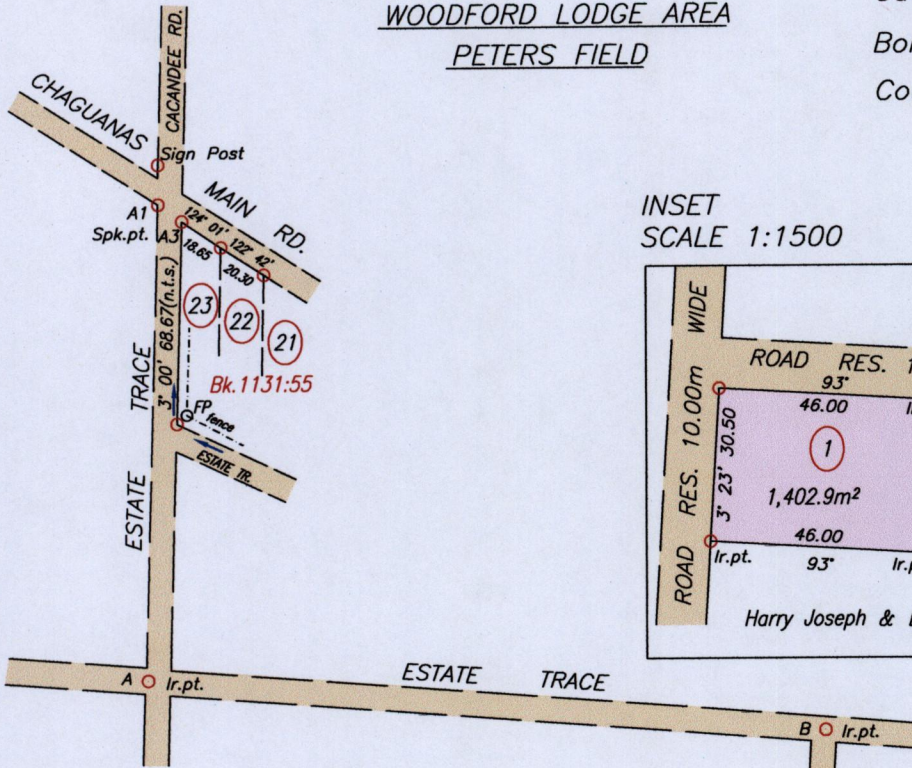
1546

33C

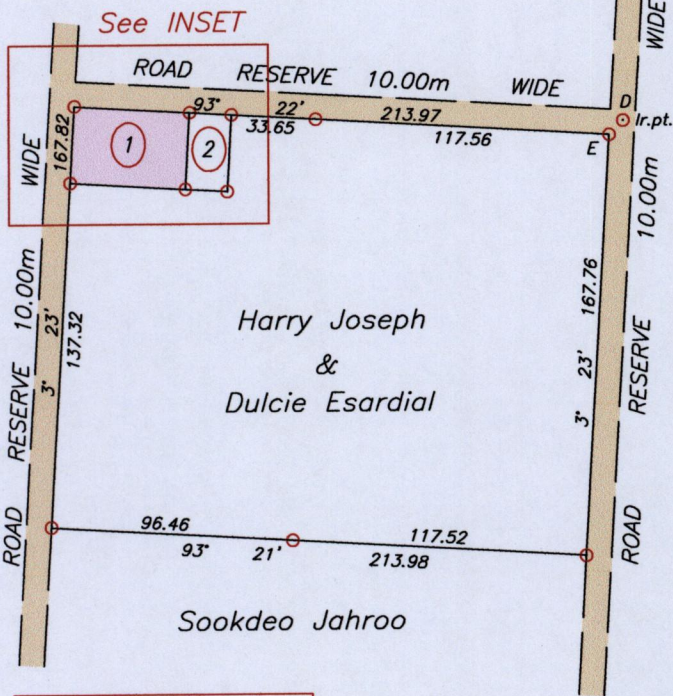
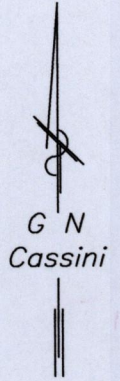
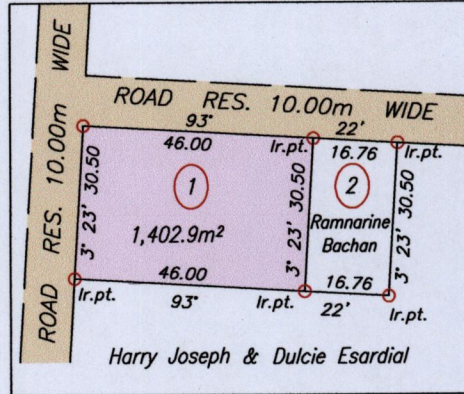
1899

WOODFORD LODGE AREA
PETERS FIELD

Cadastral Sheet 1/d (D.2.0.)
Borough of Chaguanas
County of Caroni



INSET
SCALE 1:1500



LEGEND		
A1 - Sign Post	0° 03'	15.83
A1 - A3	125° 46'	11.62
A - A1	2° 26'	211.48 (N.T.S.)
A - B	127° 28'	701.83 (N.T.S.)
B - C	183° 39'	344.11 (N.T.S.)
C - D	183° 29'	220.60 (N.T.S.)
D - E	224° 37'	7.89

A = N 1164460 +/- 4.0m
E 671108
UTM 20 WGS 84
Hand Held GPS



SCALE 1:3000
Distances are in METRES

○ Denotes Iron found unless otherwise stated
Bearings are based on Solar observations

PLAN of a Parcel of land coloured pink in the Borough of Chaguanas
Containing one thousand four hundred and two point nine square metres.
Surveyed by me, with due authority, in September 2011 for Sandra Ramkissoon

In accordance with Regulation 25 (1) of the Land Surveyors' Regulations 1998,
I certify that this Plan is correct.

Hugo Somarsingh T.T.L.S.
Trinidad & Tobago *11th October* 20.10
Land Surveyor

Entered on

