

Process IDA 44407

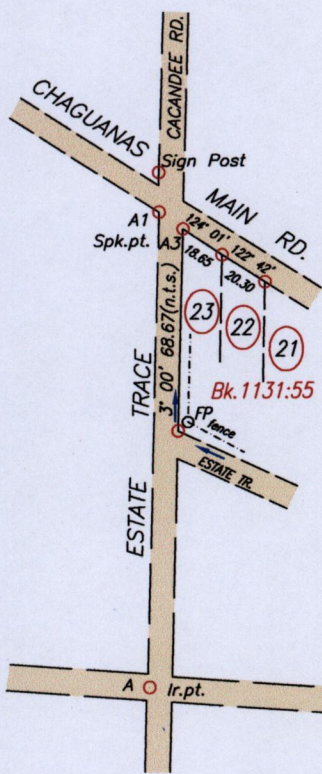
1546

33C

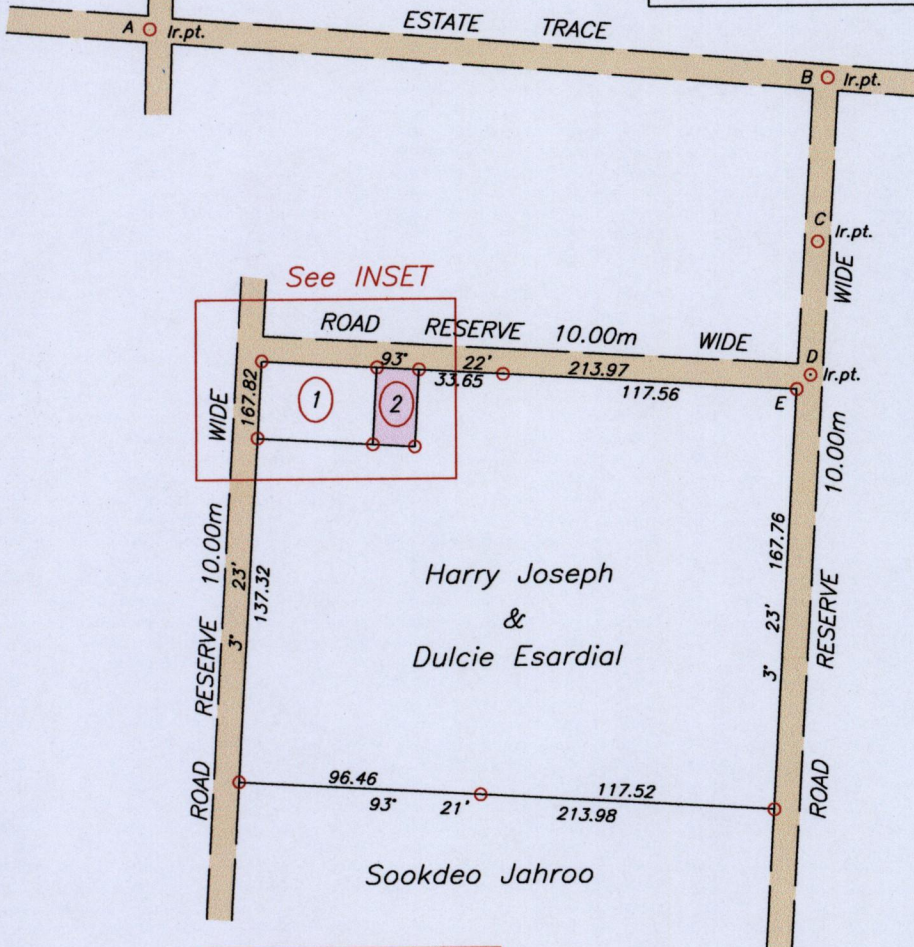
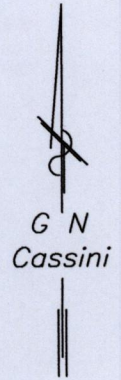
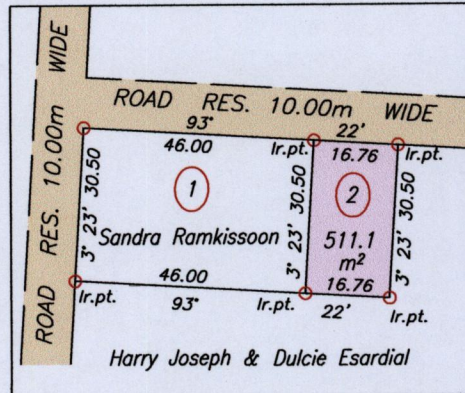
1837

WOODFORD LODGE AREA  
PETERS FIELD

Cadastral Sheet 1/d (D.2.O.)  
Borough of Chaguanas  
County of Caroni



INSET  
SCALE 1:1500



LEGEND		
A1 - Sign Post	0° 03'	15.83
A1 - A3	125° 46'	11.62
A - A1	2° 26'	211.48 (N.T.S.)
A - B	127° 28'	701.83 (N.T.S.)
B - C	183° 39'	344.11 (N.T.S.)
C - D	183° 29'	220.60 (N.T.S.)
D - E	224° 37'	7.89

A = N 1164460 +/- 4.0m  
E 671108  
UTM 20 WGS 84  
Hand Held GPS



SCALE 1:3000  
Distances are in METRES

- Denotes Iron found unless otherwise stated
- Bearings are based on Solar observations

PLAN of a Parcel of land coloured pink in the Borough of Chaguanas  
Containing five hundred and eleven point one square metres.

Surveyed by me, with due authority, in September 2011 for Ramnarine Bachan

In accordance with Regulation 25 (1) of the Land Surveyors' Regulations 1998,  
I certify that this Plan is correct.

..... *Hugo Solarshon* ..... T.T.L.S.  
 ..... *U.A. Ocloze* ..... 2011.  
 Land Surveyor

Entered on .....

