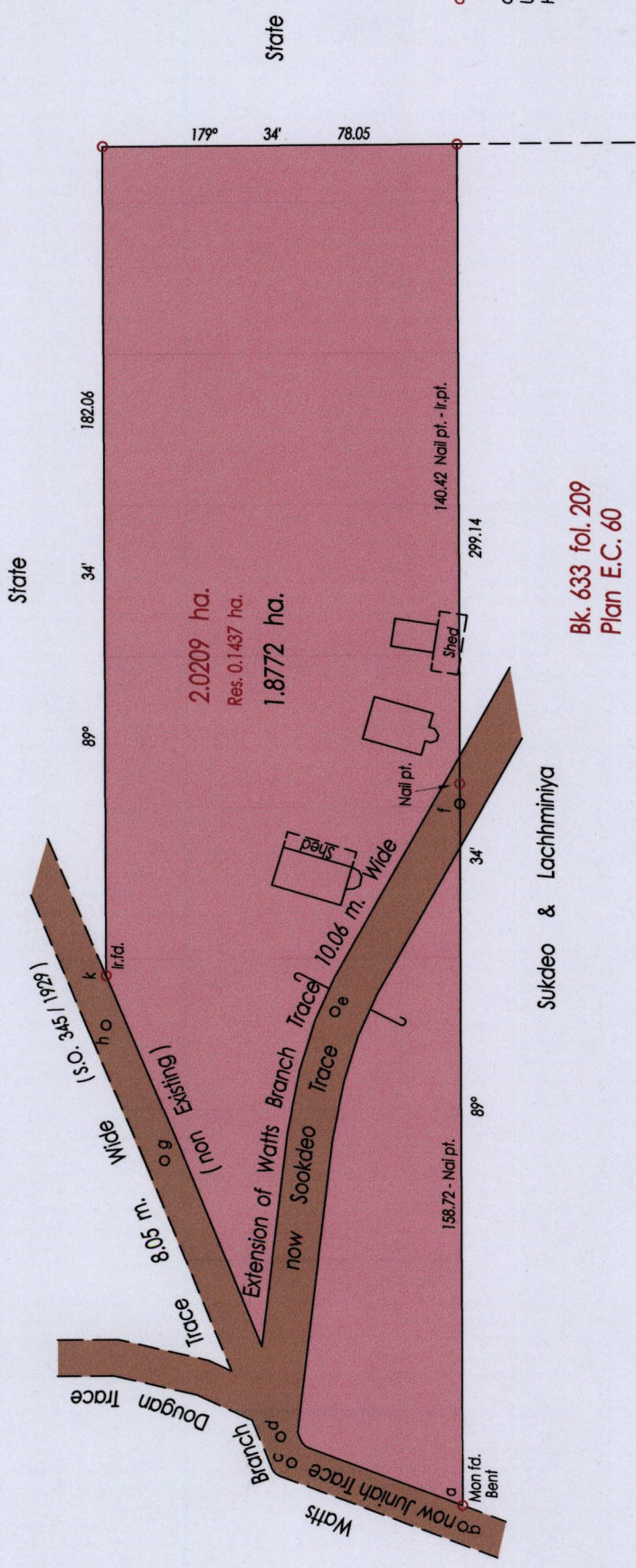


R.P.O. Vol. 689 fol. 117

Process LD#109307

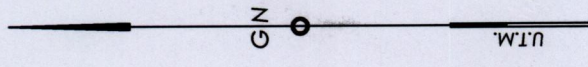
Ward of Charuma  
County of Nariva  
Cadastral Sheet D. 25. J. 55 A  
1/c



Sta.	Bearings	Dist.
a-b	269° 34'	4.63
b-c	20° 19'	40.23
c-d	67° 21'	6.25
d-e	97° 03'	94.59
e-f	120° 52'	53.20

Sta.	Bearings	Dist.
d-g	67° 24'	65.16
g-h	66° 42'	32.69
h-k	89° 37'	10.86

a-b 55° 53' 140.71  
 a=N 1141858E.691739  
 U.T.M. Zone 20 Naparima +/- 5.00 m.  
 Hand Held G.P.S.



Bk. 633 fol. 209  
 Plan E.C. 60

SCALE 1 : 1500

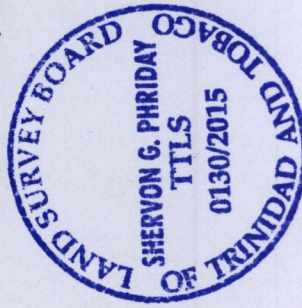
○ Denotes Iron Put Except Stated Otherwise

Bearings are U.T.M. Grid based on Solar Observations Distances are in Metres  
**PLAN of a Parcel of land coloured pink in the Ward of Charuma**  
 Containing one point eight seven seven two hectares  
 Re-defined by me, with due authority in, March 2015 at the request of Donald K. Seepersad & Deolal Seepersad  
 Certified Correct in accordance with Regulation 25 (1) of the Land Surveyors Regulation 1998.

Entered

*Shervon G. Phriday*

Trinidad & Tobago Land Surveyor ... 2015



1513

224