

R.P.O. Vol. 606 fol. 343

C. T. Vol. 4747 fol. 301

Process *SD-1029* ¹⁰⁹²⁹⁴

Ward of Charuma

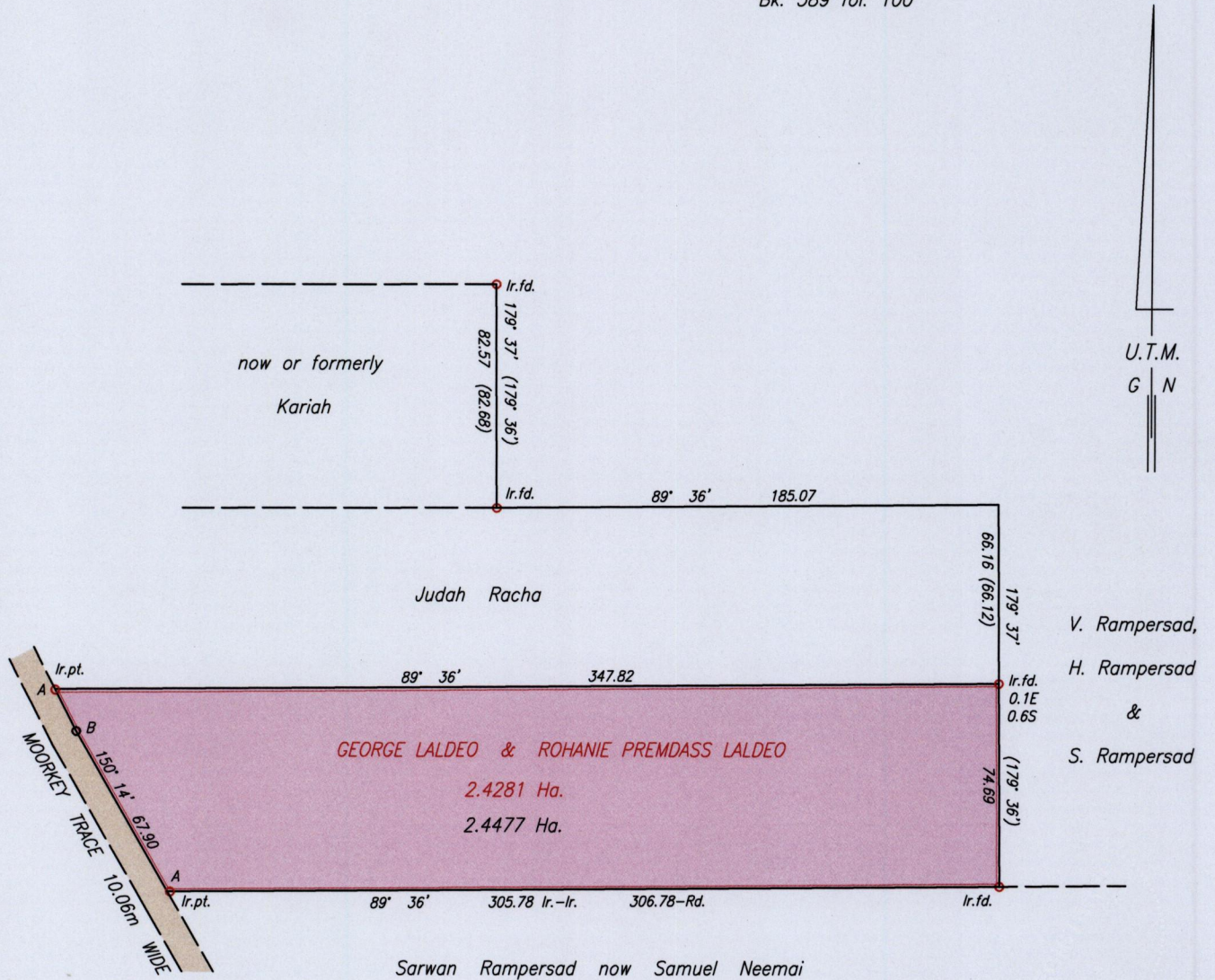
County of Nariva

Cadastral Sheet H.1.L., $\frac{55D}{2/c \ \& \ 4/a}$

TABLELAND

VIDE Bk. 589 fol. 92

Bk. 589 fol. 100



LINE	BEARING	DISTANCE
A-B	153° 10'	17.36

A : 694869mE, 1135977mN

Co-ordinates are U.T.M. Zone 20 Naparima Datum +/-7m obtained from handheld G.P.S.

SCALE 1:2500

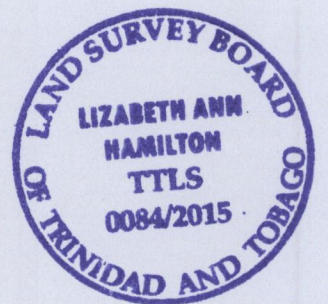
Bearings are U.T.M. Grid based on Solar Observations Distances are in metres

PLAN of a Parcel of land coloured pink in the Ward of Charuma

Containing two point four four seven seven hectares

Surveyed by me, with due authority, in April 2015 for George Laldeo

Certified Correct in accordance with Regulation 25(1) of the Land Surveyors Regulations 1998.



Checked by

Entered

Lizabell Hamilton
 May 01
 Trinidad & Tobago Land Surveyor 2015

