

R. P. O. Vol. 149 fol. 291

Ward of Siparia

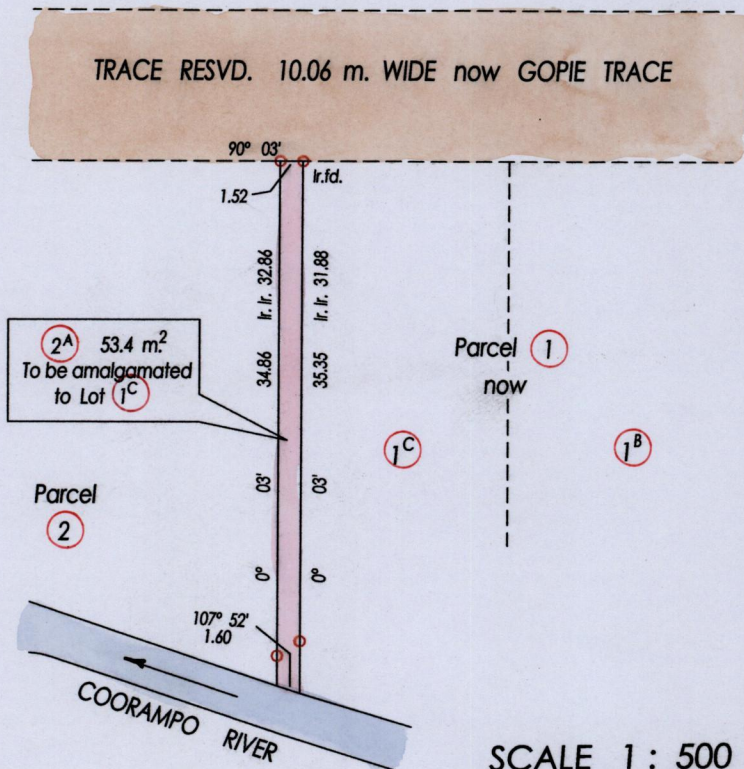
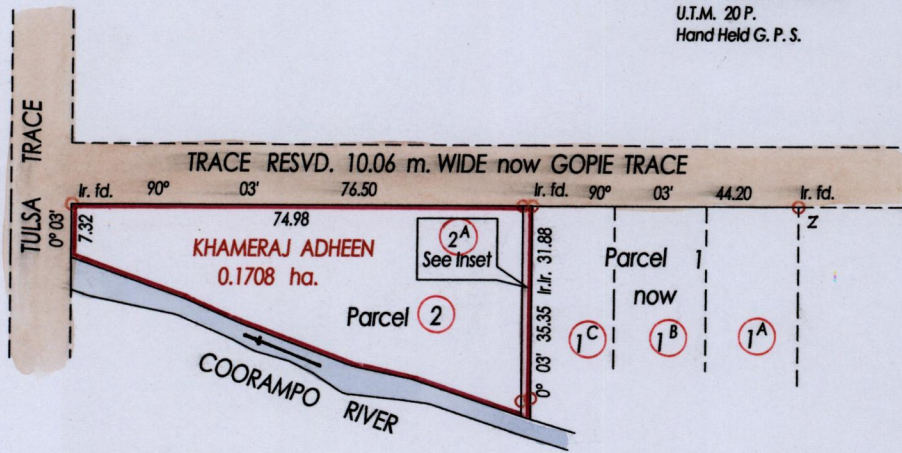
C. T. Vol. 2593 fol. 593

1500

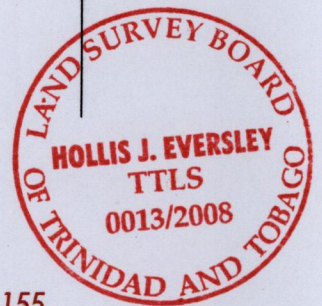
County of St. Patrick

Cadastral Sheet G. 13 E. 63 E. 2/c

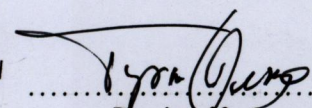
Z = N. 1125795 E. 667114  
U.T.M. 20 P.  
Hand Held G. P. S.



SCALE 1 : 500  
Distances are in Metres



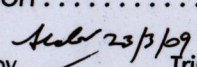
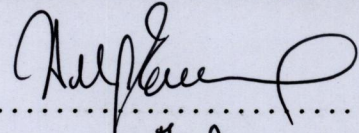
Vide Plan E H 155

Approved   
 Director of Surveys  
 2009-3-28

○ Denotes Iron Put Except Stated Otherwise

SCALE 1 : 1250

Bearings are Cassini Grid based on Solar Observations Distances are in Metres  
 PLAN of a Parcel of land coloured pink in the Ward of Siparia  
 Containing fifty three point five sq.metres  
 Surveyed by me, with due authority in, Feb. 2008  
 In accordance with Regulation 25 (1) of the Land Surveyors' Regulations 1998,  
 I certify that this plan is correct.

Entered on .....  
 Checked by  23/3/09  
 Trinidad & Tobago Land Surveyor  20<sup>th</sup> August 2008



Ministry of Agriculture  
Survey & Mapping Division  
Lands and Marine Resources



MINISTRY OF AGRICULTURE  
SURVEY & MAPPING  
DIVISION  
AUG 25 2008  
LANDS AND MARINE RESOURCES

1500/09