

U.P.R.N. No.

R.P.O Vol. 242 Fol. 279

C.T Vol. 1668 Fol. 433

BK 448 Fol. 136

**N** - N 1117, 436, E 650,362  
 UTM ZONE20, WGS84(+/- 2.00M)  
 Direct Observation-GPS hand held

Approved .....  
*[Signature]*  
 Director of Surveys  
 2009-6-18

○ Denotes Iron Put unless otherwise stated  
 Bearings are Cassini Grid based on Solar Observations  
 PLAN of two parcels of land coloured pink in the Ward of Erin  
 Containing together eight point three six two hectares  
 Surveyed by me, with due authority, in February 2004  
 In accordance with Regulation 25(1) of the Land Surveyors' Regulations 1998, I certify that this plan is correct

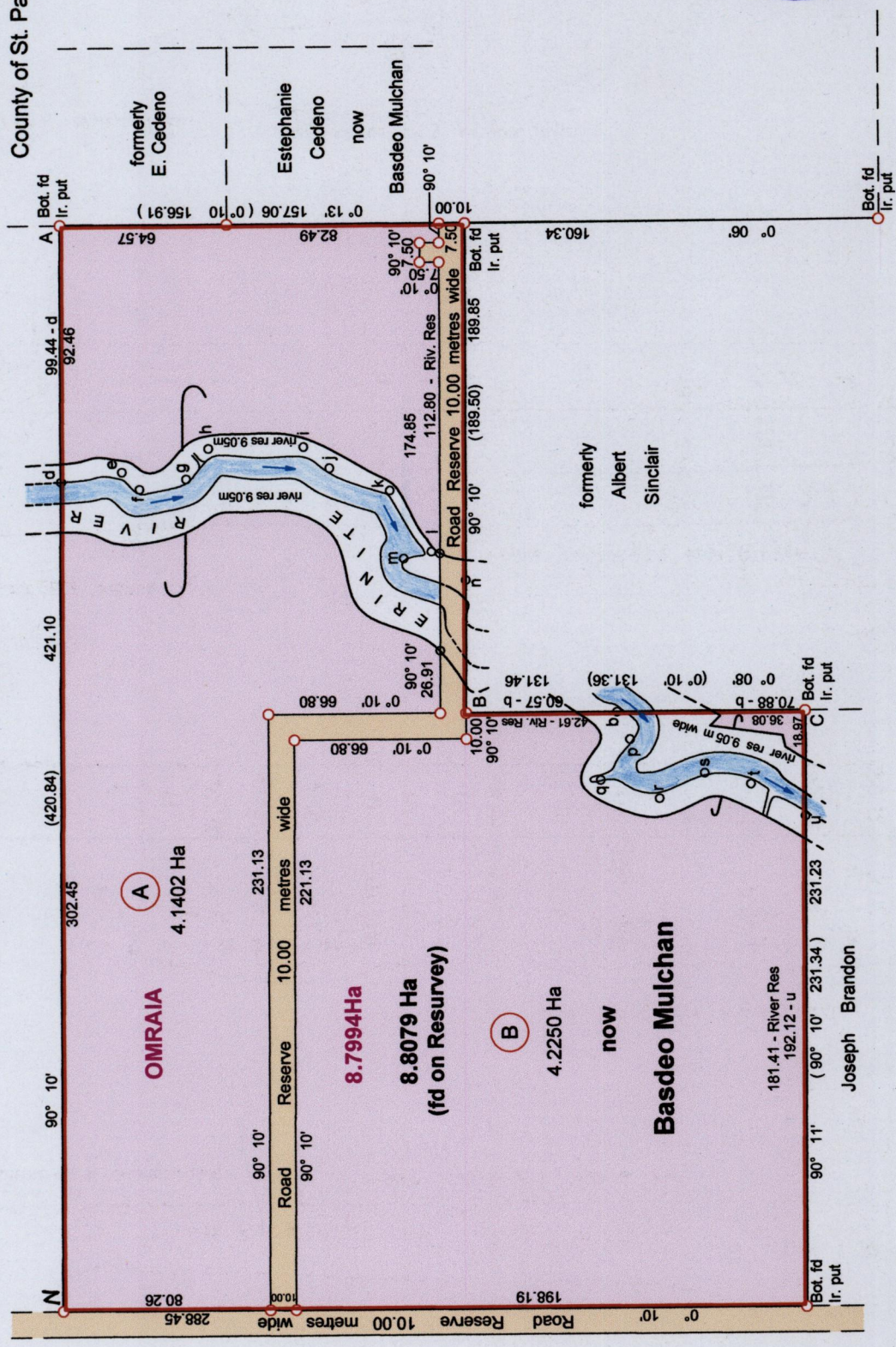
SCALE 1 : 2500  
 Distances are in Metres

See back for River notes

Entered on .....  
*[Signature]*  
 Checked by .....  
 17/6/09

Cadastral Sheet G. 20. O., 72B  
 4/c,d

Ward of Erin  
 County of St. Patrick



82

Trinidad and Tobago Land Surveyor  
 20/04/2009

509/12

