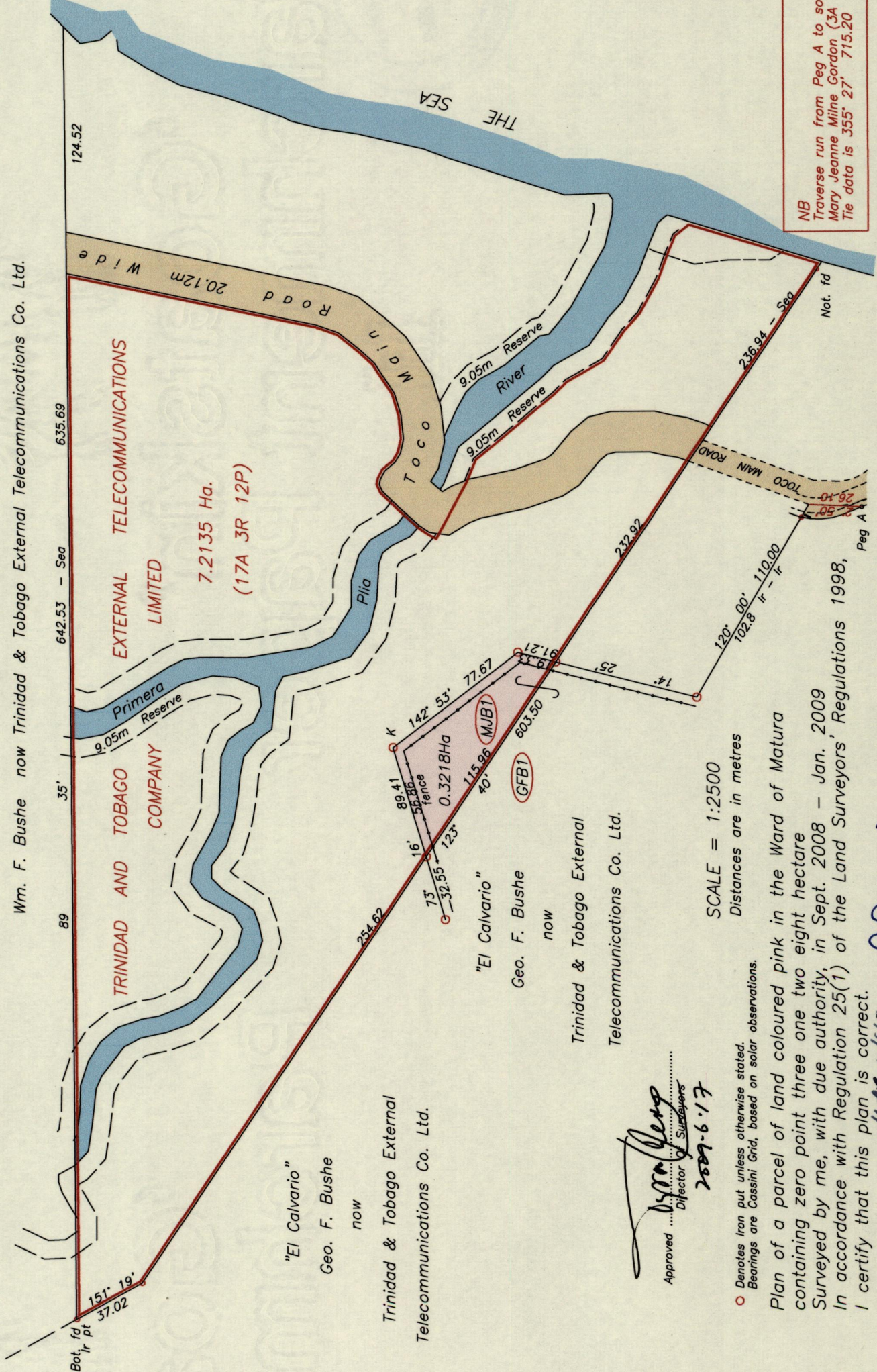


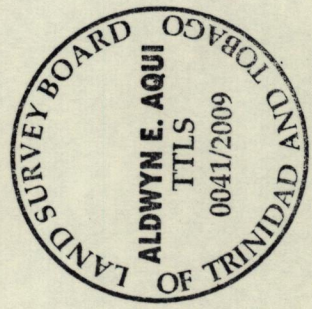
Wm. F. Bushe now Trinidad & Tobago External Telecommunications Co. Ltd.

County of St. Andrew
SALYBIA



References
Bk 140 fol 63
Bk 1002 fol 35
PE 18

Ir pt K
N = 1182871
E = 715025
= / - 3m
UTM 20 WGS 84
Hand-held GPS



NB
Traverse run from Peg A to south-west corner of parcel:
Mary Jeanne Milne Gordon (3A 1R 25P) in Bk 1002 fol 34.
The data is 355° 27' 715.20

15000

33

"El Calvario"
Geo. F. Bushe
now
Trinidad & Tobago External
Telecommunications Co. Ltd.

"El Calvario"
Geo. F. Bushe
now
Trinidad & Tobago External
Telecommunications Co. Ltd.

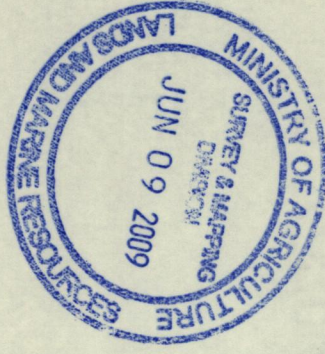
Approved
Director
2009-6-17

○ Denotes iron put unless otherwise stated.
Bearings are Cassini Grid, based on solar observations.

Plan of a parcel of land coloured pink in the Ward of Matura containing zero point three one two eight hectare Surveyed by me, with due authority, in Sept. 2008 - Jan. 2009 In accordance with Regulation 25(1) of the Land Surveyors' Regulations 1998, I certify that this plan is correct.

Checked by
Entered on
Trinidad & Tobago Land Surveyor T.T.L.S.
8.06 2009

1500/80



Original BK. 1002 fol. 35