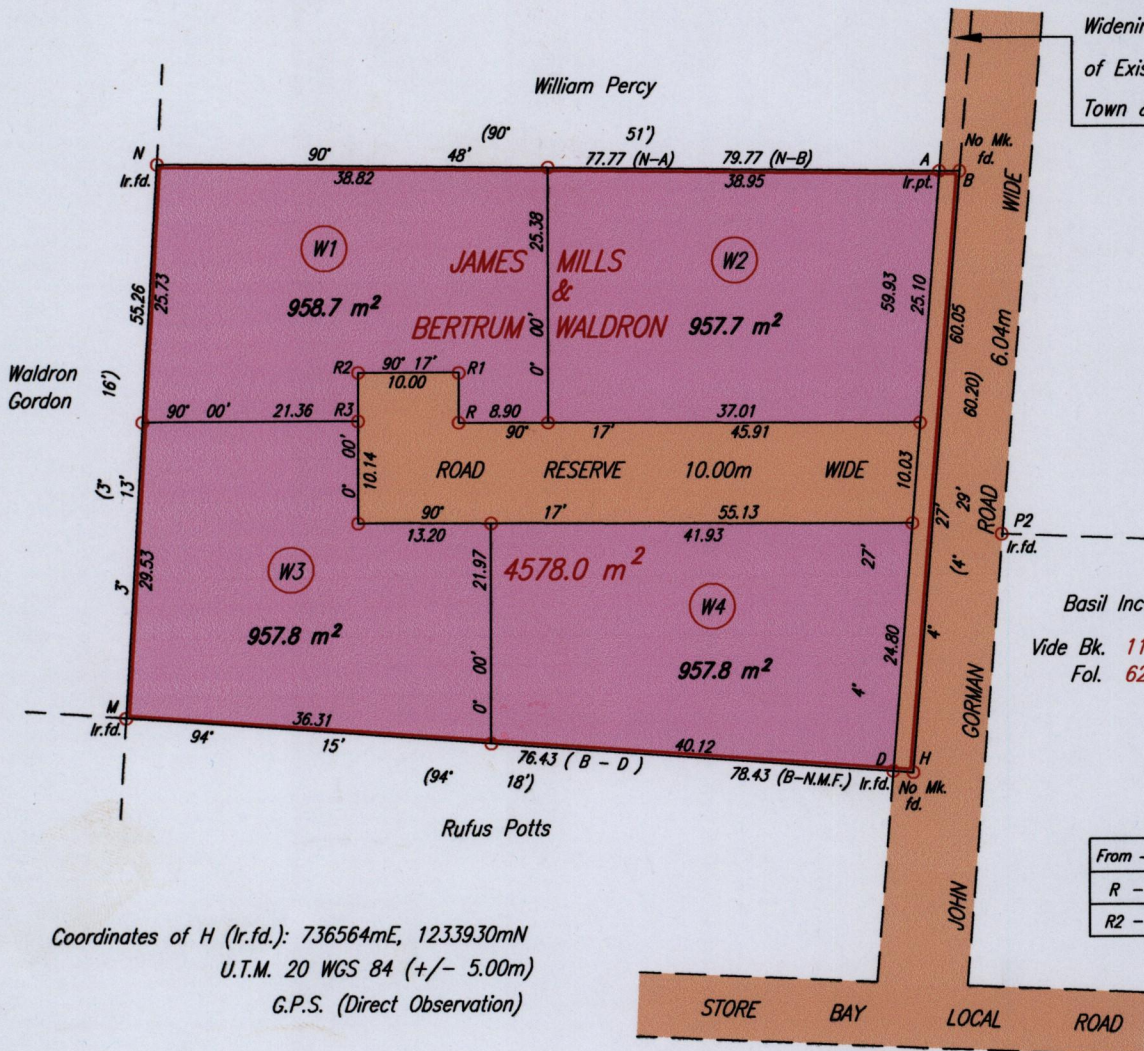


Reserve for Road is 10.04m Wide
 Widening is 2.00m on EITHER SIDE
 of Existing Road in accordance with
 Town & Country final approval



Basil Ince
 Vide Bk. 1103
 Fol. 62

From - To	Bearing	Distance
R - R1	0° 00'	5.00
R2 - R3	180° 00'	4.86

Coordinates of H (I.r.f.): 736564mE, 1233930mN
 U.T.M. 20 WGS 84 (+/- 5.00m)
 G.P.S. (Direct Observation)

See L&S Bk. 1114 Fol. 192

Approved ... *[Signature]* ...
 Director of Surveys
 2009-6-12



- Denotes Iron put except where otherwise stated
- Bearings are Cassini Grid based on Solar Observations

SCALE 1:750

Distances are in METRES

PLAN of 4 Parcels of land coloured pink in the Ward of Tobago
 Containing together three thousand eight hundred and thirty two point zero square metres
 Surveyed by me, with due authority, on the 17th of November, 2006 for Claudette Waldron
 In accordance with Regulation 25 (1) of The Land Surveyors Regulations 1998,

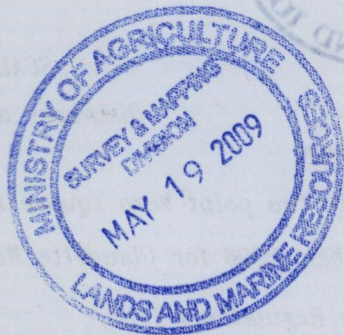
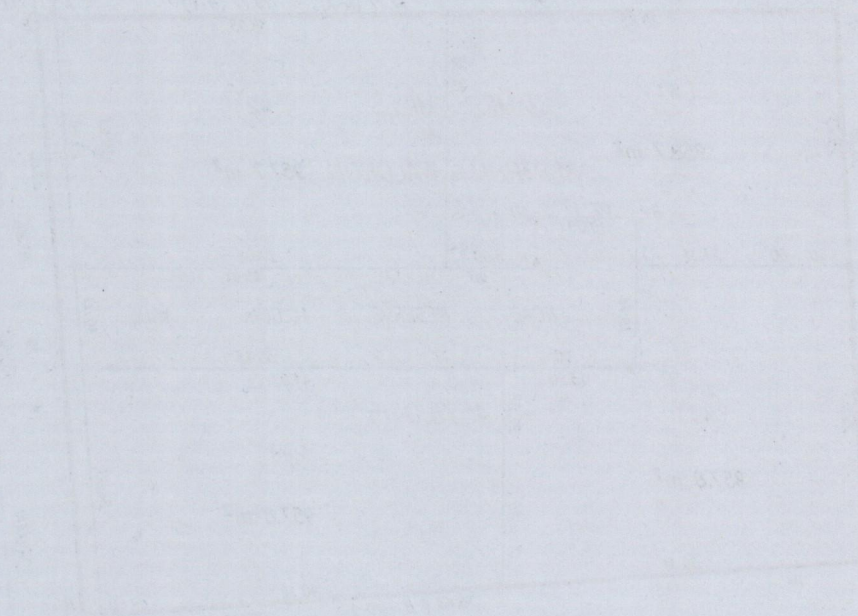
I certify that this plan is correct.

Checked by ... *[Signature]* ...

Entered on

Trinidad & Tobago Land Surveyor
 C:\LESS 2009\TOBAGO\WALDRON, CLAUDETTE-Gen\dwg. 4th March 2009
 FILE NO: TWD49

Original BK. 1114 fol. 192



1500/77