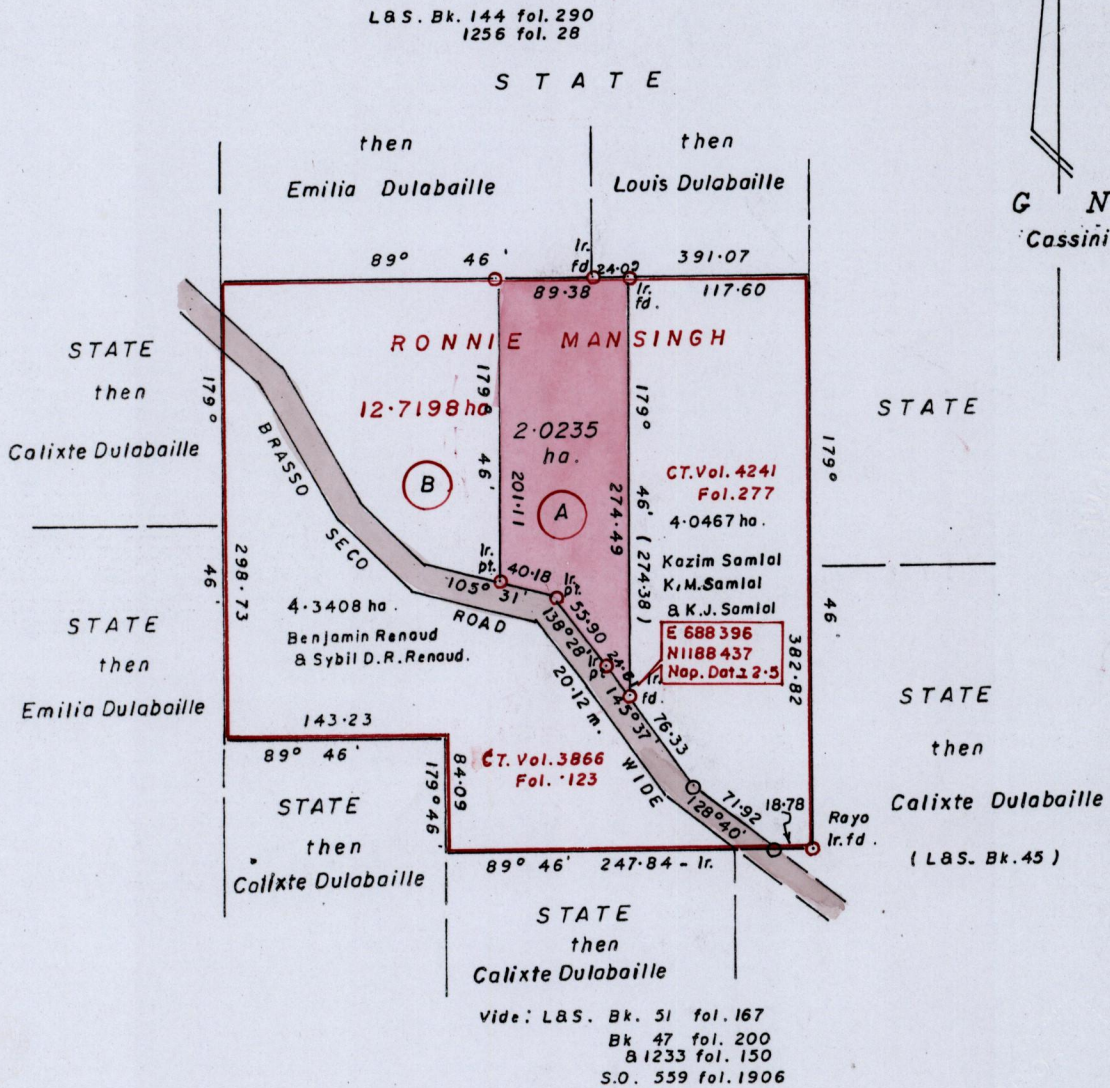


R.P.O. Vol. 180 Fol. 419
C.T. Vol. 3382 Fol. 275

15000 Ward of Blanchisseuse
County of St. George

62

Cadastral Sheet B-10-M & B-9-P.
14C
1/b82/a



Approved
[Signature]
 Director of Surveys
 2009.5.29

SCALE : 1 / 5000

Note: To obtain compass bearings add 14 minutes.

Distances are in metres

PLAN of a Parcel of land coloured pink in the Ward of Blanchisseuse
Containing two point zero two three five hectares

Surveyed by me with due authority in May 2008

In accordance with Reg. 25(1) of the Land Surveyors' Regulations 1998,

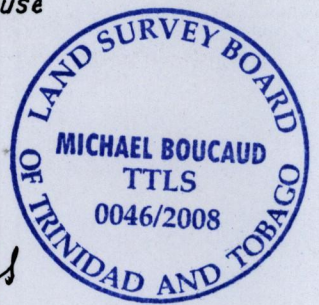
I certify that this plan is correct.

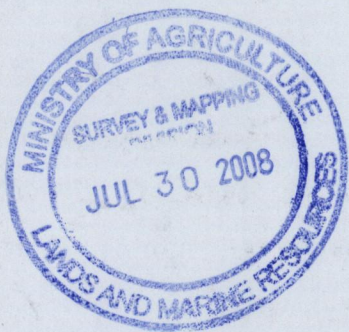
Checked by..... *[Signature]* 27/5/09

[Signature] T.T.S.

Entered.....

Trinidad & Tobago Land Surveyor..... 25th July 2008





1500/62