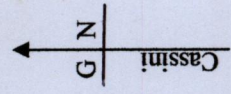
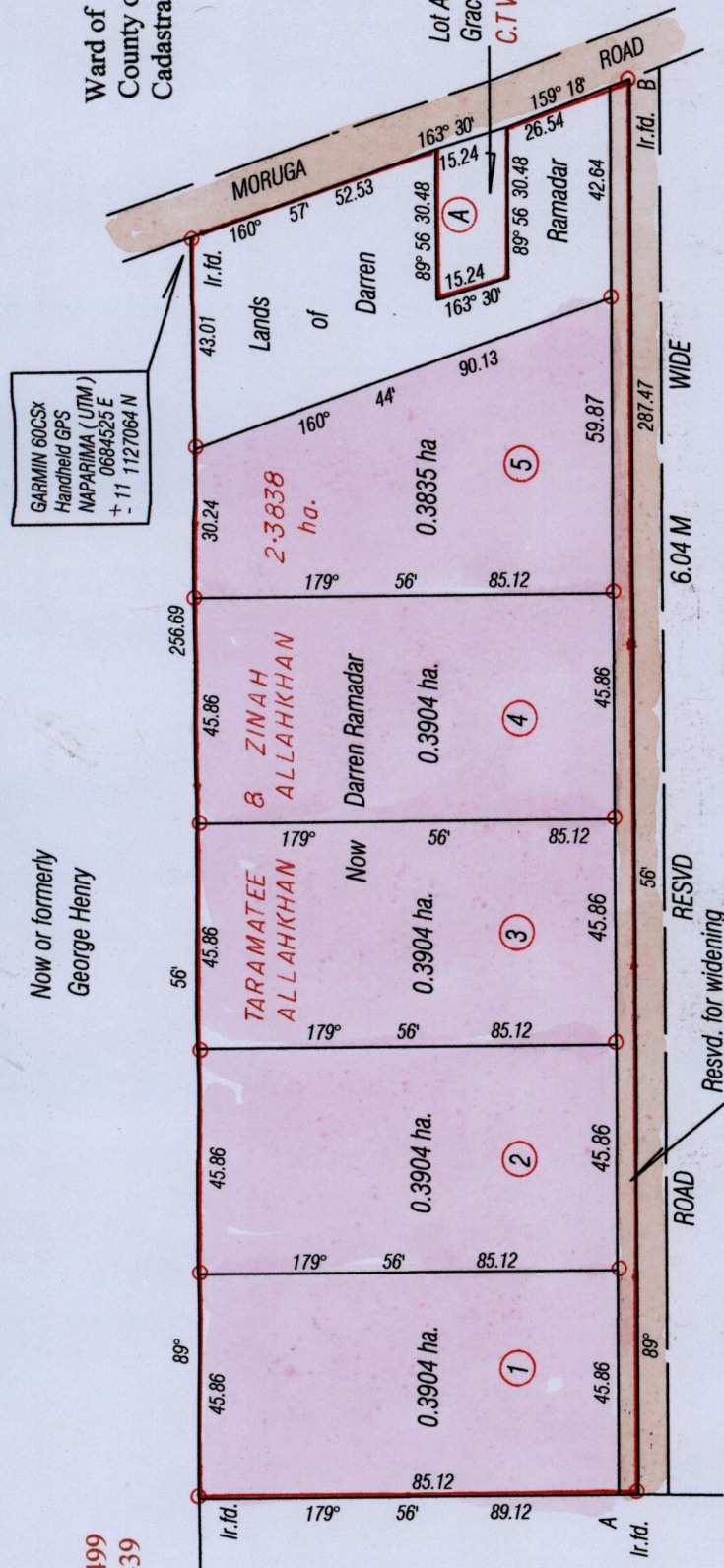


1500/48 15(1)

48



Ward of Savana Grande  
County of Victoria  
Cadastral Sheet G 15 B 64 E  
2 / b



GARMIN 60CSX  
Handheld GPS  
NAPARIMA (UTM)  
0684525 E  
+ 11 1127064 N

Now or formerly  
George Henry

R.P.O Vol. 16 Fol 499  
C.T Vol. 4881 Fol 439

Bk. 322 Fol 36

Now or formerly  
J. Mc Daniel

ROAD  
RESVD  
of Road 4.00 M  
Requested by T&C.P.D  
Ref. No. 1137 / 07

Approved...  
Director of Surveys  
2009.5.11

SCALE 1: 1500  
Distances are in metres  
PLAN of 5 Parcels of land coloured Pink in the Ward of Savana Grande  
Containing one point nine four five one hectares  
Surveyed by me, with due authority, in January 2009  
In accordance with Regulation 25 (1) of the Land Surveyors' Regulations 1998 I certify that this plan is correct.

Checked by...  
Entered .....

Winston Ramcharan  
Trinidad and Tobago Land Surveyor 17th March 2009



1500/48



*[Faint, illegible text, likely bleed-through from the reverse side of the page]*



*[Faint text, likely bleed-through from the reverse side]*

*[Faint text, likely bleed-through from the reverse side]*